


SEAL[®]

SEAL[®] 62
BASE LAMINATOR



HEAT
ASSISTED TOP ROLLER

61 INCH
WORKING WIDTH

EASY
TO USE. EASY TO SET UP.

MyBinding[™]
When Image Matters.

mybinding.com
1-800-944-4573



SEAL® 62 BASE LAMINATOR

Ideal for mounting and laminating pressure-sensitive graphics up to 61", this machine represents a flexible package at an affordable price without compromising its functionality. Designed with sturdy uni-frame construction, this laminator includes comprehensive safety system with self checking eyes and emergency stops.

TUV SUD Certified in US/Canada

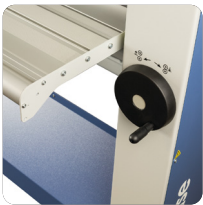
FEATURES:

Heat Assist



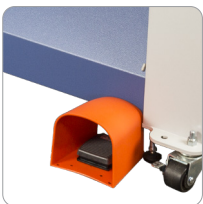
Heat assisted top roller for superb lamination performance.

Maximum Versatility



61" working width handles a wide range of media. Equipped with adjustable pressure and speed settings and a 2" nip opening to cover a wide range of substrates.

Easy to Use



Auto-grip shafts for user friendly webbing, swing-up feed table facilitates easy set up, and the foot switch provides hands free operation. Includes image guide, roll trough and leveling feet.

Laminator Type	Cold
Maximum Substrate Width	61" (1575 mm)
Maximum Laminating Speed	16.4'/min. (5 m/min.)
Foot Switch	Yes
Film Type	Pressure Sensitive
Core Diameter	3" (76 mm)
Maximum Substrate Thickness (Nip)	2" (50 mm)
Maximum Roller Temperature	104 °F (40 °C)
Roller Heating	Heat Assist Top
Temperature Control	Yes
Auto-Grip Shafts	2
Electric Requirements	115 VAC, 50/60 Hz, 15A NEMA 5-20 plug
Machine Dimensions	82"W x 52"H x 23"D (2090 mm x 1326 mm x 590 mm)
Machine Weight	530 lbs. (240 kg)
Shipping Dimensions	86"W x 61"H x 30"D (2184 mm x 1549 mm x 762 mm)
Shipping Weight	676 lbs. (307 kg)
Warranty	2 Year Limited. Extended warranty options available.

ITEM#	DESCRIPTION
Z62629	SEAL® 62 BASE LAMINATOR
Z64296	OPTIONAL REAR POWER TAKE UP FOR ROLL-TO-ROLL APPLICATIONS INCLUDING VEHICLE WRAPS AVAILABLE