

Keencut Upgrade Kit for 48" Ultimat Gold Mat Cutter - 61321

Instruction Manual



Provided by

MyBinding.com
When Image Matters.

Call Us at 1-800-944-4573

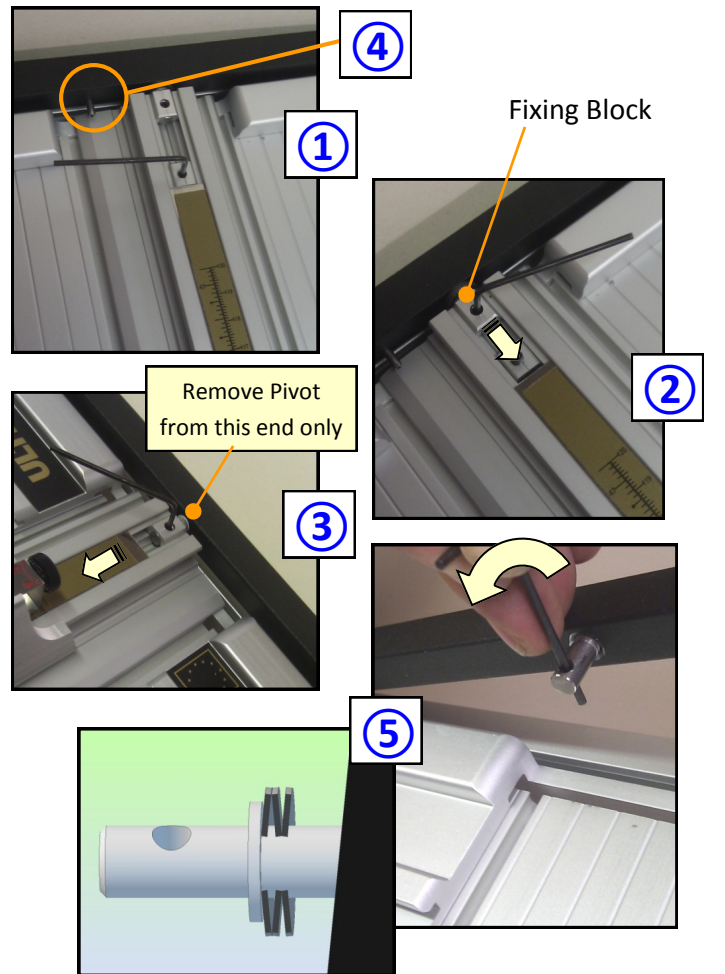
Ultimat & Ultimat Gold to Futura Upgrade

KEENCUT

The instructions below cover the installation of the Futura slideway and cutting head, operational instructions can be found on the accompanying CD.

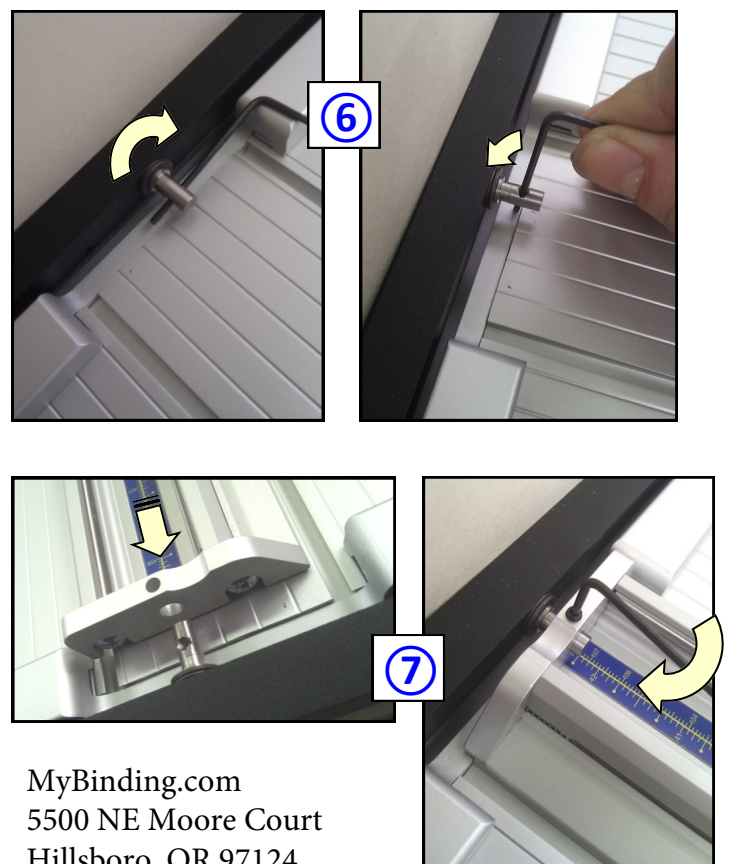
REMOVE THE ULTIMAT GOLD SLIDEWAY AND CUTTING HEAD

1. Using the 2mm Allen key supplied loosen the grub screw holding the scale stop in place at the far end of the machine.
2. Remove the grub screw from the slideway fixing block and slide the block to release slideway from the pivot.
3. Repeat at the near end of the machine after sliding the long gold scale away from the fixing block.
4. Lastly, remove the pin (circled on drawing ① and no longer required) from the arm at the far end of the machine using pliers/grips.
5. Remove the pivot from the near end of the machine only using the 2mm Allen key.
 - **ULTIMAT GOLD ONLY** – the pivot at the far end of the machine can remain in place but should it look worn or damaged a replacement is supplied with the Futura upgrade.
 - **ULTIMAT ONLY**— remove the far end pivot and replace it with the new one with the three spring washers orientated as shown.



FIT THE ULTIMAT FUTURA SLIDEWAY AND CUTTING HEAD

6. At the far end of the machine, using the 2mm Allen key, screw the pivot in as far as it will go that it flattens all the dished washers, then unscrew it the smallest amount you can so that the hole/Allen key is vertical. Be careful not to damage the threaded hole with the Allen key.
7. Position the hole in the End Block (far end of Slideway) over the pivot and insert the grub screw but do not fully tighten at this stage

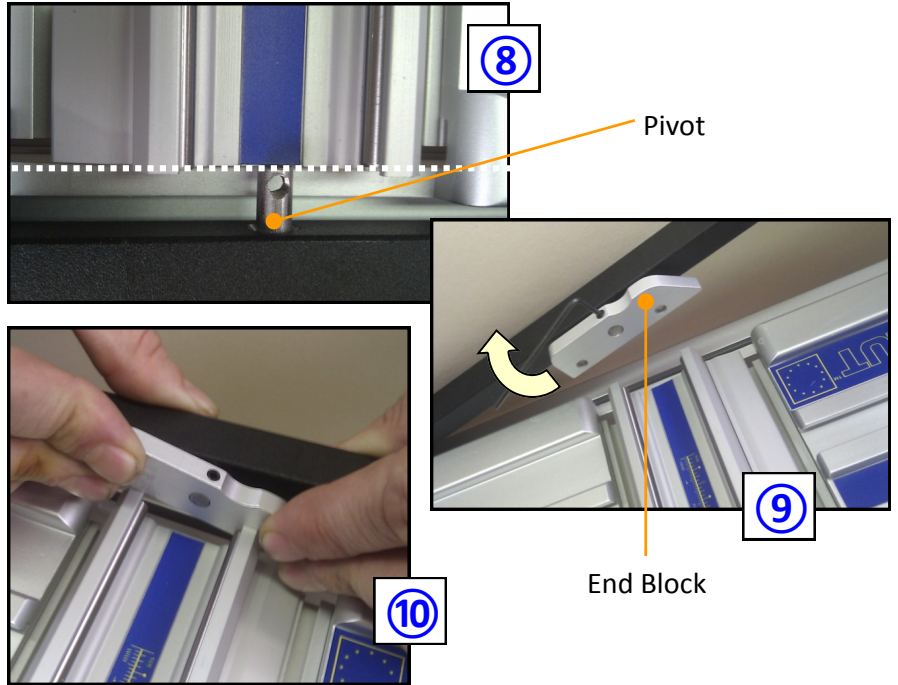


MyBinding.com
5500 NE Moore Court
Hillsboro, OR 97124
Toll Free: 1-800-944-4573
Local: 503-640-5920

Ultimat Gold to Futura Upgrade

KEENCUT

8. At the near end of the machine, screw the replacement Pivot in so that its end is in line with the end of the Slideway (shown by the dotted line).
9. Raise the Lift Arm slightly, fit the aluminium End Block onto the Pivot and secure with the grub screw but do not tighten it at this stage.
10. Pull the End Block back with both hands and lower the arm down. The End Block should be a tight fit going over the end of the Slideway, if it is not remove the End Block, unscrew the Pivot by half a turn and try again.



11. Tighten the grub screws in each End Block.
12. Position the Slideway parallel to the grooves in the base plate.
13. Lift the arm to the vertical position (a second person holding the slideway in position will help) insert the two self tapping screws and tighten fully.

Now please refer to the CD Instruction Manual, changing the Slideway should not interfere with the squareness of the machine but it should at this stage be checked as shown on page 5.1. Then check and adjust if necessary the production limit stops as shown on pages 4.3, 4.7 & 4.8.

Of particular interest may be the pages 'Know your Blades' and 'Cutting Thick Mats', a small quantity of single sided blades are enclosed should these have not been tried in the past.



MyBinding.com
5500 NE Moore Court
Hillsboro, OR 97124
Toll Free: 1-800-944-4573
Local: 503-640-5920