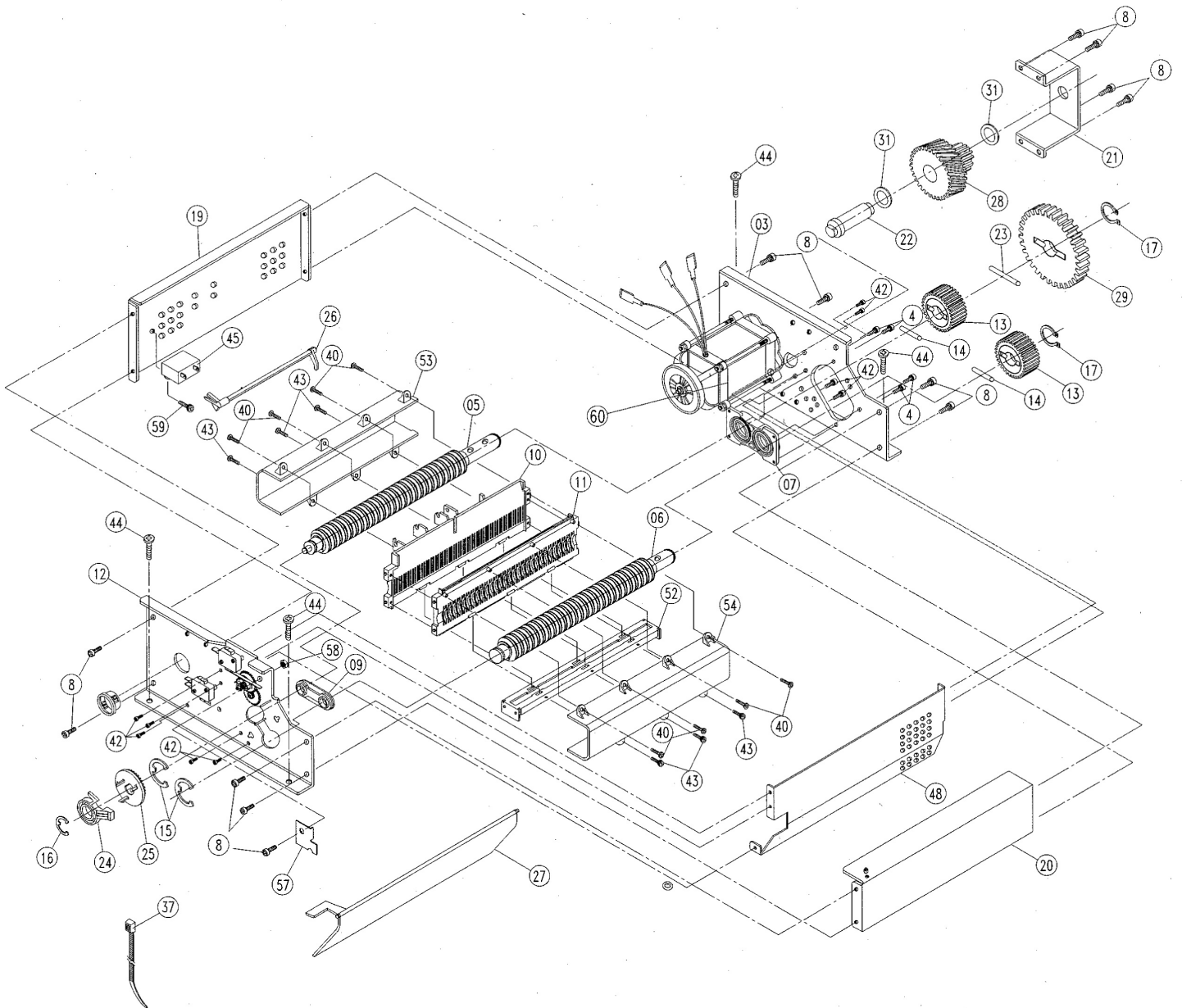
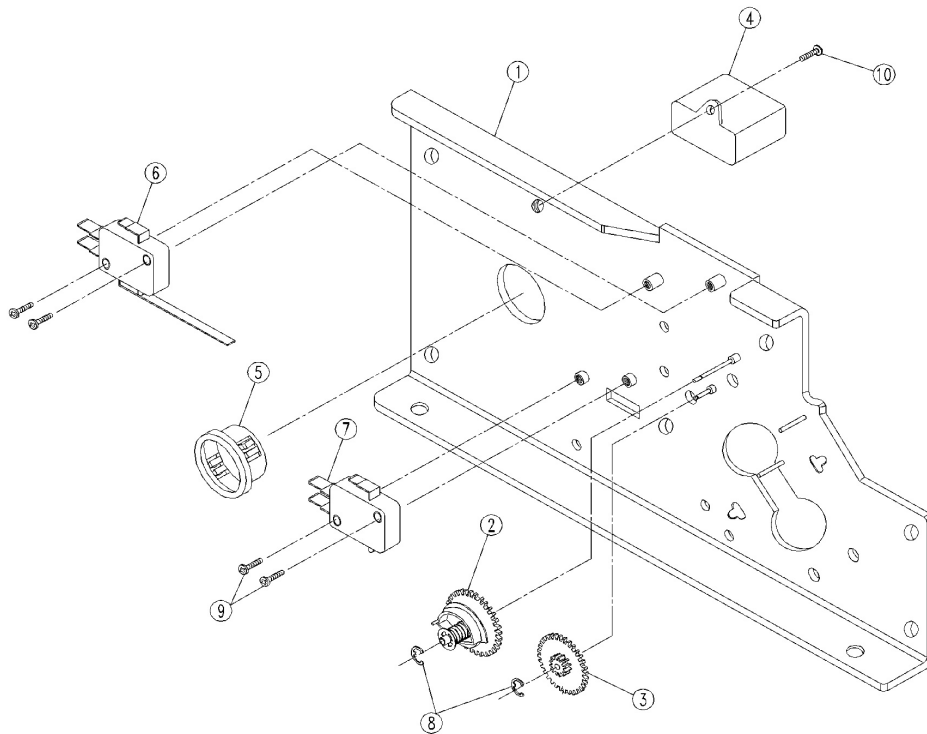


| | | | | | |
|-------------|----------------|-----------------|--------------------------|-------------|-------------|
| * | 1751726 | KL7350000A | Warning Label | 1 | 1 |
| 46 | 1751900 | XF2500000A | Name Plate | 1 | 1 |
| 44 | -REF- | S1VKF00000 | Screw 5X16 Tapping | 8 | 8 |
| 41 | -REF- | S1DJN0000F | 3X8 With Washer | 3 | 3 |
| 40 | -REF- | S1RYN00000 | Screw #3X8 Tap | 14 | 14 |
| 39 | -REF- | S1VGF0000E | Screw M4X8 P Gear Washer | 10 | 10 |
| 36 | 6202038 | ESWC02270X | Micro Switch, Door | 1 | 1 |
| 35 | 1751726 | ASYMO7421A | Fuse PCB | | 1 |
| 35 | 1751901 | ASYMO7149X | Fuse PCB | 1 | |
| 34 | 1751727 | ASYMO7148A | PCB, Control | | 1 |
| 34 | 1751717 | ASYMO7367X | PCB, Control | 1 | |
| 33 | 1751902 | XF0400000X | Strain Relief Bushing | 1 | 1 |
| 32 | 1751903 | EACC0351SA | AC Power Cord | 1 | |
| 30 | 1751904 | PW040A068A | Switch Cap | 1 | 1 |
| 18 | 1755732 | MN2800000X | Switch Fixer | 1 | 1 |
| 2 | 1751905 | PV241A18ZA | Bottom-Housing | 1 | 1 |
| 1 | 1751906 | PV230A1E1B | Housing-Top | 1 | 1 |
| ITEM | PRT NO. | REF. NO. | DESCRIPTION | 115V | 230V |



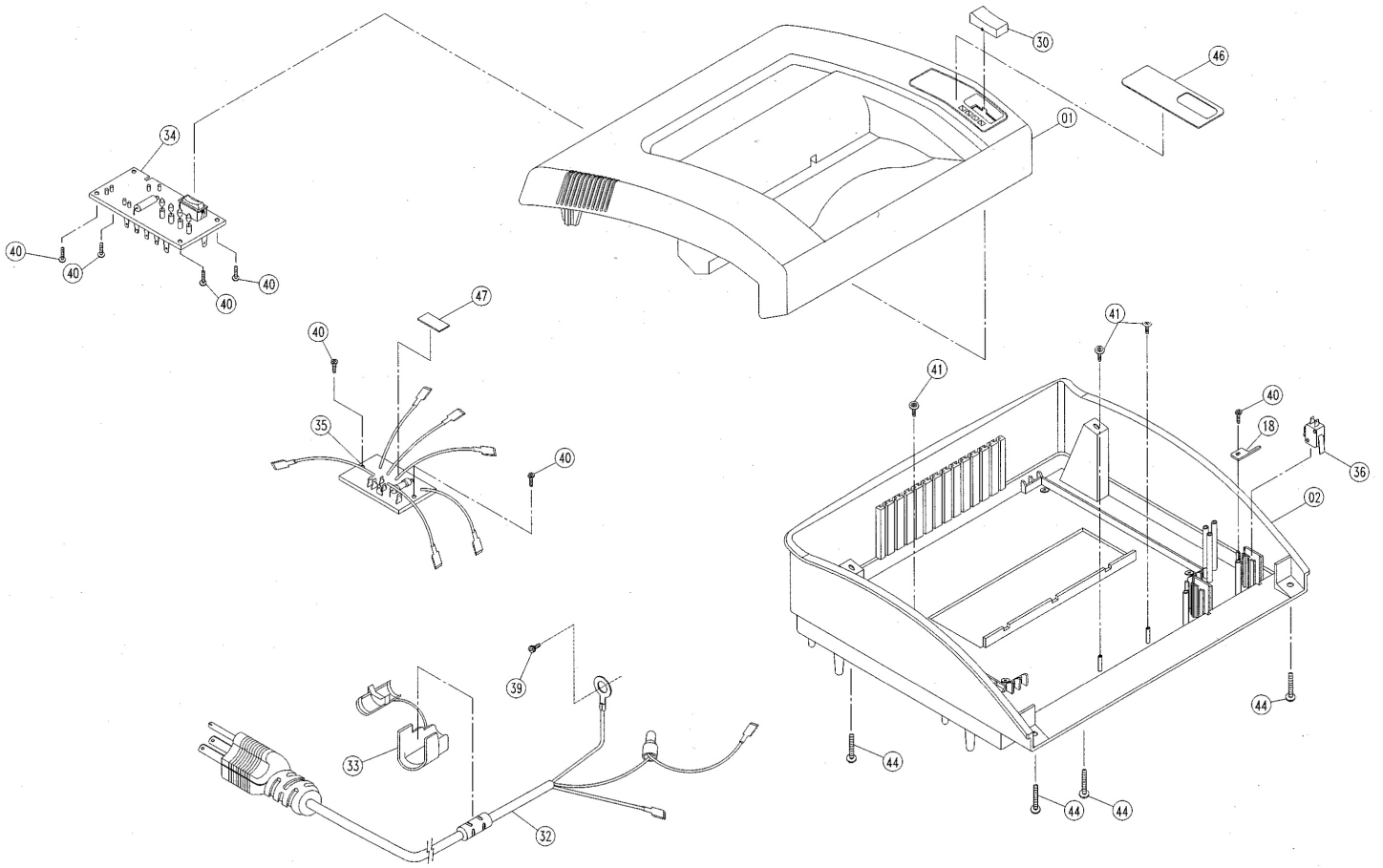
| | | | | | |
|-------------|----------------|-----------------|---------------------------|-------------|-------------|
| 60 | 1751729 | EMTR01040A | 2P AC Motor | | 1 |
| 60 | 1751718 | EMTR01010X | 2P AC Motor | 1 | |
| 59 | 1755721 | S1W4F0000E | Screw M4x10 P Gear Washer | 1 | 1 |
| 58 | 1755734 | MO140F000X | Nut M 5x4t | 1 | 1 |
| 57 | 1755733 | MO1300000X | Trigger Holder | 1 | 1 |
| 54 | 1751926 | PW240XXXXX | Knife Cover-Front | 1 | 1 |
| 53 | 1751925 | PW250XXXXX | Knife Cover-Rear | 1 | 1 |
| 52 | 1751924 | ML6300000X | Paper Guide-Bracket | 1 | 1 |
| 48 | 1755731 | MN1500000X | Motor Shield | 1 | 1 |
| 45 | 1751728 | ECAP606600 | Capacitor 9uf/400VAC | | 1 |
| 45 | 1751923 | ECAP60310X | Capacitor 30uf/250VAC | 1 | |
| 43 | -REF- | S1VHF0000E | Screw M3X8 P Gear Washer | 6 | 6 |
| 42 | 1755741 | S7SLB0000S | Screw M3x8 Spring Washer | 9 | 4 |
| 37 | -REF- | EOTH02210X | Cable Tie | 5 | 5 |
| 31 | -REF- | XJ6900000X | Spacer 12.2 T=0.5 | 2 | 2 |
| 29 | 1751938 | PV860D7XXX | Spur Gear 50T | 2 | 2 |
| 28 | 1751766 | PV850H5XXX | Gear -A 53T+11T | 1 | 1 |
| 27 | 1751922 | PV300XXXXX | Flap | 1 | 1 |
| 26 | 1751716 | PV290XXXXX | Auto Parts | 1 | 1 |
| 25 | 6180021 | PH820HOXXX | Auto Gear 32T | 1 | 1 |
| 24 | 1755737 | PARS0XXXXX | Rev Cam | 1 | 1 |
| 23 | 1750713 | MM0600000X | Knife Shaft Pin 6x40mm | 1 | 1 |
| 22 | 1751920 | ML6500000X | Gear Shaft | 1 | 1 |
| 21 | 1751919 | ML6200000X | Gear Holder | 1 | 1 |
| 20 | 1751918 | ML6100000X | Plate-D | 1 | 1 |
| 19 | 1751917 | ML5000000X | Plate-C | 1 | 1 |
| 17 | -REF- | MC5000000X | #15 C-Ring | 2 | 2 |
| 16 | -REF- | MC4700000X | #5 E-Ring | 1 | 1 |
| 15 | -REF- | MC4600000X | #12 E-Ring | 2 | 2 |
| 14 | 1751915 | MC3400000X | Knife Pin | 2 | 2 |
| 13 | 6180029 | MC1000000X | Spur Gear-A 20T | 1 | 1 |
| 12 | 1755728 | ML7200000C | Plate-A | 1 | 1 |
| 11 | 1751913 | PV260XXXXX | Paper Guide - Front | 1 | 1 |
| 10 | 1751912 | PV250XXXXX | Paper Guide - Rear | 1 | 1 |
| 9 | 1755735 | MP2800000X | Bushing | 1 | 1 |
| 8 | 1755738 | S7SJB0000S | Screw M5x10 Spring Washer | 13 | 13 |
| 7 | 1755722 | ASYM05832A | Bearing Assy | 1 | 1 |
| 6 | 1755726 | ASYP08385X | 4mm Knife Shaft (B) Assy | 1 | 1 |
| 5 | 1755725 | ASYP08384X | 4mm Knife Shaft (A) Assy | 1 | 1 |
| 4 | 1755739 | S7SKB0000S | Screw M4x8 Spring Washer | 4 | 4 |
| 3 | 1755729 | ML7300000C | Plate-B | 1 | 1 |
| ITEM | PRT NO. | REF. NO. | DESCRIPTION | 115V | 230V |



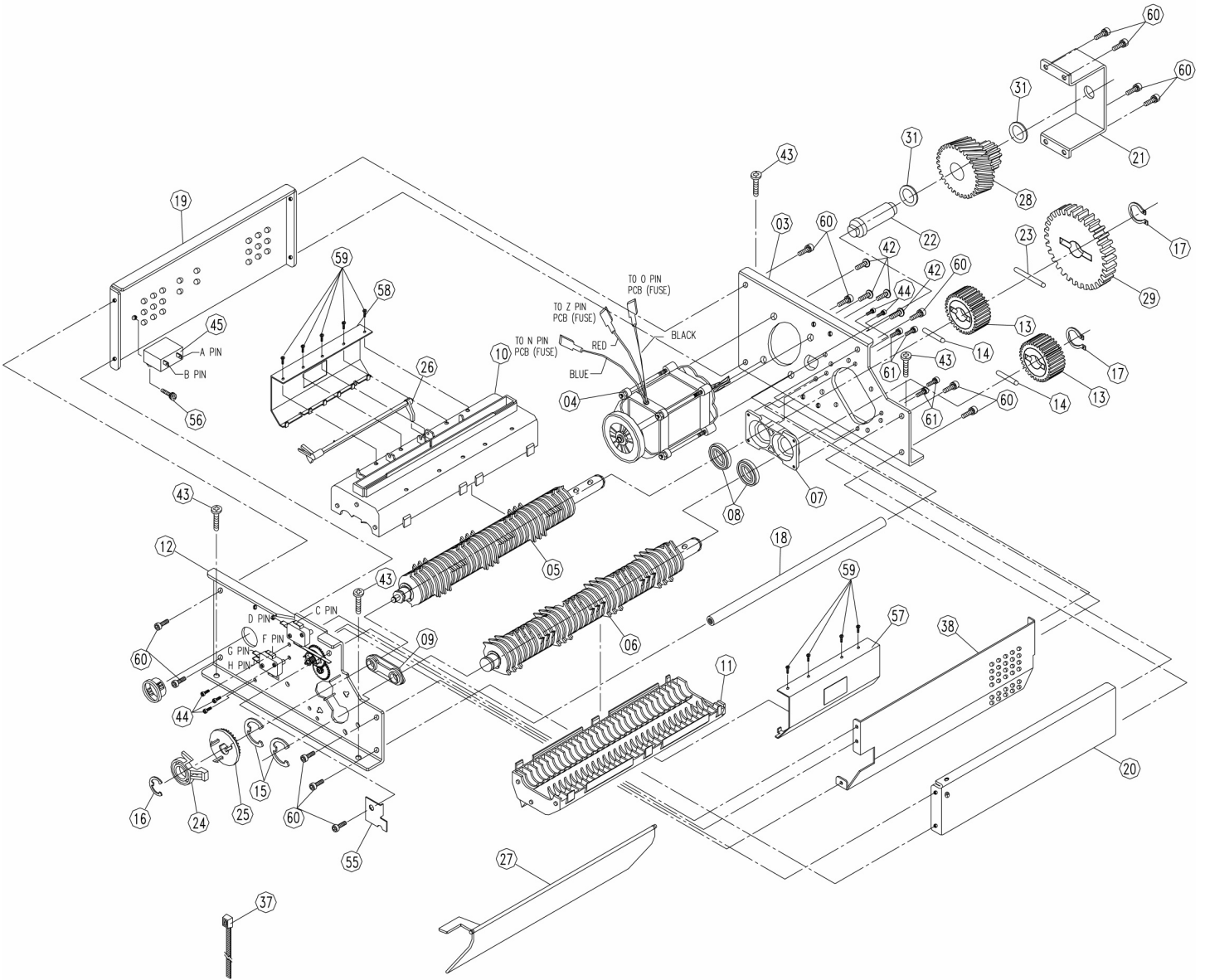
| | | | | | |
|-------------|----------------|-----------------|-------------------------|-------------|-------------|
| 10 | -REF- | S1VGF0000X | Screw M4X8P Gear Washer | 1 | 1 |
| 9 | -REF- | S1CFNOOOOX | M3 X 14 | 2 | 2 |
| 8 | -REF- | MA8400000X | #1.5 E-Ring | 2 | 2 |
| 7 | 1751930 | ESWCO2280X | Micro Switch | 1 | 1 |
| 6 | 1750294 | ESWC03000X | Trigger Switch | 1 | 1 |
| 5 | 1751929 | XF1400000X | Snap Bushings | 1 | 1 |
| 4 | 1751728 | ECAP606600 | Capacitor 9uF/250VAC | | 1 |
| 4 | 1751923 | ECAP60310X | Capacitor 30uF/250VAC | 1 | |
| 3 | 1750308 | PC370HOXXX | Gear (A) | 1 | 1 |
| 2 | 1755724 | ASYMO8395A | Auto Cam Ass'y | 1 | 1 |
| 1 | 1755728 | ML7200000C | Plate-A | 1 | 1 |
| ITEM | PRT NO. | REF. NO. | DESCRIPTION | 115V | 230V |

2250X

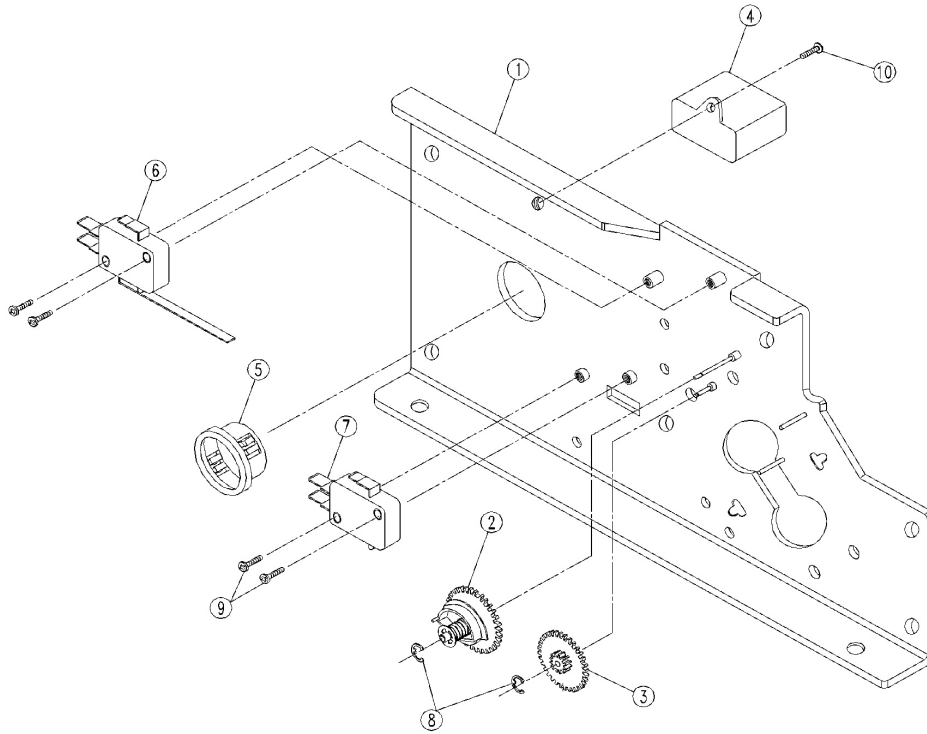
PARTS LIST



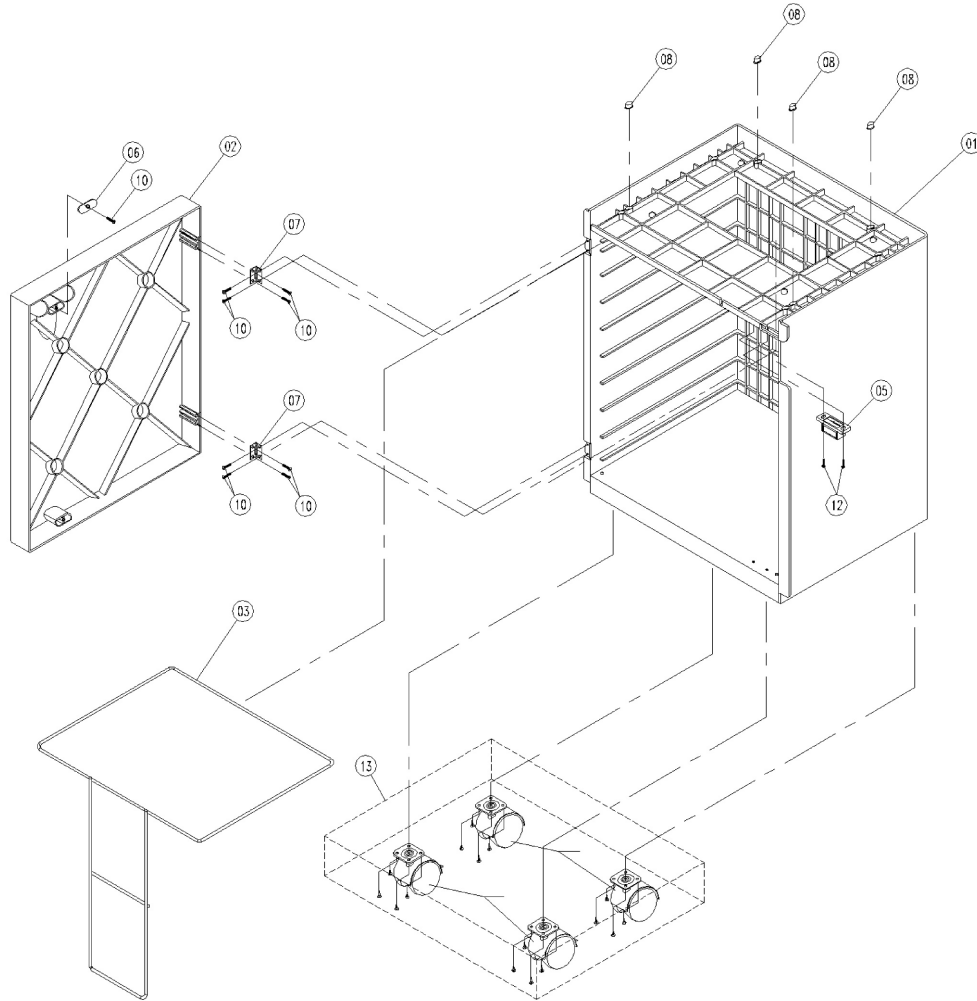
| | | | | | |
|-------------|----------------|-----------------|--------------------------|-------------|-------------|
| * | 1751726 | KL7350000A | Warning Label | 1 | 1 |
| 46 | 1751931 | XF2501000X | Name Plate | 1 | 1 |
| 44 | -REF- | S7SLB0000S | Screw M3X8 Spring Washer | 5 | 5 |
| 43 | -REF- | S1VKF00000 | Screw 5X16 Tapping | 8 | 8 |
| 41 | -REF- | S1DJN0000F | 3X8 With Washer | 3 | 3 |
| 40 | -REF- | S1RYN00000 | Screw #3X8 Tap | 7 | 7 |
| 39 | -REF- | S1VGF0000E | Screw M4X8 P Gear Washer | 1 | 1 |
| 36 | 6202038 | ESWC02270X | Micro Switch, Door | 1 | 1 |
| 35 | 1751726 | ASYMO7421A | Fuse PCB | | 1 |
| 35 | 1751901 | ASYMO7149X | Fuse PCB | 1 | |
| 34 | 1751727 | ASYMO7148A | PCB, Control | | 1 |
| 34 | 1751717 | ASYMO7367X | PCB, Control | 1 | |
| 33 | 1751902 | XF0400000X | Strain Relief Bushing | | 1 |
| 32 | 1751704 | ASYMO7430B | AC Power Cord | 1 | |
| 30 | 1751904 | PW040A068A | Switch Cap | 1 | 1 |
| 18 | 1755732 | MN2800000X | Switch Fixer | 1 | 1 |
| 2 | 1751932 | PV240XXXXX | Bottom-Housing | 1 | 1 |
| 1 | 1751906 | PV230A1E1B | Housing-Top | 1 | 1 |
| ITEM | PRT NO. | REF. NO. | DESCRIPTION | 115V | 230V |



| | | | | | |
|-------------|----------------|-----------------|---------------------------|-------------|-------------|
| 60 | -REF- | S75JB0000S | Screw M5X10 Spring Washer | 14 | 14 |
| 59 | -REF- | S1RYN00000 | Screw #3X8 Tap | 9 | 9 |
| 58 | 1751775 | MP7510000X | Holder-Rear | 1 | 1 |
| 57 | 1751774 | MP7500000X | Holder-Front | 1 | 1 |
| 55 | 1755733 | MO130F000X | Trigger Holder | 1 | 1 |
| 45 | 1751736 | ECAP606700 | Capacitor 7.5uf/400VAC | | 1 |
| 45 | 1751947 | ECAP60700X | Capacitor 20uf/250VAC | 1 | |
| 43 | -REF- | S1VKF00000 | Screw #5X16 B Tapping | 8 | 8 |
| 42 | -REF- | S1VFF0000E | Screw #5X10 B Gear Washer | 4 | 4 |
| 31 | -REF- | XJ6900000X | Spacer 12.2 t = 0.3 | 2 | 2 |
| 29 | 1751938 | PV880D7XXX | Spur Gear 50T | 1 | 1 |
| 28 | 1751766 | PV870H5XXX | Gear -A 53T+11T | 1 | 1 |
| 27 | 1751922 | PV300XXXXX | Flap | 1 | 1 |
| 26 | 1751716 | PV290XXXXX | Auto Parts | 1 | 1 |
| 25 | 6180021 | PH820HOXXX | Auto Gear 32T | 1 | 1 |
| 24 | 1751764 | PARS0XXXXX | Rev Cam | 1 | 1 |
| 23 | 1750713 | MM0600000X | Knife Shaft Pin 6X40mm | 1 | 1 |
| 22 | 1751920 | ML6500000X | Gear Shaft | 1 | 1 |
| 21 | 1751919 | ML6200000X | Gear Holder | 1 | 1 |
| 20 | 1751918 | ML6100000X | Plate-D | 1 | 1 |
| 19 | 1751917 | ML5000000X | Plate-C | 1 | 1 |
| 18 | 1751916 | MIA4800000X | Side Plate Support | 1 | 1 |
| 17 | -REF- | MC5000000X | #15 C-Ring | 2 | 2 |
| 16 | -REF- | MC4700000X | #5 E-Ring | 1 | 1 |
| 15 | -REF- | MC4600000X | #12 E-Ring | 2 | 2 |
| 14 | 1751915 | MC3400000X | Shaft Pin | 2 | 2 |
| 13 | 6180029 | MC1000000X | Spur Gear-A 20T | 2 | 2 |
| 12 | 1751939 | ASYMO5833X | Plate-A Ass'y | 1 | 1 |
| 11 | 1751937 | PV280XXXXX | Paper Guide - Bottom | 1 | 1 |
| 10 | 1751936 | PV270XXXXX | Paper Guide - Top | 1 | 1 |
| 9 | 1751765 | MP2800000X | Bushing | 1 | 1 |
| 8 | 1751911 | MM0900000X | Bearing 6002 | 2 | 2 |
| 7 | 1751910 | ML6600000X | Bearing Holder | 1 | 1 |
| 5 | 1751768 | ASMY08387X | Cross Cutter (B) Assy | 1 | 1 |
| 5 | 1751769 | ASYMO8386X | Cross Cutter (A) Assy | 1 | 1 |
| 4 | 1751737 | EMTR01030A | 2P AC Motor | | 1 |
| 4 | 1751767 | EMTR00990X | 2P AC Motor | 1 | |
| 3 | 1751738 | ASYMO7044A | Plate-B | | 1 |
| 3 | 1751933 | ML7400000X | Plate-B | 1 | |
| ITEM | PRT NO. | REF. NO. | DESCRIPTION | 115V | 230V |



| | | | | | |
|-------------|----------------|-----------------|---------------------------|-------------|-------------|
| 10 | -REF- | S1W4F0000E | Screw M4X10 P Gear Washer | 1 | 1 |
| 9 | -REF- | S1CFNOOOOX | M3 X 14 | 2 | 2 |
| 8 | -REF- | MA8400000X | #1.5 E-Ring | 2 | 2 |
| 7 | 1751930 | ESWCO2280X | Micro Switch | 1 | 1 |
| 6 | 1750294 | ESWC03000X | Trigger Switch | 1 | 1 |
| 5 | 1751929 | XF1400000X | Snap Bushings | 1 | 1 |
| 4 | 1751736 | ECAP606700 | Capacitor 7.5uF/400VAC | | 1 |
| 4 | 1751947 | ECAP60700X | Capacitor 20uF/250VAC | 1 | |
| 3 | 1750308 | PC370HOXXX | Gear (A) | 1 | 1 |
| 2 | 1751928 | ASYMO2755X | Auto Cam Ass'y | 1 | 1 |
| 1 | 1755728 | ML7200000C | Plate-A | 1 | 1 |
| ITEM | PRT NO. | REF. NO. | DESCRIPTION | 115V | 230V |



| | | | | QTY | |
|-------------|----------------|-----------------|----------------------------|-------------|-------------|
| 13 | 1751707 | ASYP07137A | Castor Set | 1 | 1 |
| 12 | -REF- | S1VJN0000X | Screw 3X12 Washer Tapping | 2 | 2 |
| * | -REF- | S1VIF0000X | Screw M4X14 | 4 | 4 |
| 10 | -REF- | S1VDB0000X | Screw #3X12 Type P F Black | 9 | 9 |
| 8 | 1751946 | XF1100000A | Cushion | 4 | 4 |
| 7 | 1751945 | MH1300000A | Hinge | 2 | 2 |
| 6 | 1751944 | MM1000000A | Magnet Plate | 2 | 2 |
| 5 | 1751943 | XF1500000A | Magnet | 2 | 2 |
| * | 1751942 | MN210Z000A | Support Bar | 2 | 2 |
| 3 | 1751706 | ML640L900A | Bag Rim | 1 | 1 |
| 2 | 1751941 | PV830JOE1A | Door | 1 | 1 |
| 1 | 1751940 | ASYM05835A | Cabinet Ass'y | 1 | 1 |
| ITEM | PRT NO. | REF. NO. | DESCRIPTION | 115V | 230V |

* Not shown

2230S-1

| | | | | |
|----------------|-----------------|-------------------------|-------------|-------------|
| 1751926 | PW240XXXXX | Knife Cover-Front | 1 | 1 |
| 1751925 | PW250XXXXX | Knife Cover-Rear | 1 | 1 |
| 1751913 | PV260XXXXX | Paper Guide - Front | 1 | 1 |
| 1751912 | PV250XXXXX | Paper Guide - Rear | 1 | 1 |
| 6180029 | MC1000000X | Spur Gear-A 20T | 2 | 2 |
| 1751706 | ML640L900A | Bag Rim | 1 | 1 |
| 1751707 | ASYP07137A | Castor Set | 1 | 1 |
| 1751708 | PV860D7XXX | Spur Gear 45T (2230S) | 1 | 1 |
| 1751709 | PV850H5XXX | Gear -A 47T+13T (2230S) | 2 | 2 |
| 1751716 | PV290XXXXX | Auto Parts | 1 | 1 |
| 1751727 | ASYMO7148A | PCB, Control | | 1 |
| 1751717 | ASYMO7367X | PCB, Control | 1 | |
| 1751729 | EMTR01040A | 2P AC Motor (2230S) | | 1 |
| 1751718 | EMTR01010X | 2P AC Motor (2230S) | 1 | |
| 1751930 | ESWCO2280X | Micro Switch | 1 | 1 |
| 1750294 | ESWC03000X | Trigger Switch | 1 | 1 |
| PRT NO. | REF. NO. | DESCRIPTION | 115V | 230V |

2250X

| | | | | |
|----------------|-----------------|-------------------------|-------------|-------------|
| 1751937 | PV280XXXXX | Paper Guide - Bottom | 1 | 1 |
| 1751936 | PV270XXXXX | Paper Guide - Top | 1 | 1 |
| 1751768 | ASMY08387X | Cross Cutter (B) Assy | 1 | 1 |
| 1751769 | ASYMO8386X | Cross Cutter (A) Assy | 1 | 1 |
| 6180029 | MC1000000X | Spur Gear 20T | 2 | 2 |
| 1751706 | ML640L900A | Bag Rim | 1 | 1 |
| 1751707 | ASYP07137A | Castor Set | 1 | 1 |
| 1751938 | PV880D7XXX | Spur Gear 50T (2250X) | 1 | 1 |
| 1751766 | PV870H5XXX | Gear -A 53T+11T (2250X) | 2 | 2 |
| 1751716 | PV290XXXXX | Auto Parts | 1 | 1 |
| 1751727 | ASYMO7148A | PCB, Control | | 1 |
| 1751717 | ASYMO7367X | PCB, Control | 1 | |
| 1751737 | EMTR01030A | 2P AC Motor (2250X) | | 1 |
| 1751767 | EMTR00990X | 2P AC Motor (2250X) | 1 | |
| 1751930 | ESWCO2280X | Micro Switch | 1 | 1 |
| 1750294 | ESWC03000X | Trigger Switch | 1 | 1 |
| PRT NO. | REF. NO. | DESCRIPTION | 115V | 230V |

Cross-Cut and Straight-Cut office shredders must be periodically lubricated for optimum performance. A good indicator when to lubricate the cutters is when a decrease in sheet capacity is noticed. Following the steps below will help to restore sheet capacity and will keep your shredder in top working order.

WARNING

GBC® recommends only Shredmaster lubricant which is non-flammable, non-aerosol and biodegradable. The use of other lubricants, aerosols or pump sprays, may be a fire or combustion hazard due to the solvent content, atomization, or the propellant.



LUBRICATION PROCEDURE



Method A

1. Turn the shredder off.
2. Liberally apply the lubricant directly into the shredder throat area from side to side.
3. Turn the shredder on and shred a few sheets of paper.
4. Reverse the shredder momentarily to help distribute the lubricant throughout the cutters.

Method B

1. Pour a steady stream of lubricant across scrap sheets of paper.
2. Turn shredder on, shred the lubricated sheets.
3. When shredding is complete, reverse the shredder to help distribute the lubricant throughout the cutters.

Your shredder is ready for use!

GBC® Shredmaster Synthetic lubricant (part# 1760049) is available in sixteen ounce bottles through **GBC®** National Service or your local **GBC®** Shredmaster dealer. To phone in your order please call:
U.S.: 800.790.7787
Canada: 800.463.2545