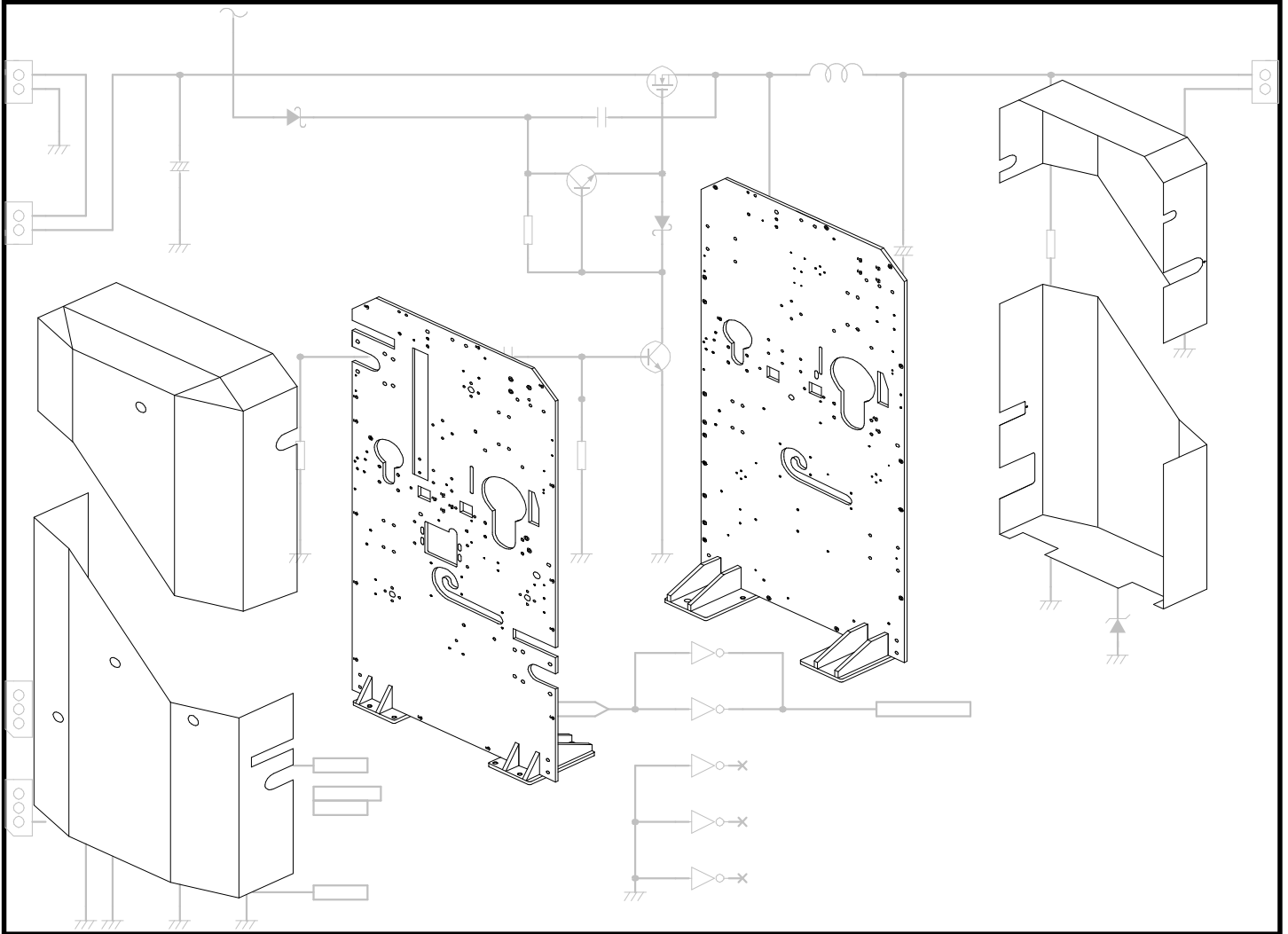


GBC ORCA 64

ILLUSTRATED PARTS

AND SCHEMATICS BOOK



Illustrated Parts

Electrical Schematics

ILLUSTRATED PARTS

		Page
O64 - 001	Frame Assembly	5
O64 - 002	Rewinder Assembly	6
O64 - 003	Rollers & Sensor Assembly	7
O64 - 004	Front & Rear Table Assembly	8
O64 - 005	Chain Linking Assembly	9
O64 - 006	Main Roller Lift Assembly	10
O64 - 007	Pull Roller Lift Assembly	11
O64 - 008	Safety Shield Assembly	12
O64 - 009	Control Panel Assembly	13
O64 - 010	Power Panel Assembly	14
O64 - 011	Heater Assembly	15
O64 - 012	Film Guide Assembly	16
O64 - 013	Upper & Lower Idler Assembly	17
O64 - 014	Clutch Assembly	18
O64 - 015	Rewinder Sprocket Assembly	19
O64 - 016	Unwind Assembly	20
O64 - 017	Micronex Brake Assembly	21
O64 - 018	In-Line Slitter Assembly	22
O64 - 019	Solenoid Valve Assembly	23
O64 - 020	Chill Idler Assembly	24
O64 - 021	Cabinet & Cover Assembly	25
O64 - 022	Rear Slitter Assembly	26
O64 - 023	Separator Bar Assembly	27

ELECTRICAL SCHEMATICS

O64 - 024	Orca 64 Wire Diagram	28
O64 - 025	DC Power Supply Circuit	29
O64 - 026	Main Motor Drive Circuit	30
O64 - 027	Main MCU Control Circuit	31
O64 - 028	Display Panel Circuit	32
O64 - 029	Safety Relay Board Circuit	33
O64 - 030	Sensor Interface Circuit	34
O64 - 031	Roller Tension Control Circuit	35
O64 - 032	Cooling Fan Driver Circuit	36
O64 - 033	Cavuum Fan Drive Circuit	37

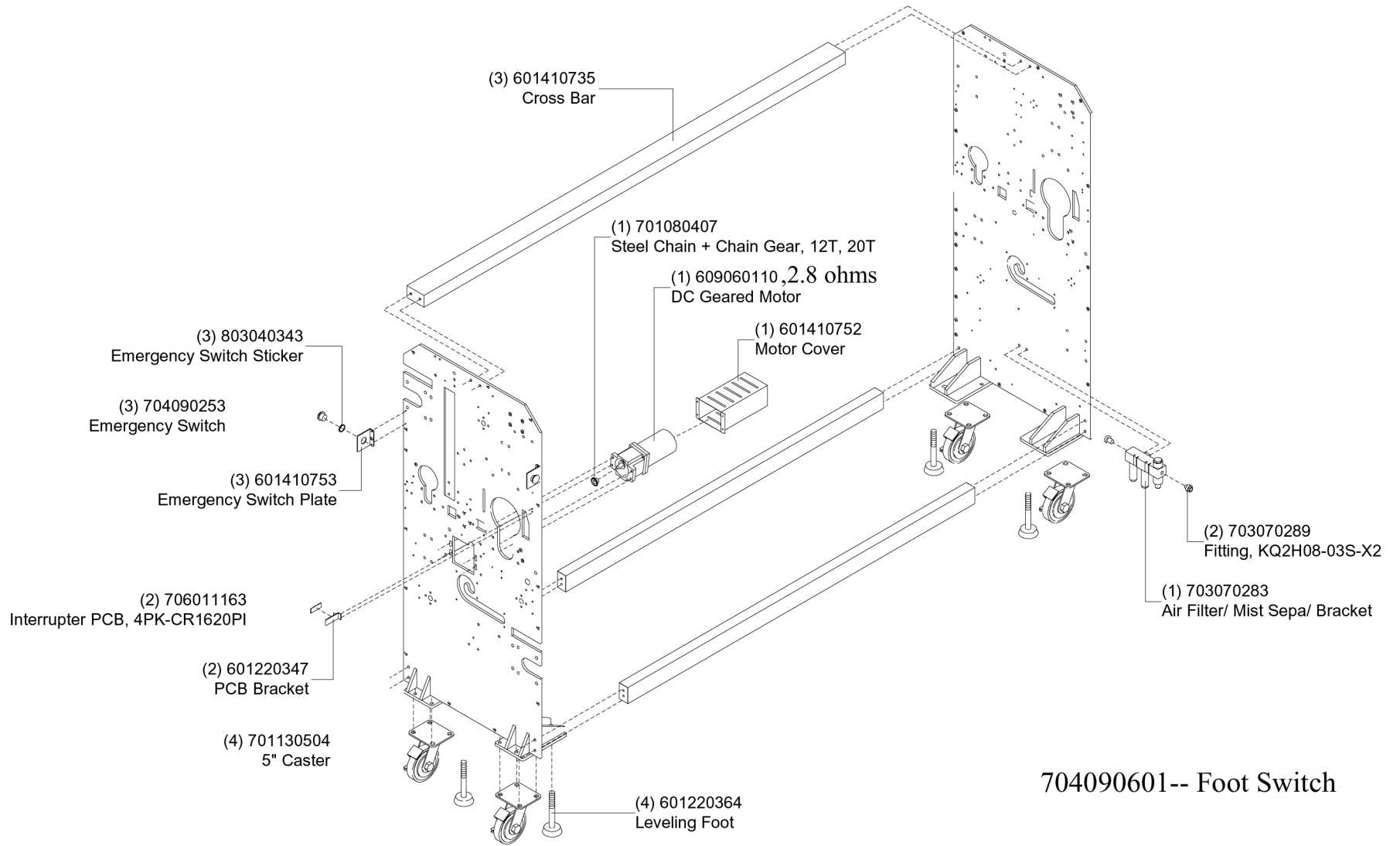
REVISION SUMMARY

DATE	DWG #	REV.	REASON	BY:
06/30/03	064-004	A	Fan part number was incorrect	SNF
07/07/03	064-010	A	Solid state relay part numbers added	SNF
07/07/03	064-011	A	Heater connection wire part numbers added	SNF

This page intentionally left blank.

PROPRIETARY

GBC CLAIMS PROPRIETARY RIGHTS TO THE MATERIAL DISCLOSED ON THIS DRAWING. IT IS ISSUED IN CONFIDENCE FOR ENGINEERING INFORMATION ONLY AND SHALL NOT BE REPRODUCED, COPIED OR DISCLOSED IN WHOLE OR IN PART, OR USED FOR MANUFACTURE OR FOR ANY OTHER PURPOSE WITHOUT WRITTEN PERMISSION FROM GBC.

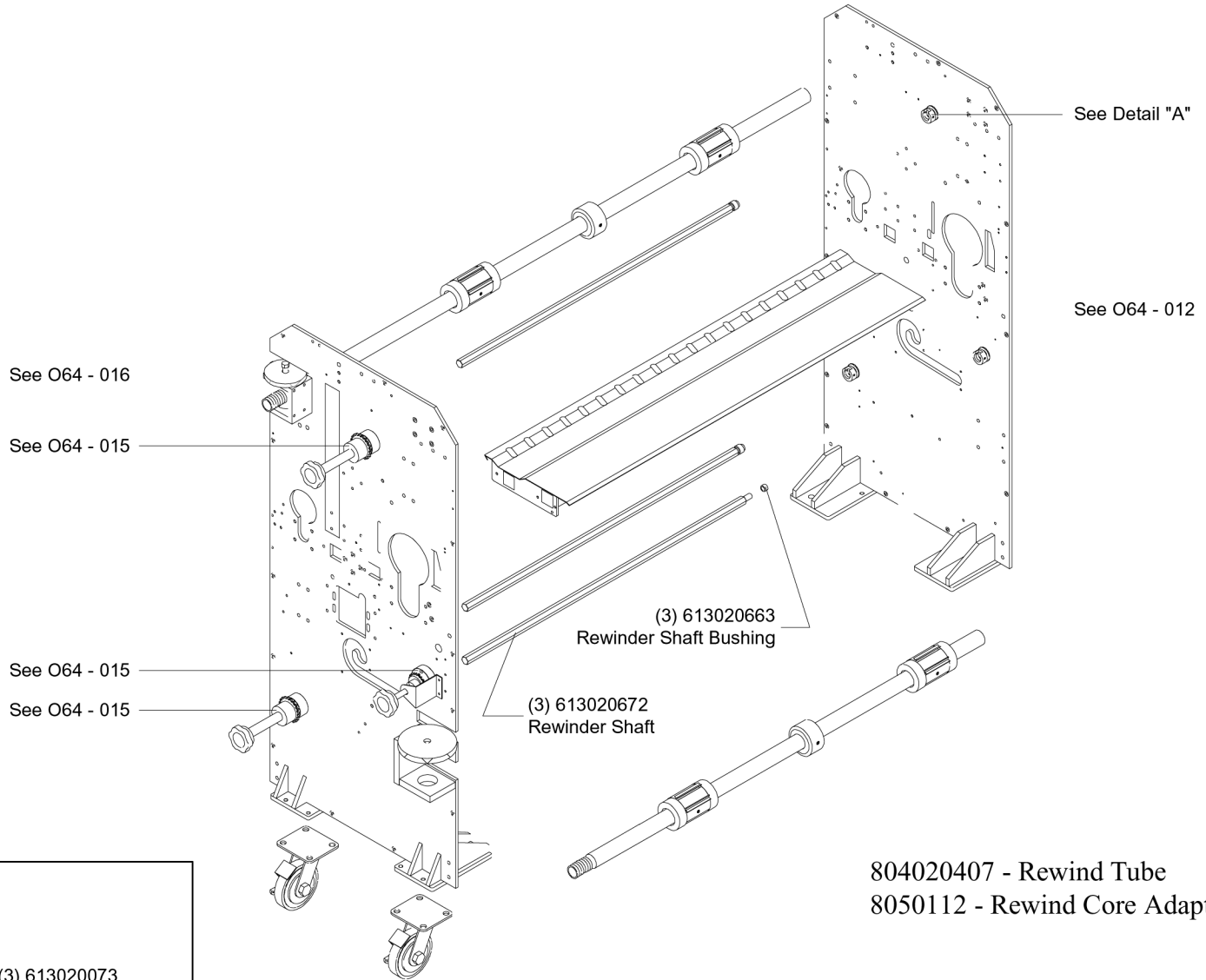


704090601-- Foot Switch

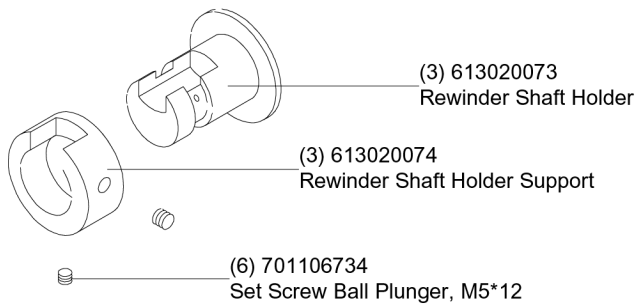
UNLESS OTHERWISE SPECIFIED TOLERANCE			GBC Industrial & Print Finishing Group 4151 Anderson Road, DeForest, WI 53532		
DIM AS SHOWN	TOL.	FINISH TO BE	TITLE :		
XX	+164	125	Frame Assembly		
X	±.454		GBC Orca 64		
XX	±.910		DATE:	DRAWN BY:	DWG SCALE:
XXX	±.929	ANGLES	06/20/03	N/A	N/A
XXXX	±.486	+10			O64 - 001

PROPRIETARY

GBC CLAIMS PROPRIETARY RIGHTS TO THE MATERIAL DISCLOSED ON THIS DRAWING. IT IS ISSUED IN CONFIDENCE FOR ENGINEERING INFORMATION ONLY AND SHALL NOT BE REPRODUCED, COPIED OR DISCLOSED IN WHOLE OR IN PART, OR USED FOR MANUFACTURE OR FOR ANY OTHER PURPOSE WITHOUT WRITTEN PERMISSION FROM GBC.



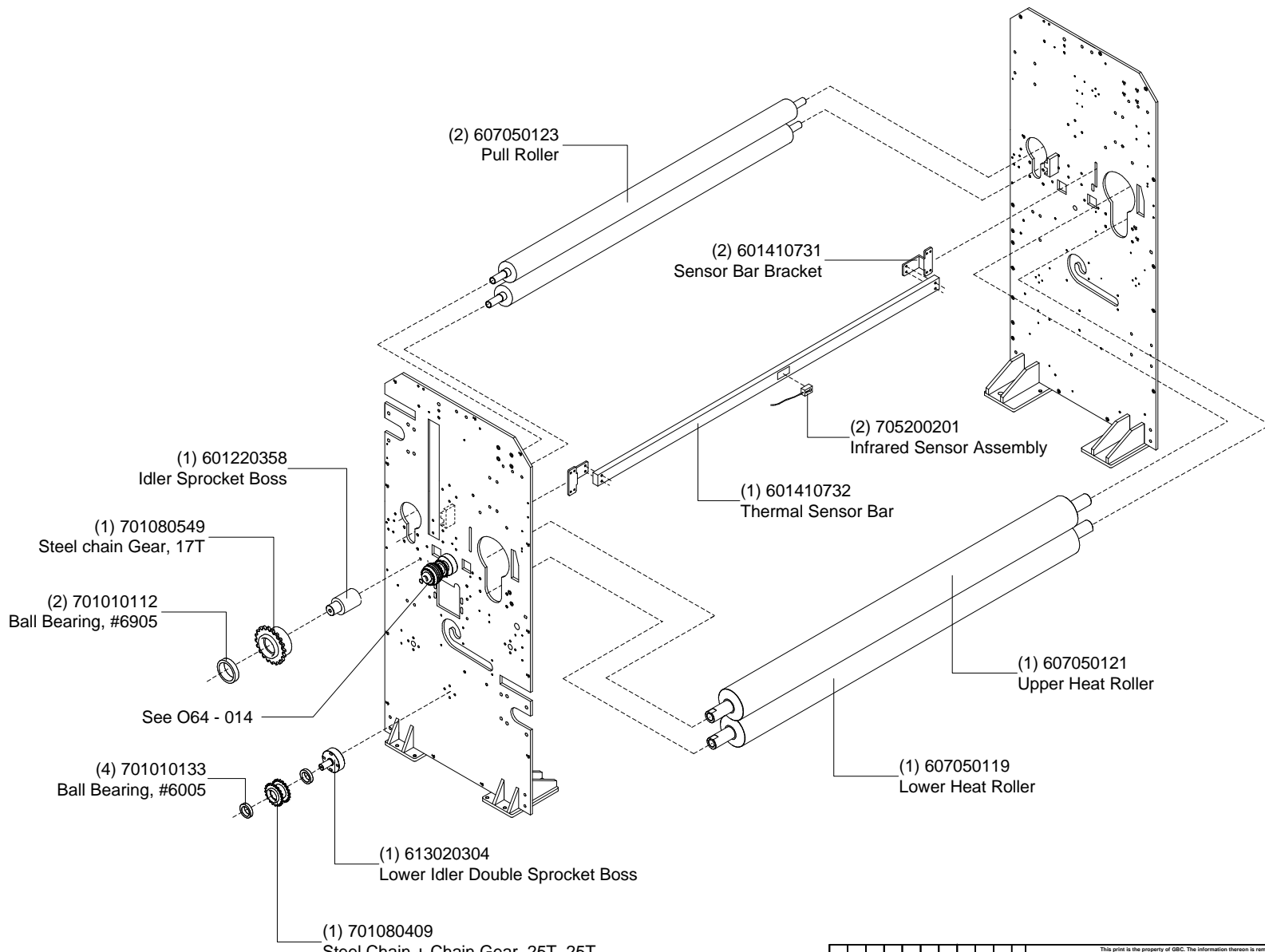
Detail "A"



UNLESS OTHERWISE SPECIFIED TOLERANCE			THIS PRINT IS THE PROPERTY OF GBC. THE INFORMATION THEREON IS REMITTED IN CONFIDENCE.		
DIM AS SHOWN	TOL.	FINISH TO BE	 4151 Anderson Road, DeForest, WI 53532		
XX	+164	125	TITLE : Bridge and Rewind Assembly GBC Orca 64		
X	±.454		DATE:	DRAWN BY:	DWG SCALE:
XX	±.910		06/20/03	N/A	N/A
XXX	±.929	ANGLES			
XXXX	±.486	+10			O64 - 002

PROPRIETARY

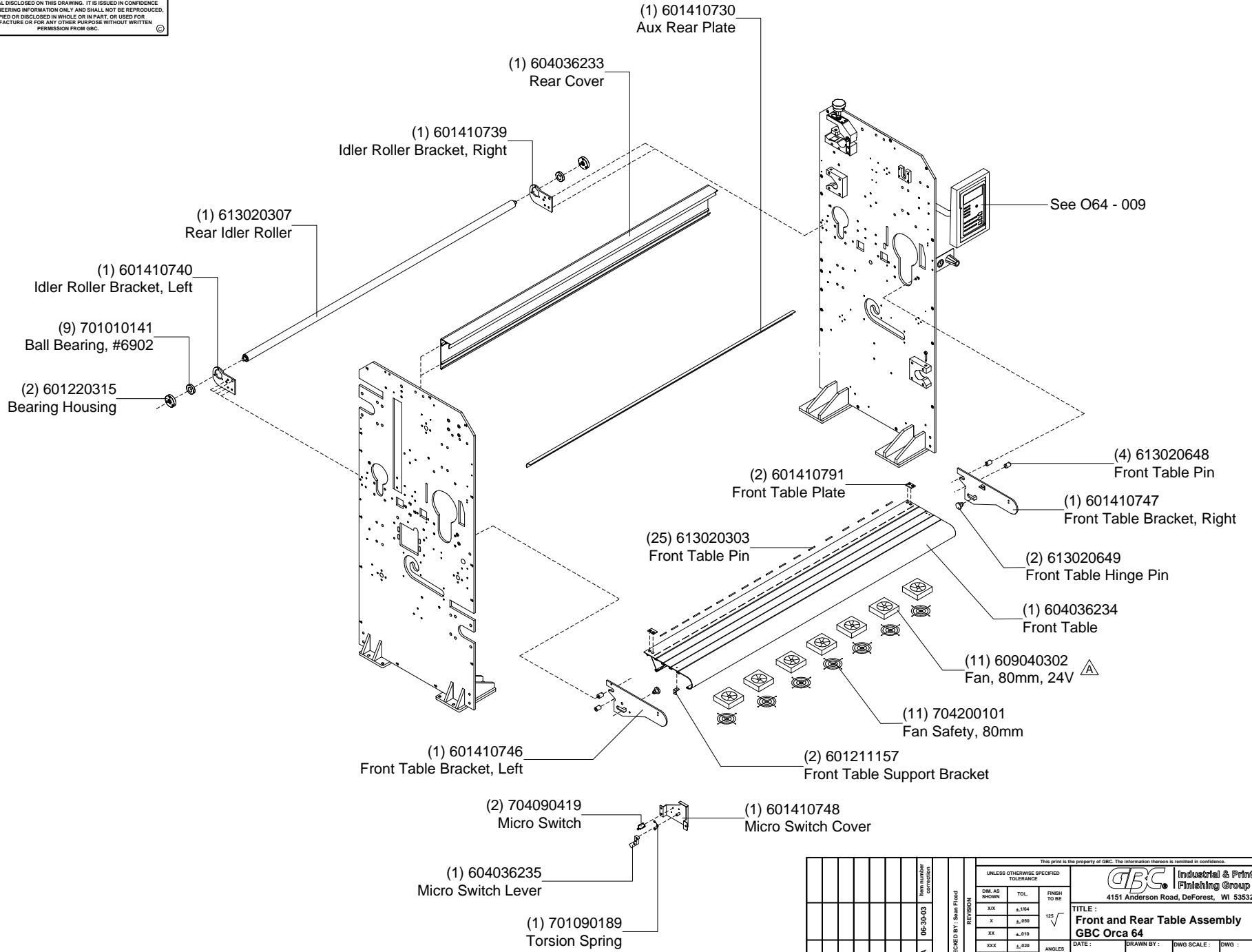
GBC CLAIMS PROPRIETARY RIGHTS TO THE MATERIAL DISCLOSED ON THIS DRAWING. IT IS ISSUED IN CONFIDENCE FOR ENGINEERING INFORMATION ONLY AND SHALL NOT BE REPRODUCED, COPIED OR DISCLOSED IN WHOLE OR IN PART, OR USED FOR MANUFACTURE OR FOR ANY OTHER PURPOSE WITHOUT WRITTEN PERMISSION FROM GBC.



UNLESS OTHERWISE SPECIFIED TOLERANCE			GBC Industrial & Print Finishing Group 4151 Anderson Road, DeForest, WI 53532		
DWG AS SHOWN	TOL.	FINISH TO BE	TITLE : Rollers and Sensor Assembly GBC Orca 64		
XX	±.164	125	DATE:	DRAWN BY:	DWG SCALE:
X	±.050		06/20/03	N/A	N/A
XX	±.010				
XXX	±.020	ANGLES			
XXXX	±.005	±.1°			O64 - 003

PROPRIETARY

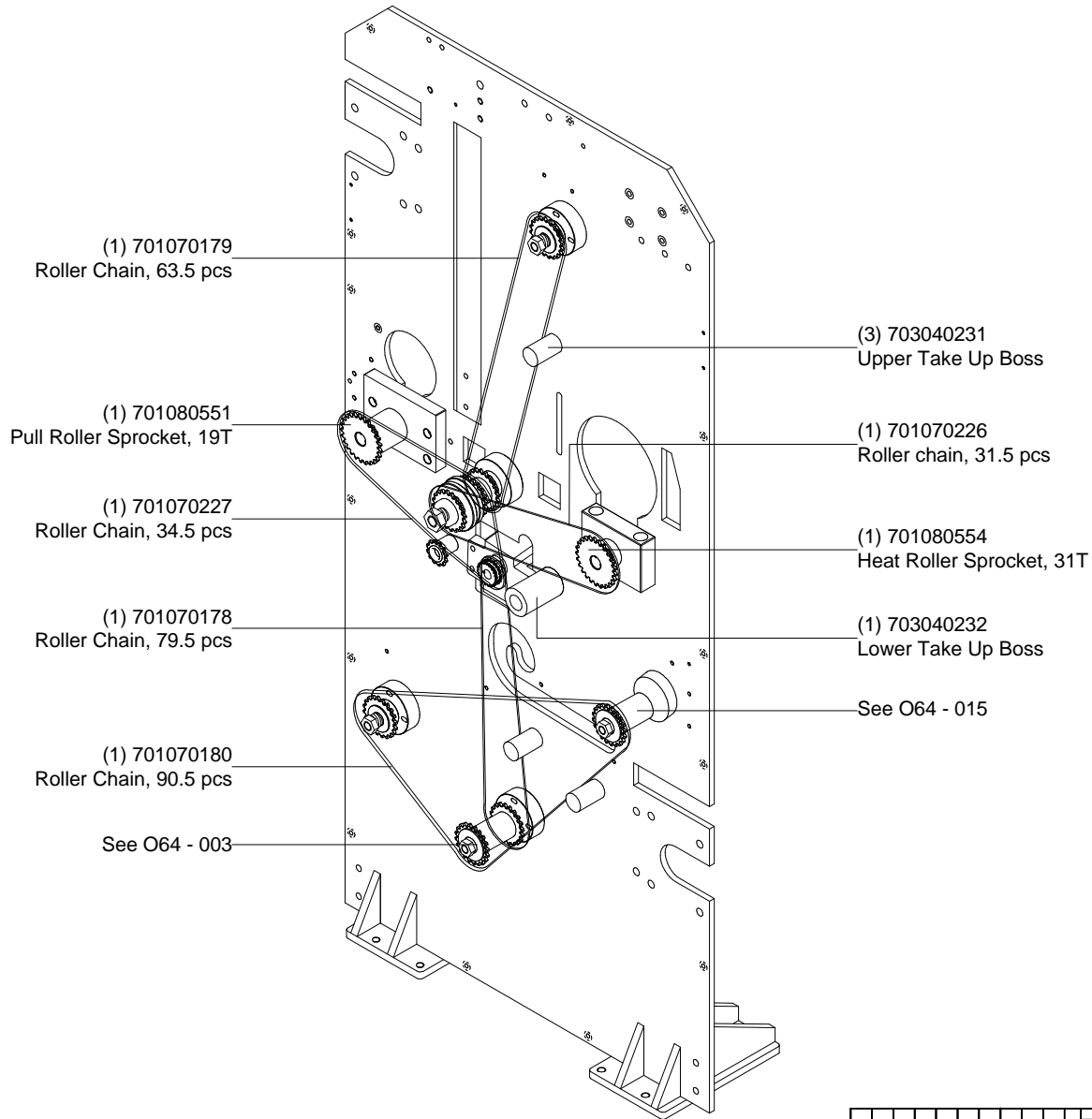
GBC CLAIMS PROPRIETARY RIGHTS TO THE MATERIAL DISCLOSED ON THIS DRAWING. IT IS ISSUED IN CONFIDENCE FOR ENGINEERING INFORMATION ONLY AND SHALL NOT BE REPRODUCED, COPIED OR DISCLOSED IN WHOLE OR IN PART, OR USED FOR MANUFACTURE OR FOR ANY OTHER PURPOSE WITHOUT WRITTEN PERMISSION FROM GBC.



REVISION		UNLESS OTHERWISE SPECIFIED TOLERANCE		GBC Industrial & Print Finishing Group 4151 Anderson Road, DeForest, WI 53532	
Item number	Item description	DIM AS SHOWN	TOL.	FINISH TO BE	TITLE :
A	06-00-03	XX	±.164	125	Front and Rear Table Assembly
		X	±.050		GBC Orca 64
		XX	±.010		DATE:
		XXX	±.020	ANGLES	06/20/03
		XXXX	±.005	±.15°	DRAWN BY: N/A
					DWG SCALE: N/A
					DWG : O64 - 004

PROPRIETARY

GBC CLAIMS PROPRIETARY RIGHTS TO THE MATERIAL DISCLOSED ON THIS DRAWING. IT IS ISSUED IN CONFIDENCE FOR ENGINEERING INFORMATION ONLY AND SHALL NOT BE REPRODUCED, COPIED OR DISCLOSED IN WHOLE OR IN PART, OR USED FOR MANUFACTURE OR FOR ANY OTHER PURPOSE WITHOUT WRITTEN PERMISSION FROM GBC.

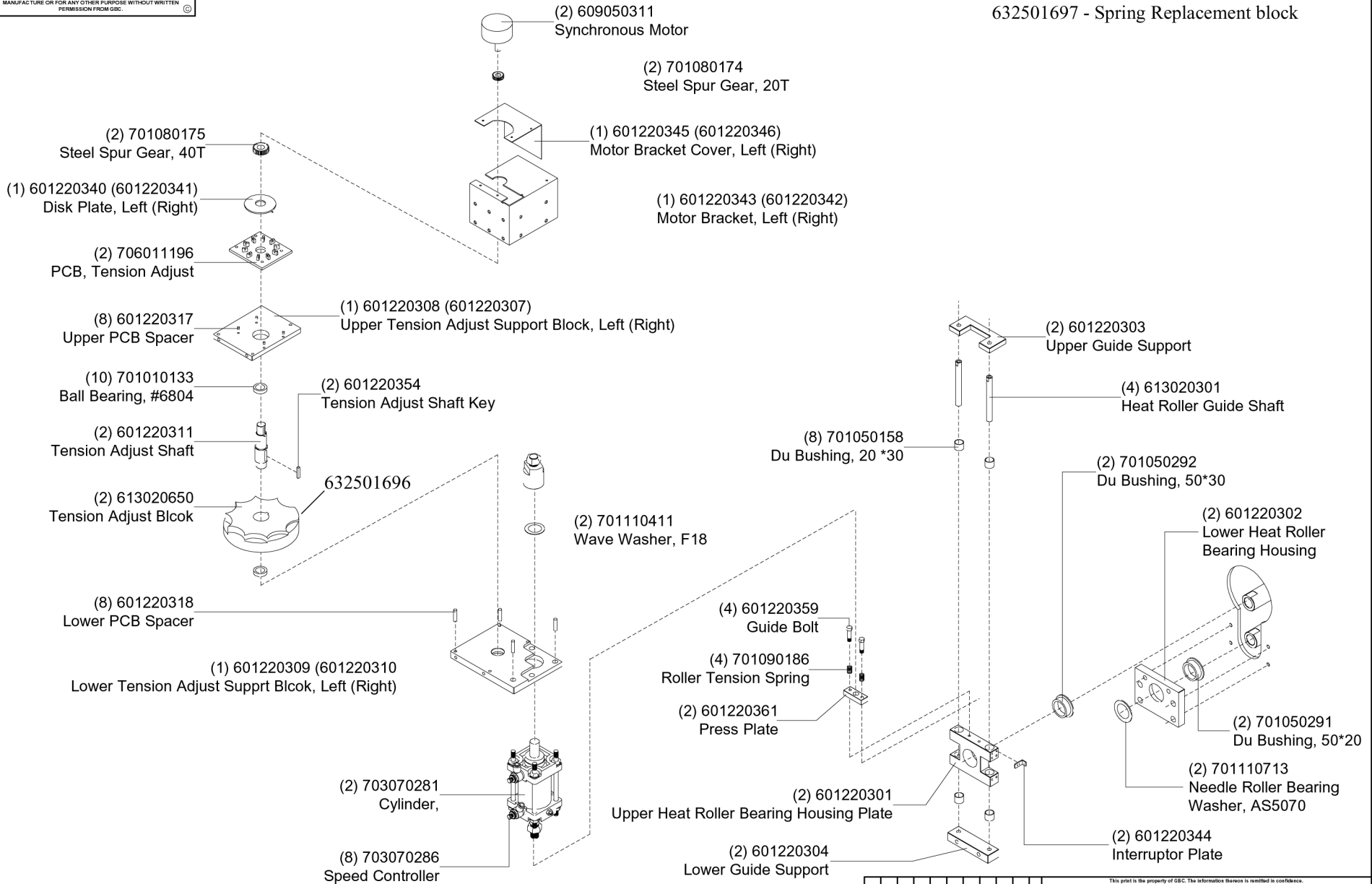


This print is the property of GBC. The information thereon is limited in confidence.									
UNLESS OTHERWISE SPECIFIED TOLERANCE									
DIM. AS SHOWN	TOL.	FINISH TO BE							
XX	±.164	125 ✓							
X	±.050								
XX	±.010								
XXX	±.020								
XXXX	±.005		ANGLES ±.15°						
GBC Industrial & Print Finishing Group 4151 Anderson Road, DeForest, WI 53532			TITLE : Chain Linking Assembly GBC Orca 64						
CHECKED BY: Sean Flood REVISION			DATE:	DRAWN BY:	DWG SCALE:	DWG :			
			06/20/03	N/A	N/A	O64 - 005			

PROPRIETARY

GBC CLAIMS PROPRIETARY RIGHTS TO THE MATERIAL DISCLOSED ON THIS DRAWING. IT IS ISSUED IN CONFIDENCE FOR ENGINEERING INFORMATION ONLY AND SHALL NOT BE REPRODUCED, COPIED OR DISCLOSED IN WHOLE OR IN PART, OR USED FOR MANUFACTURE OR FOR ANY OTHER PURPOSE WITHOUT WRITTEN PERMISSION FROM GBC.

632501696 - Standard Shim Wheel
632501697 - Spring Replacement block

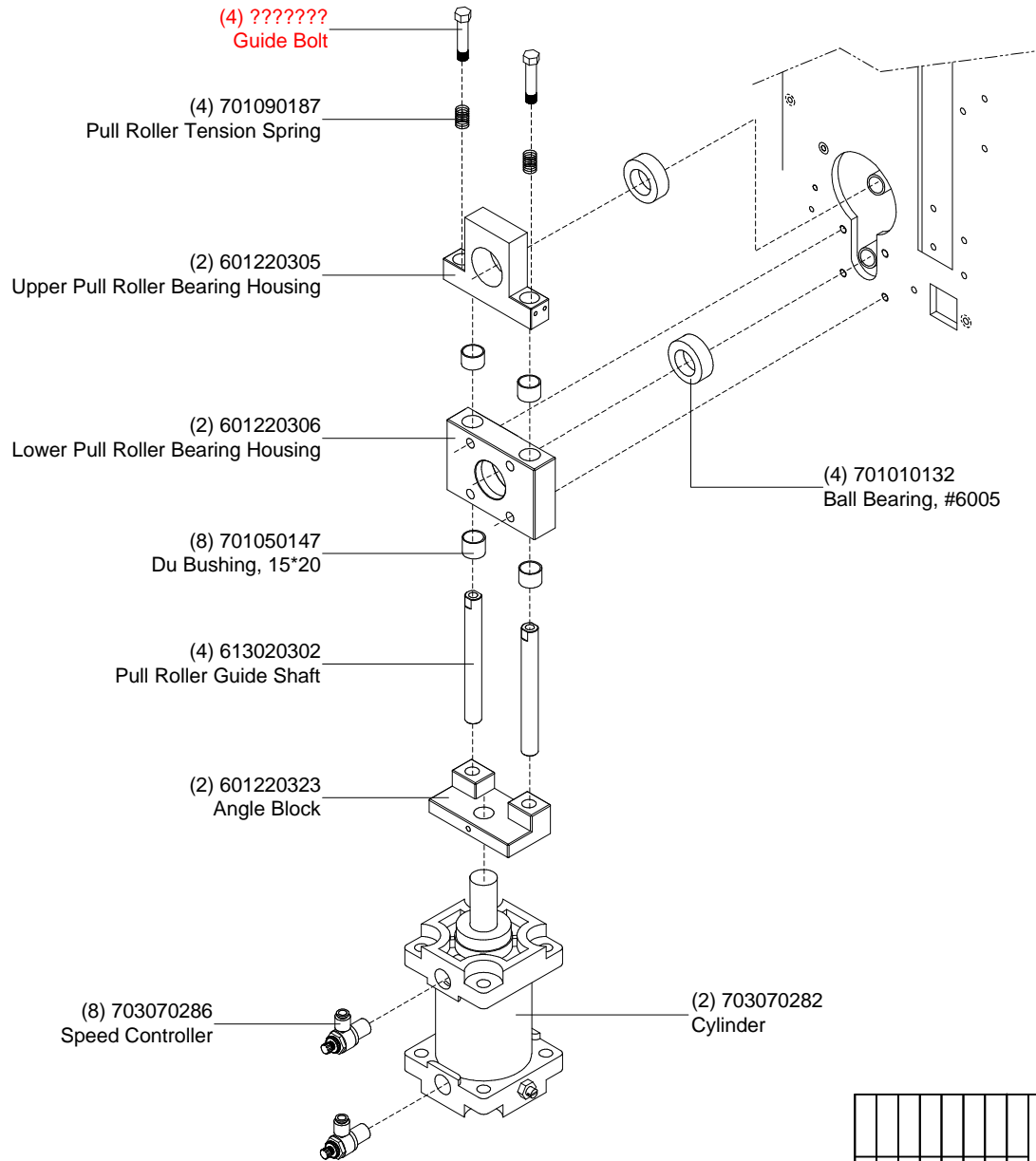


UNLESS OTHERWISE SPECIFIED TOLERANCE			FINISH TO BE		
DIM AS SHOWN	TOL.				
XX	+ .164		125		
X	± .454				
XX	± .310				
XXX	± .321		ANGLES		
XXXX	± .486		+10		

CHECKED BY: <i>Shawn Flood</i>	This print is the property of GBC. The information hereon is resented in confidence.		
REVISION	 Industrial & Print Finishing Group 4151 Anderson Road, DeForest, WI 53532		
	TITLE : Main Roller Lift Assembly GBC Orca 64		
	DATE: 06/20/03	DRAWN BY: N/A	DWG SCALE: N/A
			DWG: O64 - 006

PROPRIETARY

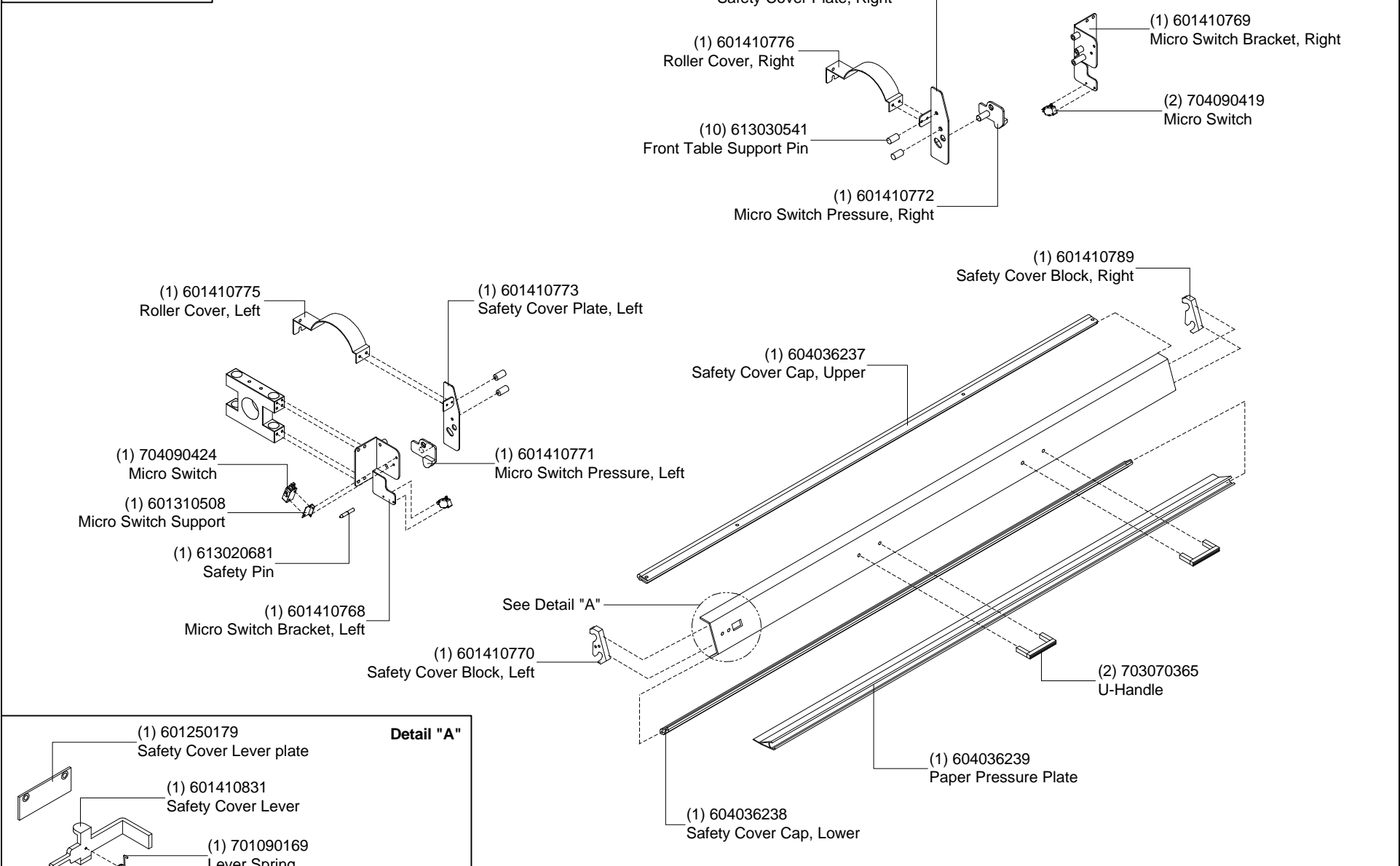
GBC CLAIMS PROPRIETARY RIGHTS TO THE MATERIAL DISCLOSED ON THIS DRAWING. IT IS ISSUED IN CONFIDENCE FOR ENGINEERING INFORMATION ONLY AND SHALL NOT BE REPRODUCED, COPIED OR DISCLOSED IN WHOLE OR IN PART, OR USED FOR MANUFACTURE OR FOR ANY OTHER PURPOSE WITHOUT WRITTEN PERMISSION FROM GBC.



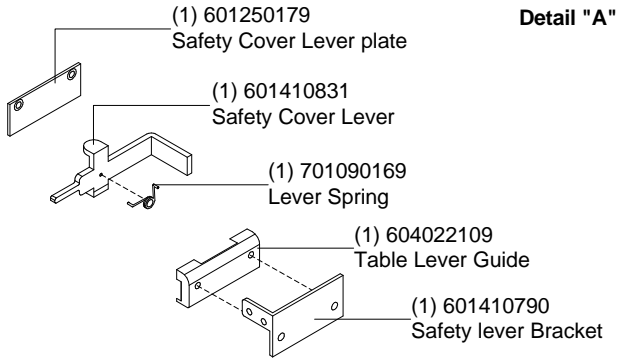
UNLESS OTHERWISE SPECIFIED TOLERANCE				GBC Industrial & Print Finishing Group 4151 Anderson Road, DeForest, WI 53532	
DIM AS SHOWN	TOL.	FINISH TO BE	TITLE : Pull Roller Lift Assembly GBC Orca 64		
XX	±.164	125 ✓	DATE:	DRAWN BY:	DWG SCALE:
X	±.050		06/20/03	N/A	N/A
XX	±.010	ANGLES ±.1°	DWG : O64 - 007		
XXX	±.020				
XXXX	±.005				

PROPRIETARY

GBC CLAIMS PROPRIETARY RIGHTS TO THE MATERIAL DISCLOSED ON THIS DRAWING. IT IS ISSUED IN CONFIDENCE FOR ENGINEERING INFORMATION ONLY AND SHALL NOT BE REPRODUCED, COPIED OR DISCLOSED IN WHOLE OR IN PART, OR USED FOR MANUFACTURE OR FOR ANY OTHER PURPOSE WITHOUT WRITTEN PERMISSION FROM GBC.



Detail "A"



UNLESS OTHERWISE SPECIFIED TOLERANCE			GBC Industrial & Print Finishing Group 4151 Anderson Road, DeForest, WI 53532		
DWG AS SHOWN	TOL.	FINISH TO BE	TITLE : Safety Shield Assembly GBC Orca 64		
XX	±.164	125	DATE:	DRAWN BY:	DWG SCALE:
X	±.050		06/20/03	N/A	N/A
XX	±.010				
XXX	±.020	ANGLES			
XXXX	±.005	±.1°			O64 - 008

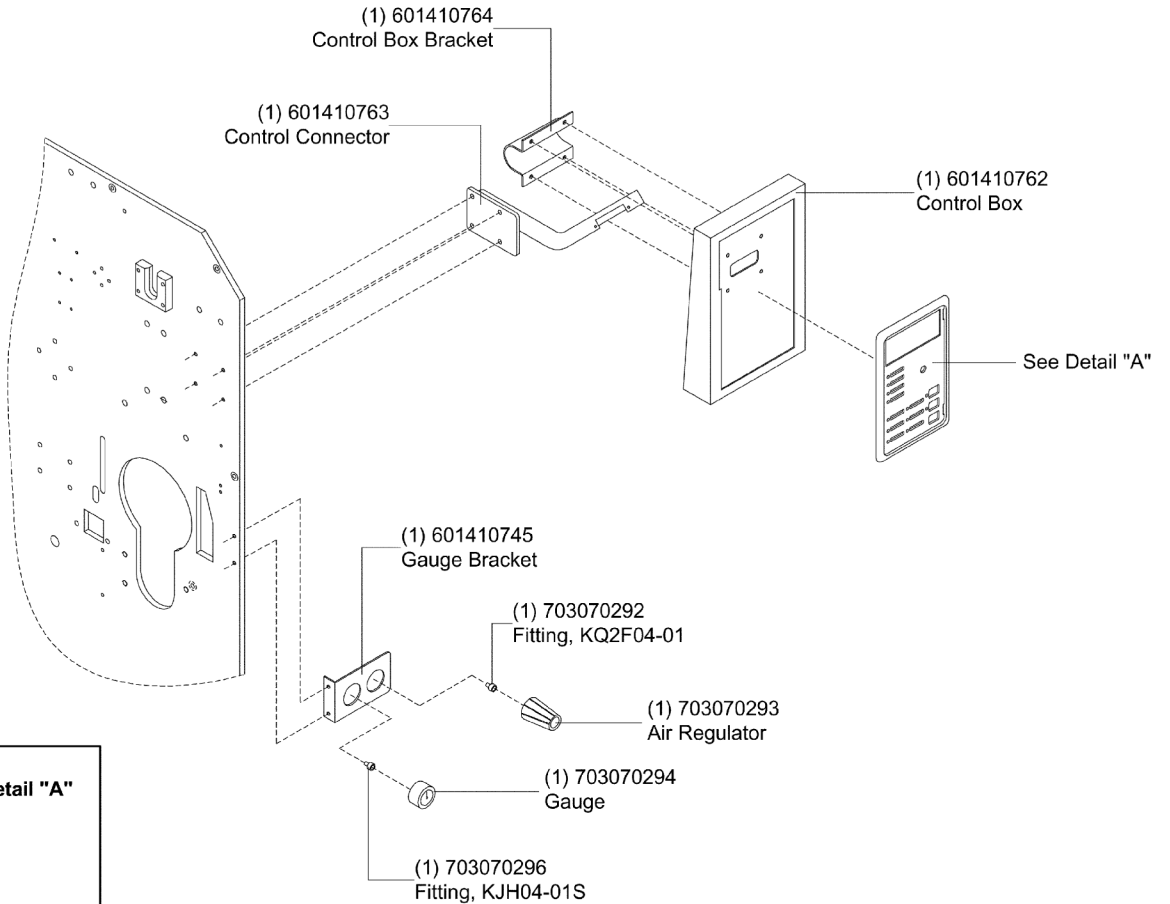
PROPRIETARY

GBC CLAIMS PROPRIETARY RIGHTS TO THE MATERIAL DISCLOSED ON THIS DRAWING. IT IS ISSUED IN CONFIDENCE FOR ENGINEERING INFORMATION ONLY AND SHALL NOT BE REPRODUCED, COPIED OR DISCLOSED IN WHOLE OR IN PART, OR USED FOR MANUFACTURE OR FOR ANY OTHER PURPOSE WITHOUT WRITTEN PERMISSION FROM GBC.

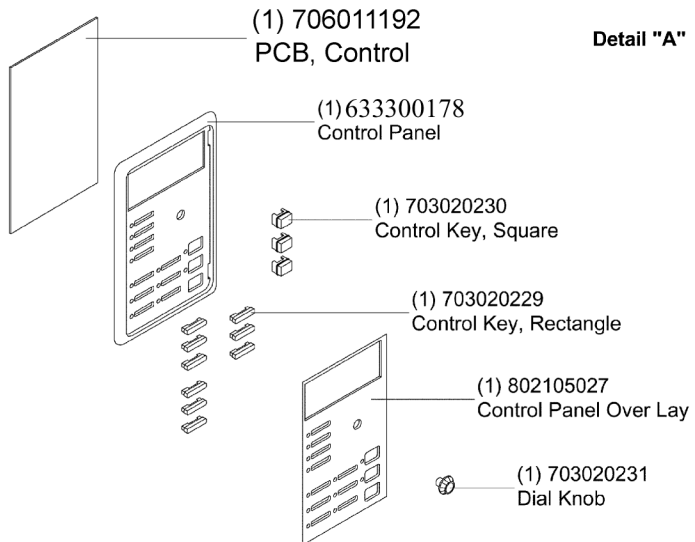
(1) 638400089
LCD, Display (Not Shown)

(1) 704166406
20 Pin Ribbon Cable from LCD Display PCB to Main PCB (Not Shown)

(1) 638001128
16 Pin Ribbon Cable from PCB, Control To Main PCB - (Not Shown)



Detail "A"



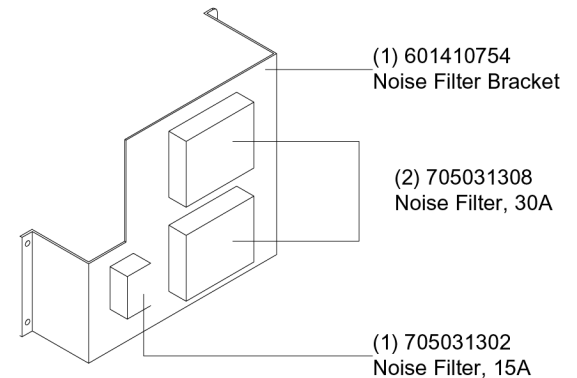
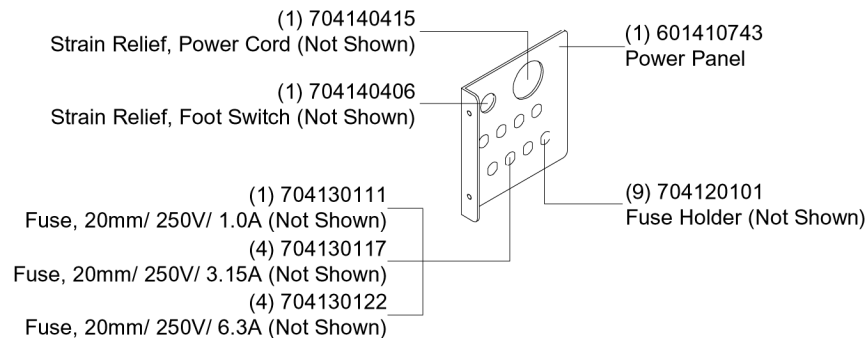
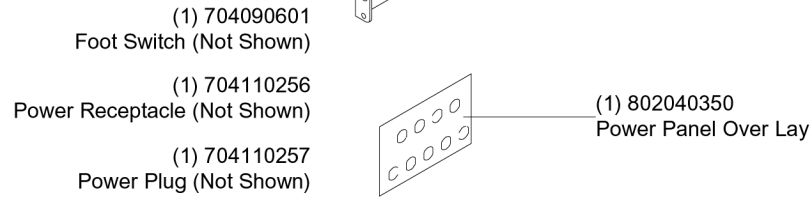
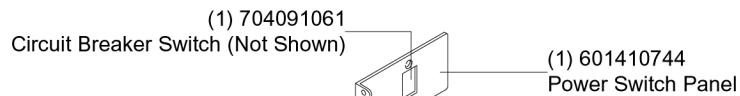
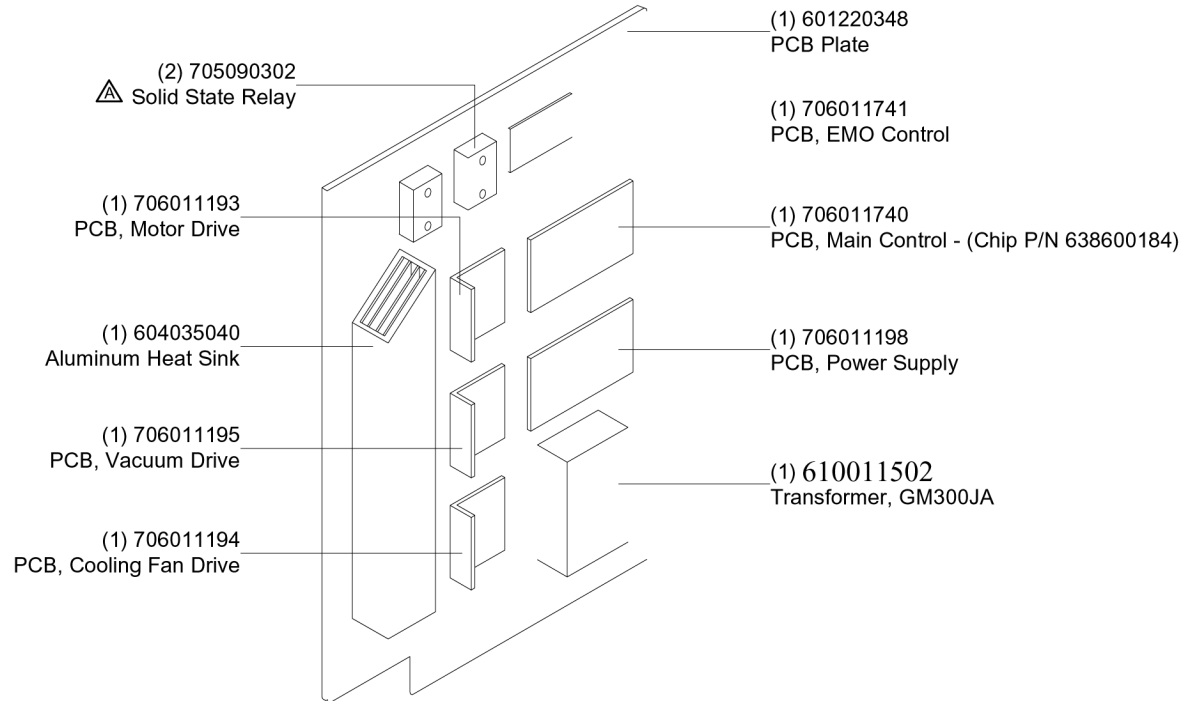
UNLESS OTHERWISE SPECIFIED TOLERANCE		FINISH TO BE	
DM. AS SHOWN	TOL.		
XX	±.154	125	✓
X	±.050		
XX	±.010		
XXX	±.005		
XXXX	±.005		

<small>This print is the property of GBC. The information thereon is intended in confidence.</small>			
Industrial & Print Finishing Group 4151 Anderson Road, DeForest, WI 53532		TITLE : Control Panel Assembly GBC Orca 64	
DATE :	DRAWN BY :	DWG SCALE :	DWG :
06/20/03	N/A	N/A	O64 - 009

PROPRIETARY

GBC CLAIMS PROPRIETARY RIGHTS TO THE MATERIAL DISCLOSED ON THIS DRAWING. IT IS ISSUED IN CONFIDENCE FOR ENGINEERING INFORMATION ONLY AND SHALL NOT BE REPRODUCED, COPIED OR DISCLOSED IN WHOLE OR IN PART, OR USED FOR MANUFACTURE OR FOR ANY OTHER PURPOSE WITHOUT WRITTEN PERMISSION FROM GBC.

Bridge Rectifier - 705030503
Newest Rev Chip - 2.7.2 (7/19/05)

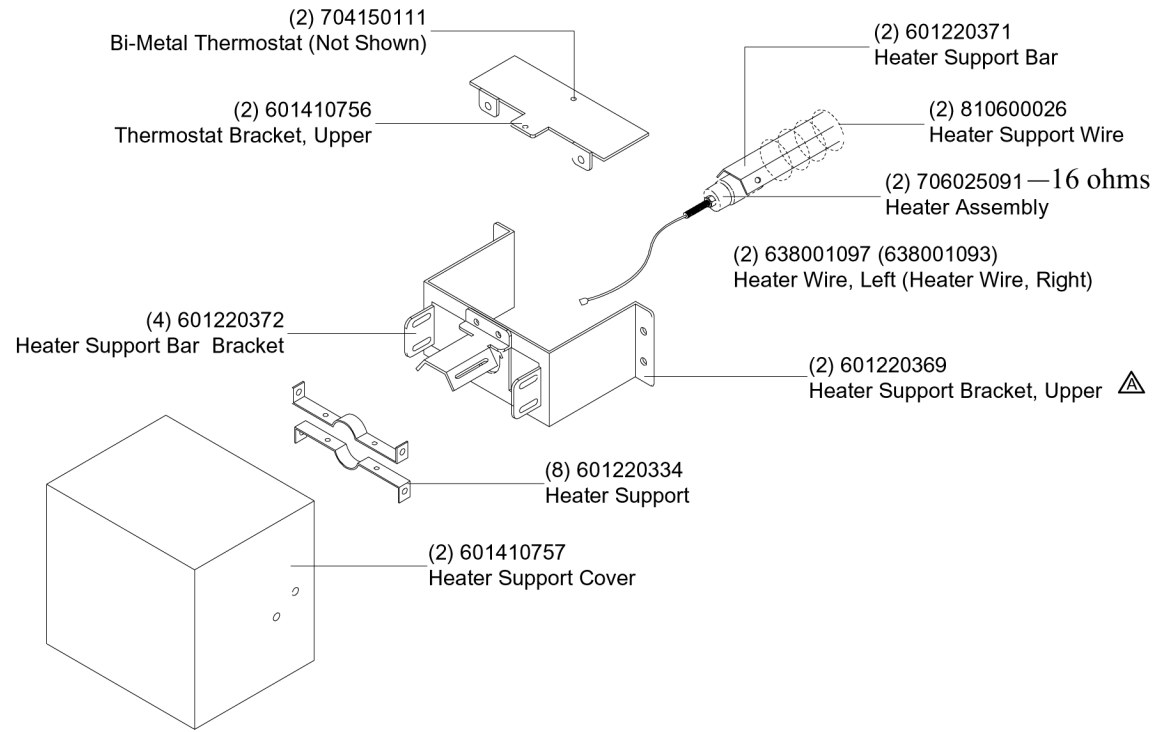


REVISION										UNLESS OTHERWISE SPECIFIED TOLERANCE			GBC Industrial & Print Finishing Group 4151 Anderson Road, DeForest, WI 53532		
NO.	DATE	BY	DESCRIPTION	ITEMS ADDED	DIM AS SHOWN	TOL.	FINISH TO BE	TITLE :							
A	07/03				XX	+164	125	Power Panel Assembly							
					X	±.454		GBC Orca 64							
					XX	±.310		DATE: 06/20/03							
					XXX	±.321	ANGLES	DRAWN BY: N/A							
					XXXX	±.486	+10	DWG SCALE: N/A							
								DWG: O64 - 010							

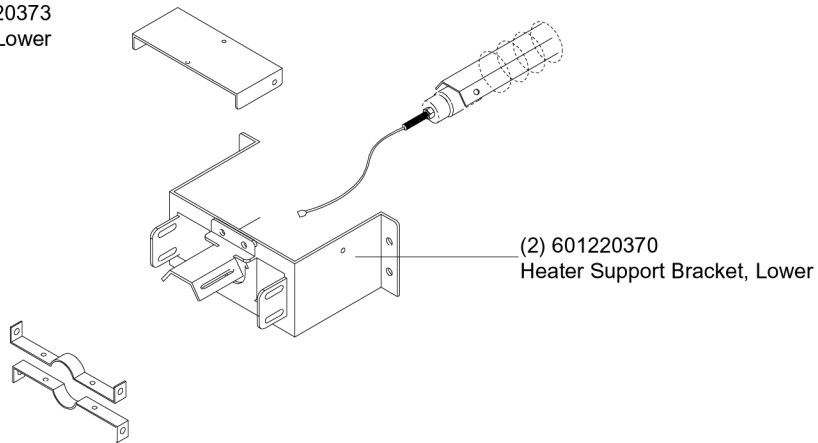
PROPRIETARY

GBC CLAIMS PROPRIETARY RIGHTS TO THE MATERIAL DISCLOSED ON THIS DRAWING. IT IS ISSUED IN CONFIDENCE FOR ENGINEERING INFORMATION ONLY AND SHALL NOT BE REPRODUCED, COPIED OR DISCLOSED IN WHOLE OR IN PART, OR USED FOR MANUFACTURE OR FOR ANY OTHER PURPOSE WITHOUT WRITTEN PERMISSION FROM GBC.

Upper Heater Assembly



**(1) 601220373
Thermostat Bracket, Lower**

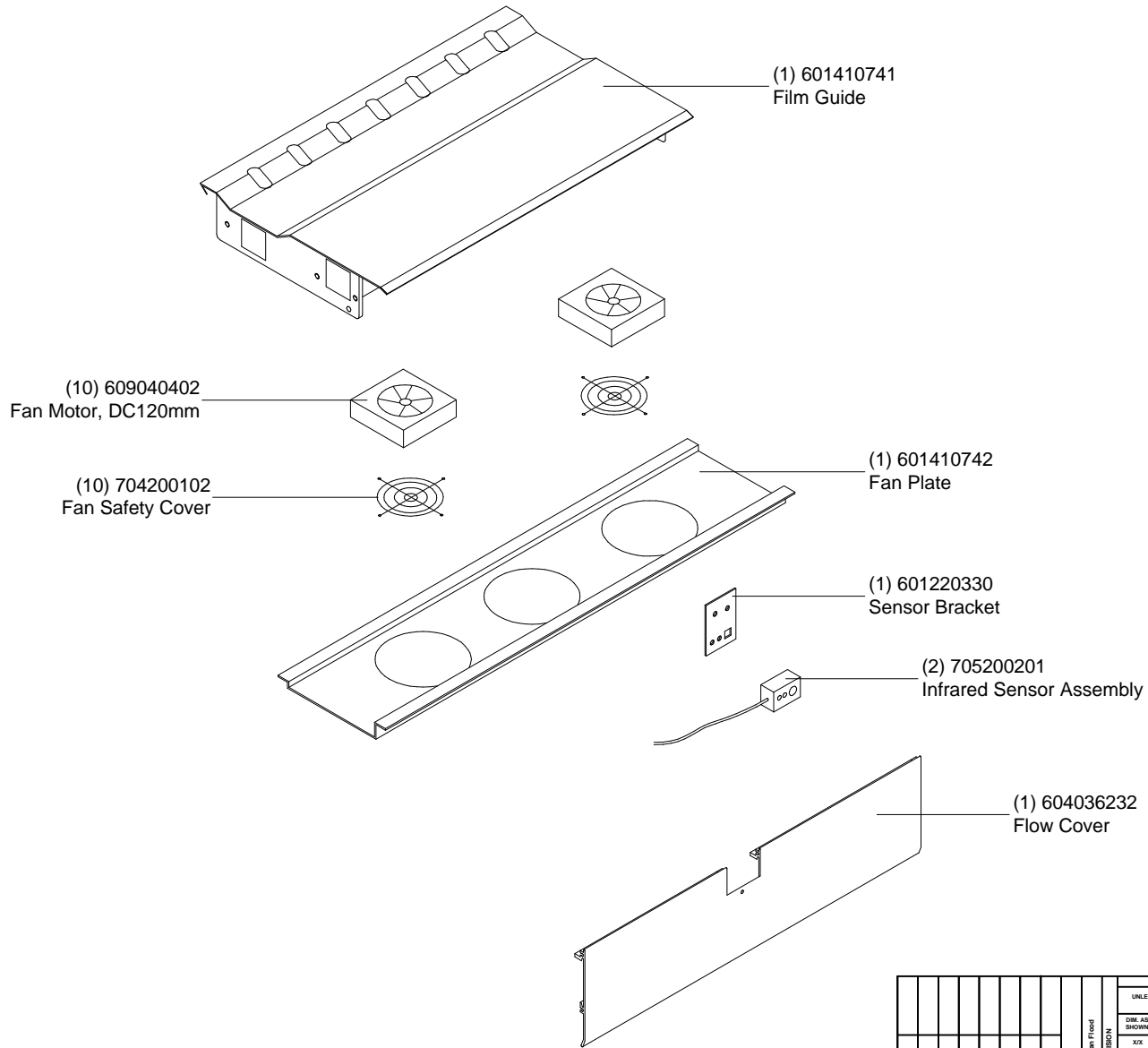


Lower Heater Assembly

UNLESS OTHERWISE SPECIFIED TOLERANCE				FINISH TO BE		TITLE :	
DIM AS SHOWN	TOL.			125		GBC Industrial & Print Finishing Group 4151 Anderson Road, DeForest, WI 53532	
XX	+ .164					Heater Assembly GBC Orca 64	
X	± .454					DATE:	DRAWN BY:
XX	± .310					06/20/03	N/A
XXX	± .321			ANGLES		DWG SCALE:	DWG :
XXXX	± .486			+10		N/A	O64 - 011

PROPRIETARY

GBC CLAIMS PROPRIETARY RIGHTS TO THE MATERIAL DISCLOSED ON THIS DRAWING. IT IS ISSUED IN CONFIDENCE FOR ENGINEERING INFORMATION ONLY AND SHALL NOT BE REPRODUCED, COPIED OR DISCLOSED IN WHOLE OR IN PART, OR USED FOR MANUFACTURE OR FOR ANY OTHER PURPOSE WITHOUT WRITTEN PERMISSION FROM GBC.



This print is the property of GBC. The information thereon is limited in confidence.									
		UNLESS OTHERWISE SPECIFIED TOLERANCE		GBC Industrial & Print Finishing Group 4151 Anderson Road, DeForest, WI 53532					
DIM. AS SHOWN	TOL.			FINISH TO BE					
XX	±.164			125					
X	±.050			✓					
XX	±.010								
XXX	±.020								
XXXX	±.005			ANGLES ±.1°					
TITLE :		DATE :		DRAWN BY :		DWG SCALE :		DWG :	
Film guide Assembly GBC Orca 64		06/20/03		N/A		N/A		O64 - 012	

PROPRIETARY

GBC CLAIMS PROPRIETARY RIGHTS TO THE MATERIAL DISCLOSED ON THIS DRAWING. IT IS ISSUED IN CONFIDENCE FOR ENGINEERING INFORMATION ONLY AND SHALL NOT BE REPRODUCED, COPIED OR DISCLOSED IN WHOLE OR IN PART, OR USED FOR MANUFACTURE OR FOR ANY OTHER PURPOSE WITHOUT WRITTEN PERMISSION FROM GBC.

Upper Idler

(2) 613020122
Idler Roller Housing

(2) 701010113
Ball Bearing, #6907

(1) 613020310
Idler Roller, Teflon

(1) 613020197
Idler Roller

Lower Idler

(4) 601220322
Idler Roller Cover

(2) 601220321
Idler Roller Pin

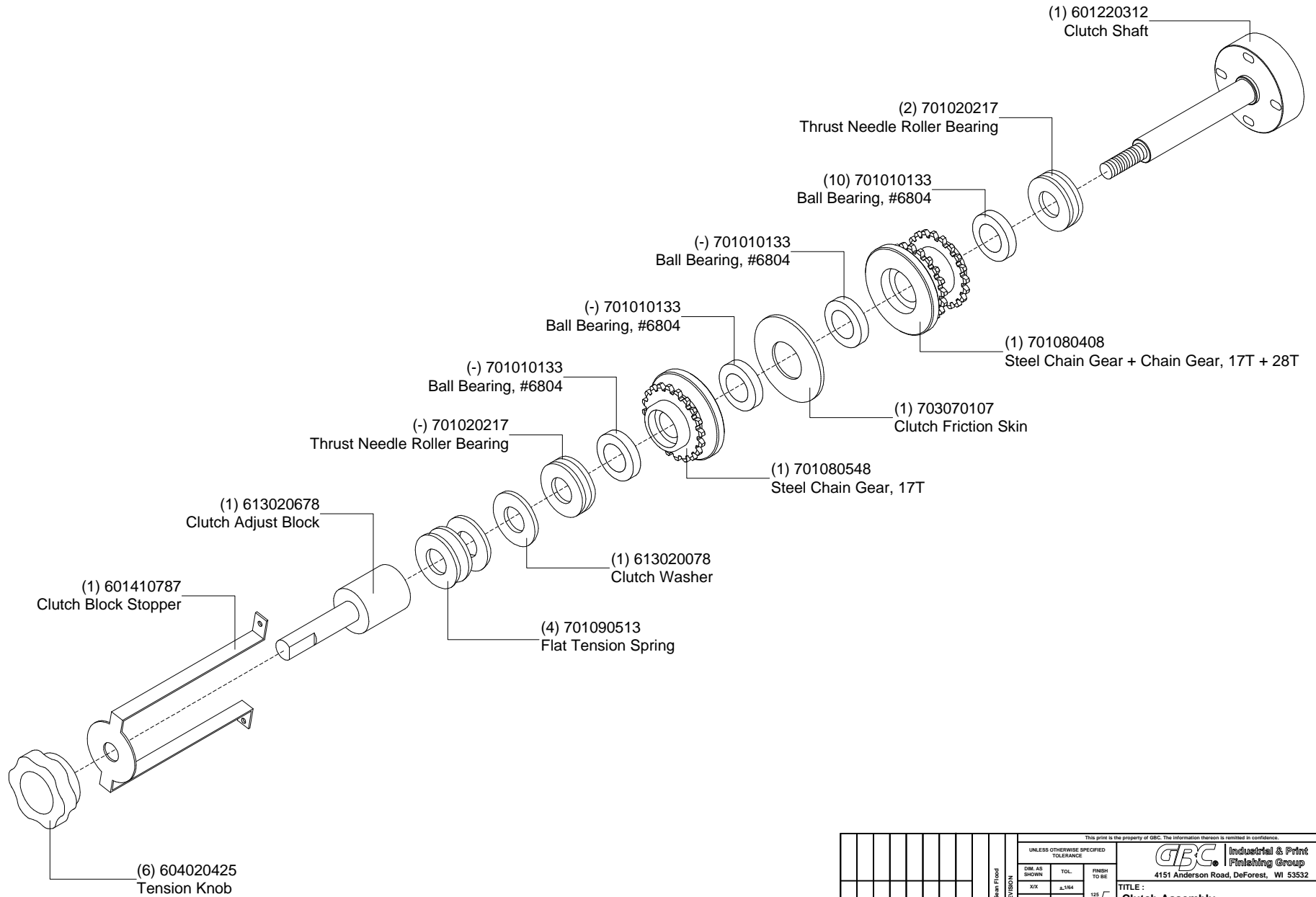
(9) 701010141
Ball Bearing, #6902

(2) 601410737
Channel Cover

This print is the property of GBC. The information thereon is limited in confidence.									
UNLESS OTHERWISE SPECIFIED TOLERANCE									
DIM AS SHOWN	TOL.	FINISH TO BE							
XX	±.164	125 ✓							
X	±.050								
XX	±.010								
XXX	±.020	ANGLES ±.15°							
XXXX	±.005								
GBC Industrial & Print Finishing Group 4151 Anderson Road, DeForest, WI 53532		TITLE : Upper and Lower Idler Assembly GBC Orca 64							
DATE: 06/20/03		DRAWN BY: N/A		DWG SCALE: N/A		DWG : O64 - 013			

PROPRIETARY

GBC CLAIMS PROPRIETARY RIGHTS TO THE MATERIAL DISCLOSED ON THIS DRAWING. IT IS ISSUED IN CONFIDENCE FOR ENGINEERING INFORMATION ONLY AND SHALL NOT BE REPRODUCED, COPIED OR DISCLOSED IN WHOLE OR IN PART, OR USED FOR MANUFACTURE OR FOR ANY OTHER PURPOSE WITHOUT WRITTEN PERMISSION FROM GBC.



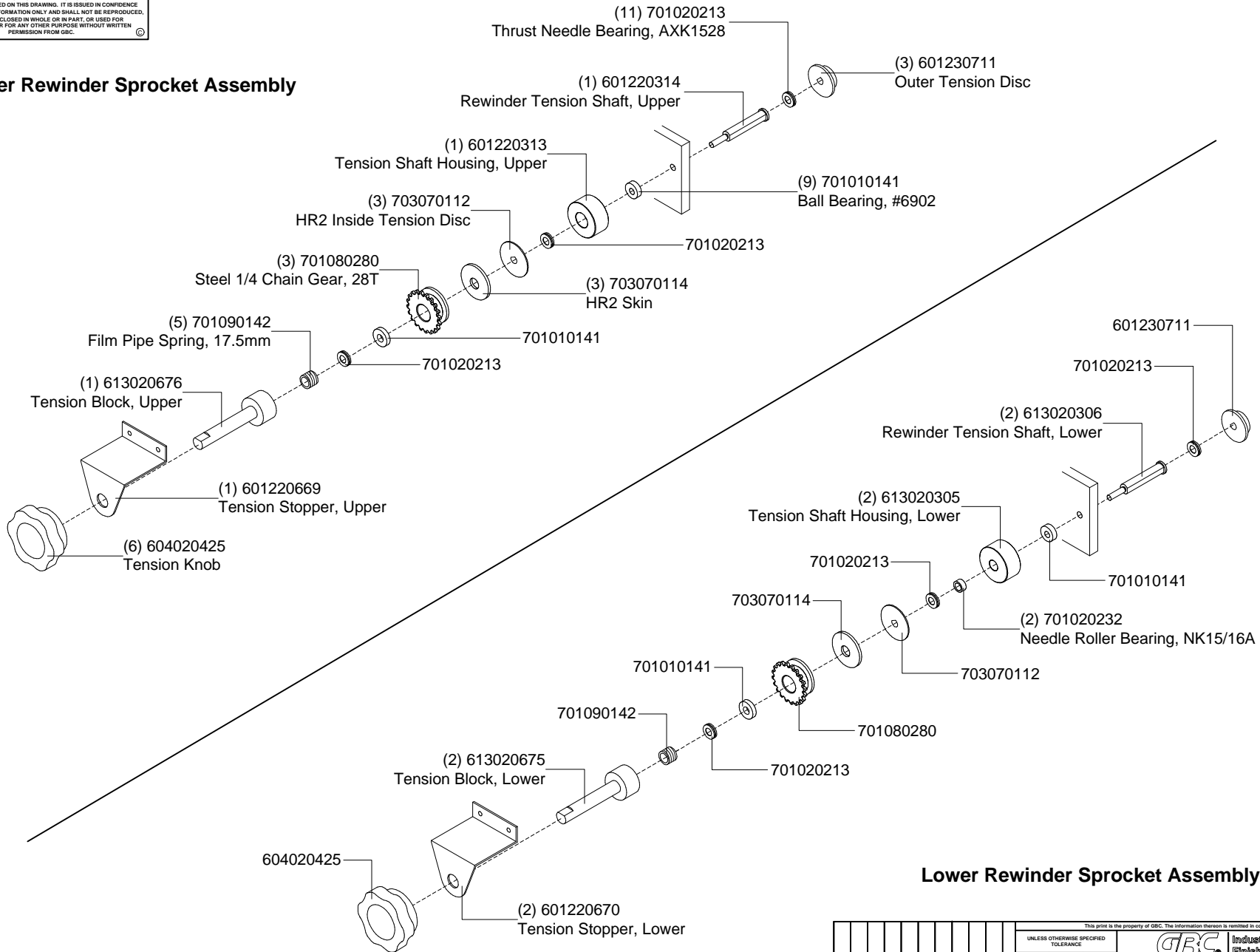
UNLESS OTHERWISE SPECIFIED TOLERANCE			
DWG AS SHOWN	TOL.	FINISH TO BE	
XX	±.164	125	✓
X	±.050		
XX	±.010		
XXX	±.020	ANGLES	±.15°
XXXX	±.005		

This print is the property of GBC. The information thereon is limited in confidence.			
GBC Industrial & Print Finishing Group 4151 Anderson Road, DeForest, WI 53532		TITLE : Clutch Assembly GBC Orca 64	
DATE: 06/20/03	DRAWN BY: N/A	DWG SCALE: N/A	DWG : O64 - 014

PROPRIETARY

GBC CLAIMS PROPRIETARY RIGHTS TO THE MATERIAL DISCLOSED ON THIS DRAWING. IT IS ISSUED IN CONFIDENCE FOR ENGINEERING INFORMATION ONLY AND SHALL NOT BE REPRODUCED, COPIED OR DISCLOSED IN WHOLE OR IN PART, OR USED FOR MANUFACTURE OR FOR ANY OTHER PURPOSE WITHOUT WRITTEN PERMISSION FROM GBC.

Upper Rewinder Sprocket Assembly



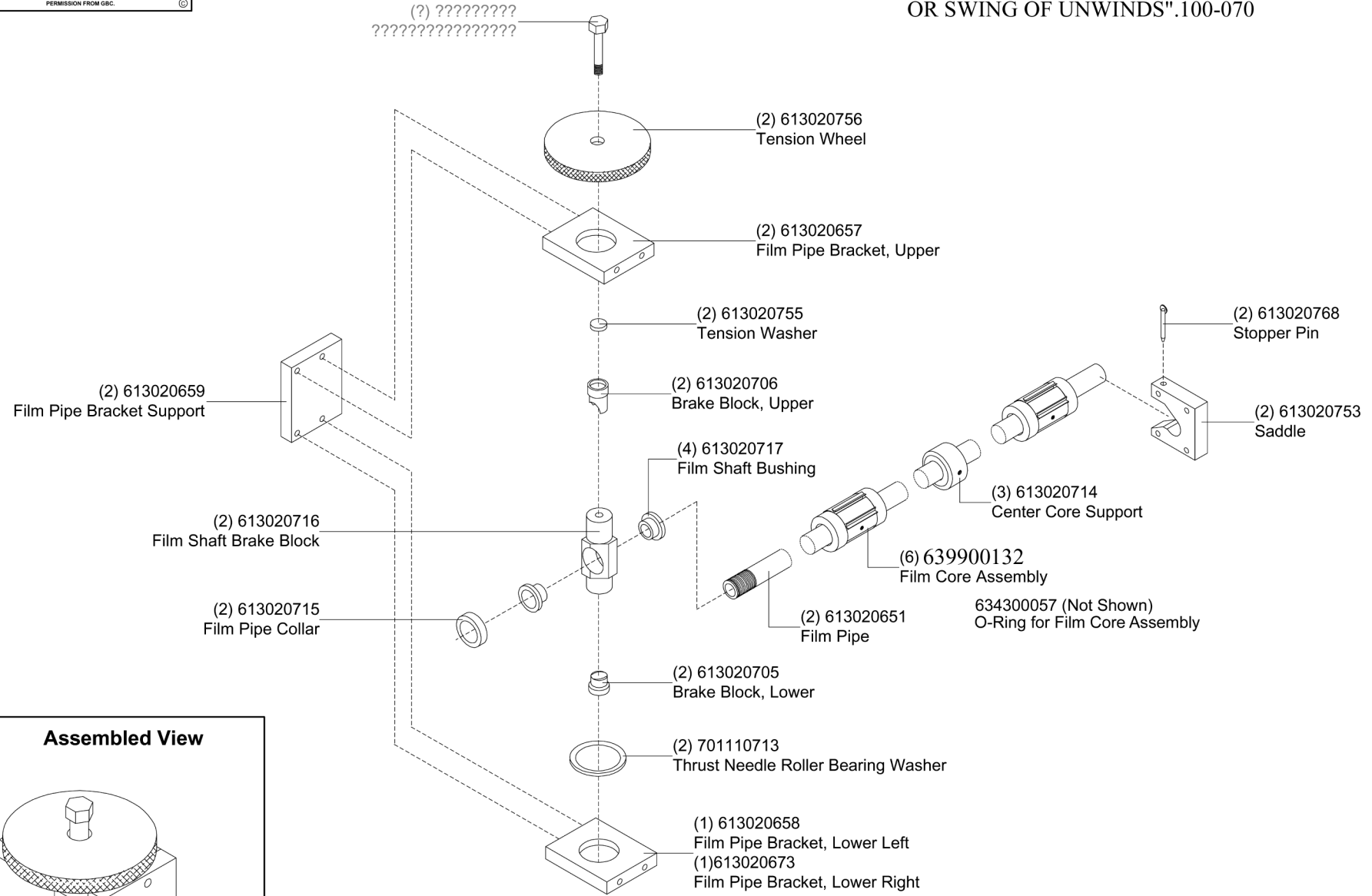
Lower Rewinder Sprocket Assembly

<small>This print is the property of GBC. The information thereon is restricted in confidence.</small>									
UNLESS OTHERWISE SPECIFIED									
TOLERANCE		4151 Anderson Road, DeForest, WI 53532							
TITLE :		Rewinder Sprocket Assembly GBC Orca 64							
DATE:		DRAWN BY:		DWG SCALE:		DWG :			
06/20/03		N/A		N/A		O64 - 015			
CHECKED BY: Sean Flood REVISION	DWG AS SHOWN	TOL.	FINISH TO BE						
	XX	±.164	125						
	X	±.050							
	XX	±.010							
	XXX	±.020	ANGLES	±.15					
XXXX	±.005								

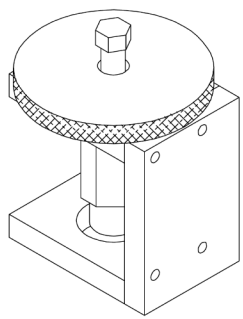
PROPRIETARY

GBC CLAIMS PROPRIETARY RIGHTS TO THE MATERIAL DISCLOSED ON THIS DRAWING. IT IS ISSUED IN CONFIDENCE FOR ENGINEERING INFORMATION ONLY AND SHALL NOT BE REPRODUCED, COPIED OR DISCLOSED IN WHOLE OR IN PART, OR USED FOR MANUFACTURE OR FOR ANY OTHER PURPOSE WITHOUT WRITTEN PERMISSION FROM GBC.

ANTI TIP BRACKET FOR UNWINDS "LIMIT TRAVEL OR SWING OF UNWINDS".100-070



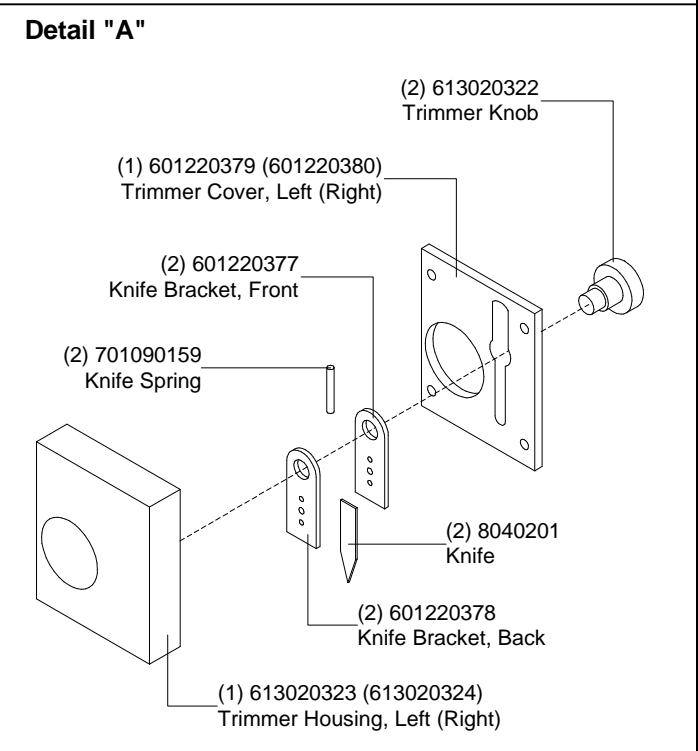
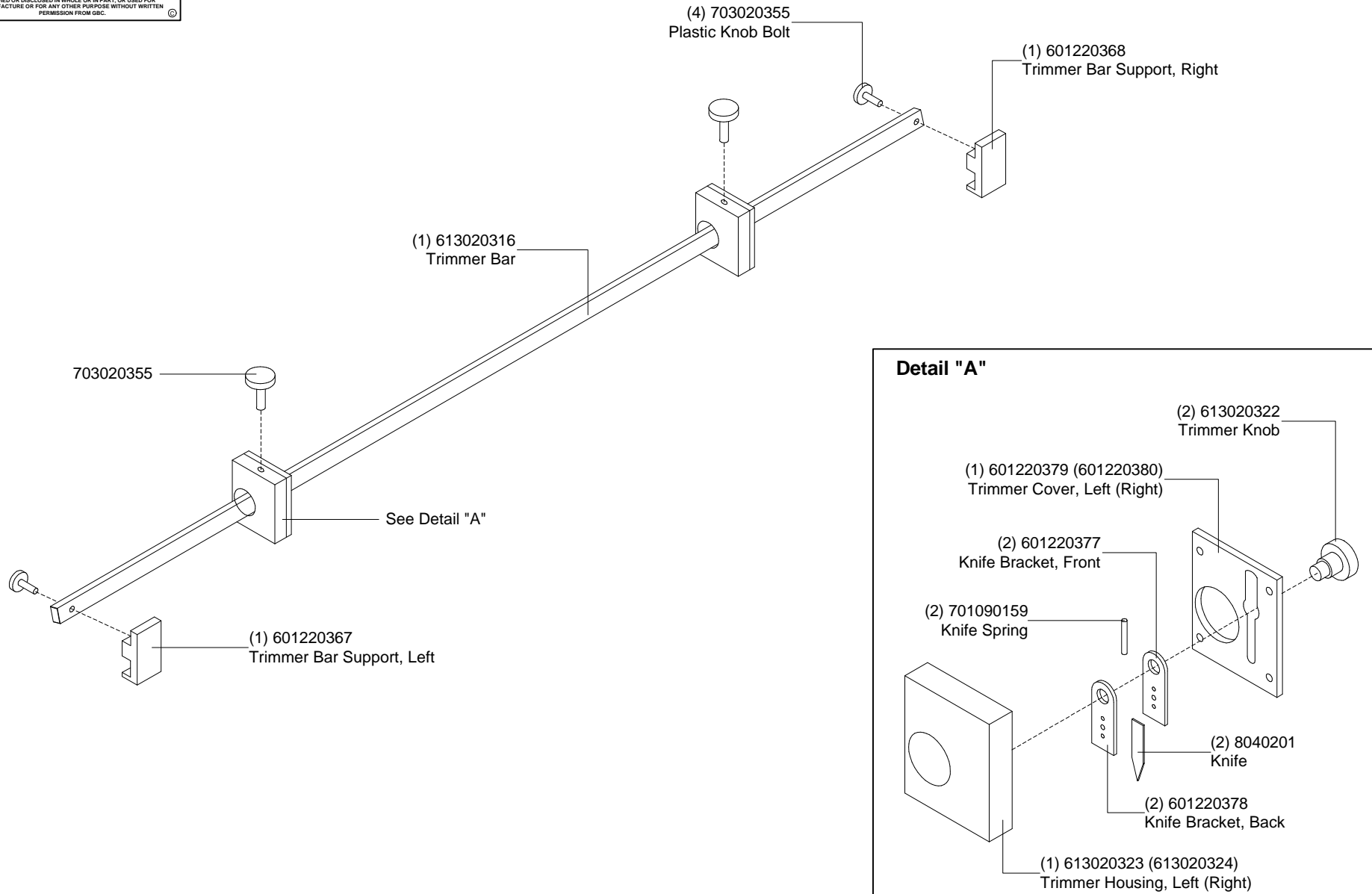
Assembled View



This print is the property of GBC. The information thereon is limited in confidence.									
UNLESS OTHERWISE SPECIFIED TOLERANCE					GBC Industrial & Print Finishing Group 4151 Anderson Road, DeForest, WI 53532				
DIM AS SHOWN	TOL.	FINISH TO BE	TITLE: Unwind Assembly GBC Orca 64						
XX	±.164	125	DATE: 05/16/03						
X	±.050		DRAWN BY: N/A						
XX	±.010		DWG SCALE: N/A						
XXX	±.020	ANGLES ±.10	DWG: O64 - 016						
XXXX	±.005								

PROPRIETARY

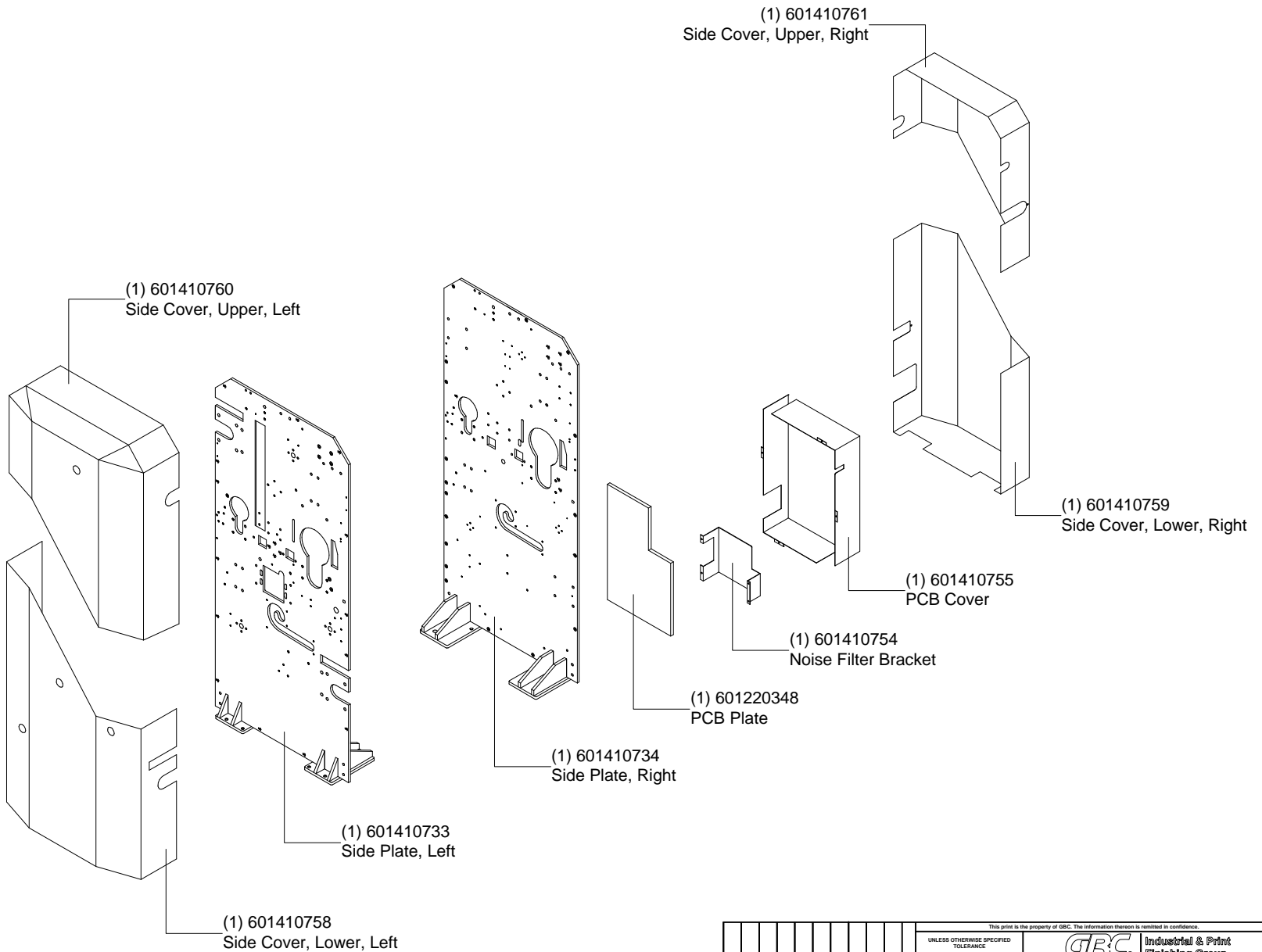
GBC CLAIMS PROPRIETARY RIGHTS TO THE MATERIAL DISCLOSED ON THIS DRAWING. IT IS ISSUED IN CONFIDENCE FOR ENGINEERING INFORMATION ONLY AND SHALL NOT BE REPRODUCED, COPIED OR DISCLOSED IN WHOLE OR IN PART, OR USED FOR MANUFACTURE OR FOR ANY OTHER PURPOSE WITHOUT WRITTEN PERMISSION FROM GBC.



UNLESS OTHERWISE SPECIFIED TOLERANCE			GBC Industrial & Print Finishing Group 4151 Anderson Road, DeForest, WI 53532	
DWG AS SHOWN	TOL.	FINISH TO BE	TITLE : In-Line Slitter Assembly GBC Orca 64	
XX	±.164	125	DATE:	06/20/03
X	±.050		DRAWN BY:	N/A
XX	±.010		DWG SCALE:	N/A
XXX	±.020	ANGLES	DWG :	O64 - 018
XXXX	±.005	±.1°		

PROPRIETARY

GBC CLAIMS PROPRIETARY RIGHTS TO THE MATERIAL DISCLOSED ON THIS DRAWING. IT IS ISSUED IN CONFIDENCE FOR ENGINEERING INFORMATION ONLY AND SHALL NOT BE REPRODUCED, COPIED OR DISCLOSED IN WHOLE OR IN PART, OR USED FOR MANUFACTURE OR FOR ANY OTHER PURPOSE WITHOUT WRITTEN PERMISSION FROM GBC.

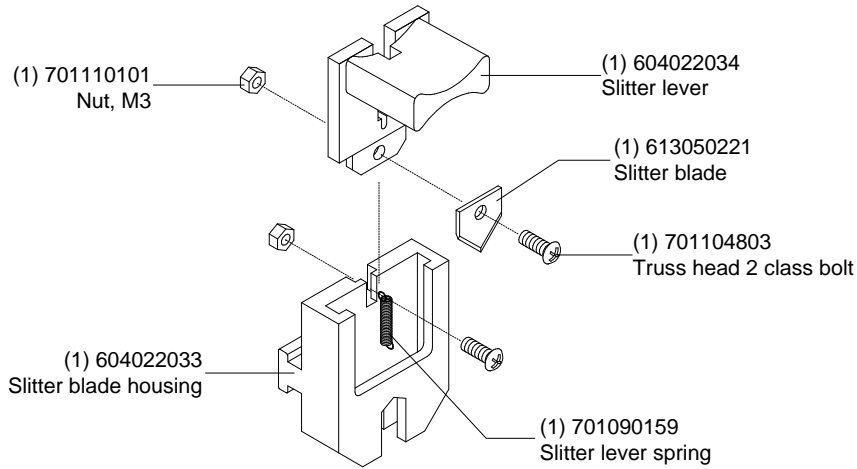


UNLESS OTHERWISE SPECIFIED TOLERANCE			THIS PRINT IS THE PROPERTY OF GBC. THE INFORMATION THEREON IS LIMITED IN CONFIDENCE.		
DIM. AS SHOWN	TOL.	FINISH TO BE	 Industrial & Print Finishing Group 4151 Anderson Road, DeForest, WI 53532		
XX	±.164	125			
X	±.050	125			
XX	±.070				
XXX	±.020	ANGLES			
XXXX	±.005	±.15°	TITLE : Cabinet and Cover Assembly GBC Orca 64 DATE: 06/20/03 DRAWN BY: N/A DWG SCALE: N/A DWG : O64 - 021		

PROPRIETARY

GBC CLAIMS PROPRIETARY RIGHTS TO THE MATERIAL DISCLOSED ON THIS DRAWING. IT IS ISSUED IN CONFIDENCE FOR ENGINEERING INFORMATION ONLY AND SHALL NOT BE REPRODUCED, COPIED OR DISCLOSED IN WHOLE OR IN PART, OR USED FOR MANUFACTURE OR FOR ANY OTHER PURPOSE WITHOUT WRITTEN PERMISSION FROM GBC.

Detail "A"



(1) 601410765 Blade Rail Bracket, Right

(1) 604036236 Blade Rail

(1) 706111049 Back Trimmer Assembly
(See Detail "A" for break down of parts)

(1) 601410766 Blade Rail Bracket, Left

UNLESS OTHERWISE SPECIFIED TOLERANCE				GBC Industrial & Print Finishing Group 4151 Anderson Road, DeForest, WI 53532	
DIM AS SHOWN	TOL.	FINISH TO BE	TITLE: Rear Slitter Assembly GBC Orca 64		
XX	±.164	125	DATE:	DRAWN BY:	DWG SCALE:
X	±.050		06/20/03	N/A	N/A
XX	±.010		DWG: O64 - 022		
XXX	±.020	ANGLES			
XXXX	±.005	±.1°			

PROPRIETARY

GBC CLAIMS PROPRIETARY RIGHTS TO THE MATERIAL DISCLOSED ON THIS DRAWING. IT IS ISSUED IN CONFIDENCE FOR ENGINEERING INFORMATION ONLY AND SHALL NOT BE REPRODUCED, COPIED OR DISCLOSED IN WHOLE OR IN PART, OR USED FOR MANUFACTURE OR FOR ANY OTHER PURPOSE WITHOUT WRITTEN PERMISSION FROM GBC.



(?) ??????????
 ???????????????????

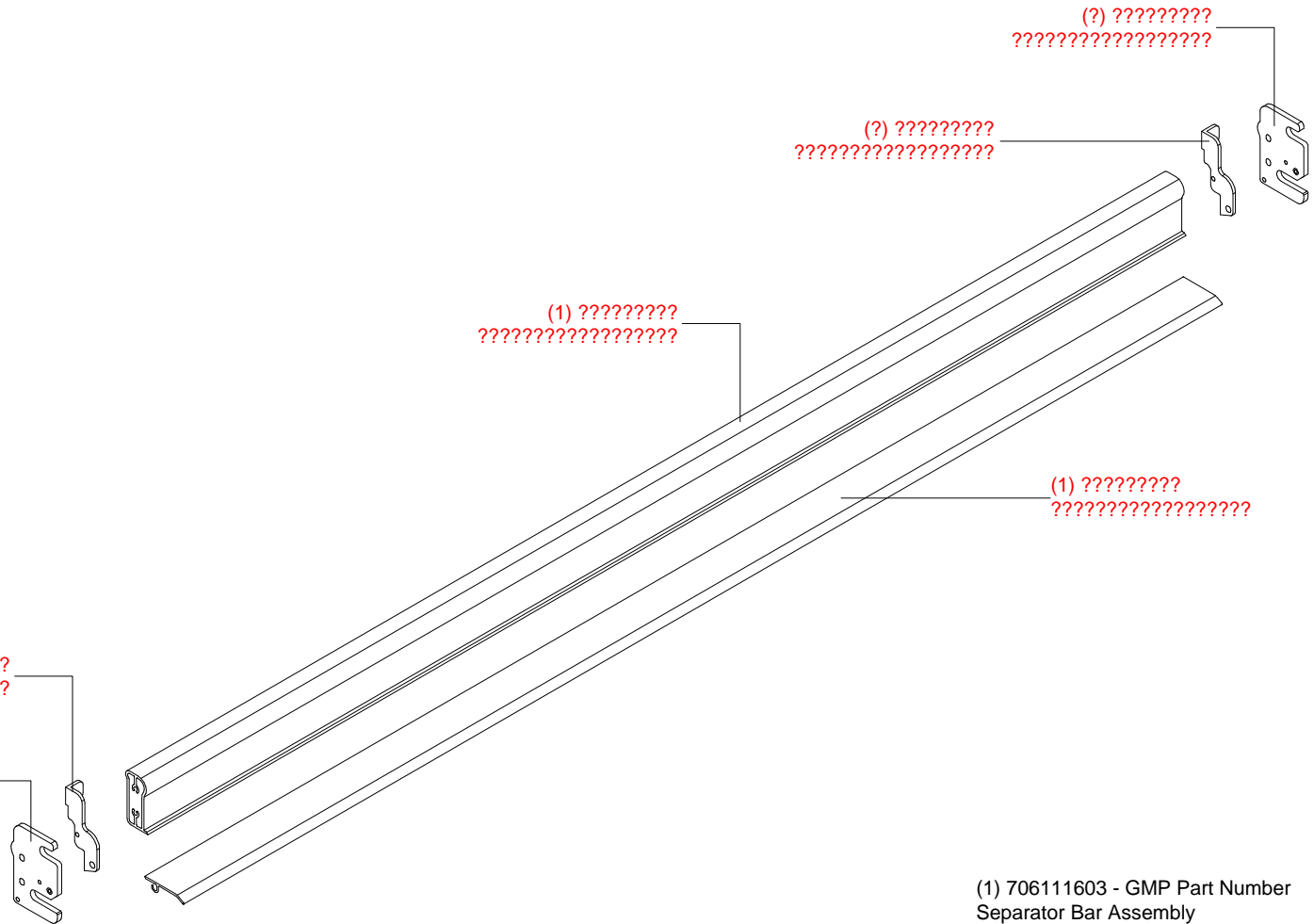
(?) ??????????
 ???????????????????

(1) ??????????
 ???????????????????

(1) ??????????
 ???????????????????

(?) ??????????
 ???????????????????

(?) ??????????
 ???????????????????



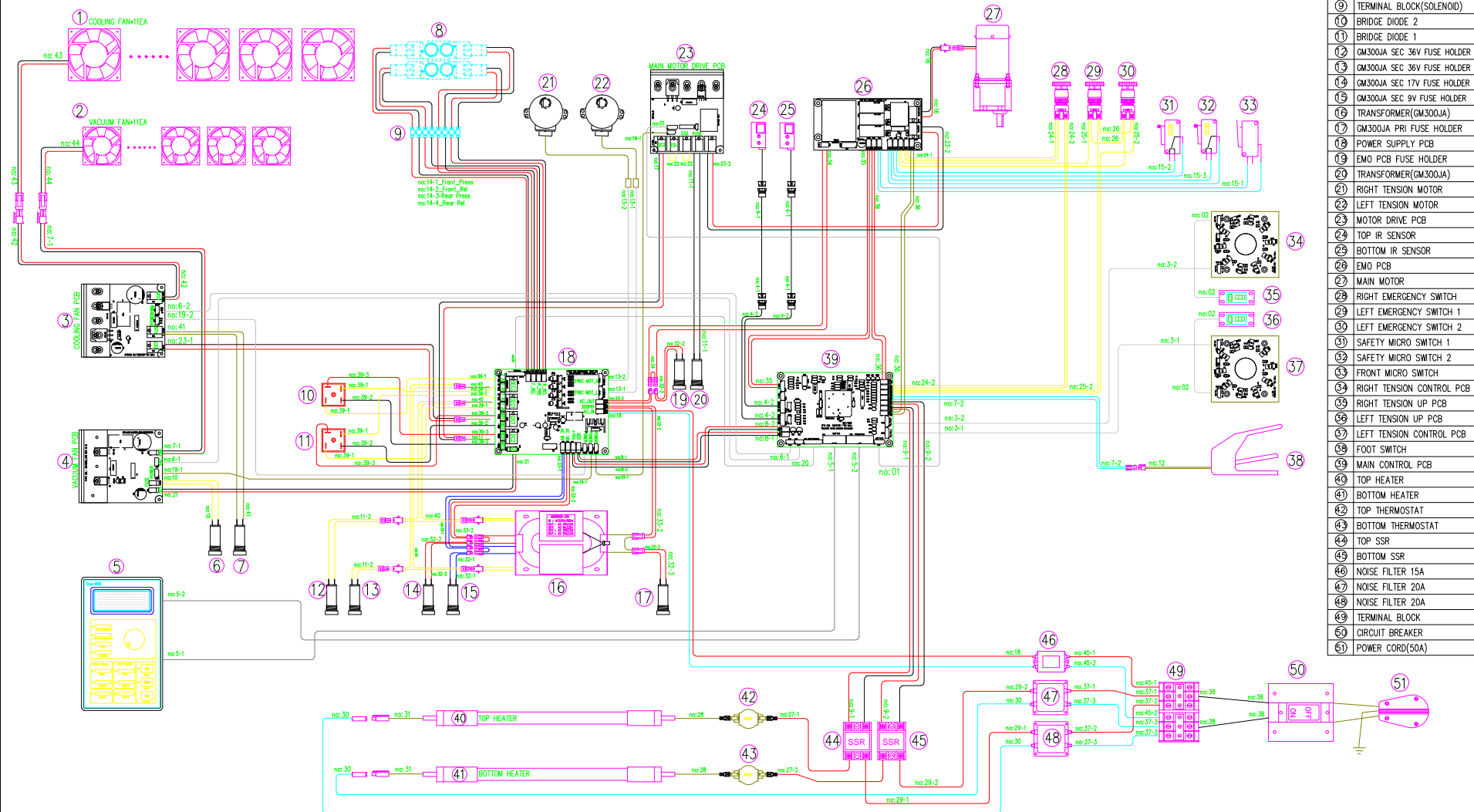
(1) 706111603 - GMP Part Number
 Separator Bar Assembly

(1) 2020588 - GBC Part Number
 Separator Bar Assembly

This print is the property of GBC. The information thereon is limited in confidence.									
		UNLESS OTHERWISE SPECIFIED TOLERANCE		GBC Industrial & Print Finishing Group 4151 Anderson Road, DeForest, WI 53532		TITLE : Separator Bar Assembly GBC Orca 64			
DIM. AS SHOWN	TOL.	FINISH TO BE							
XX	±.164	125							
X	±.050	✓							
XX	±.010								
XXX	±.020	ANGLES							
XXXX	±.005	±.1°							
CHECKED BY : Sean Flood		REVISION		DATE:	DRAWN BY :	DWG SCALE :	DWG :		
				06/20/03	N/A	N/A	O64 - 023		

PROPRIETARY

GBC CLAIMS PROPRIETARY RIGHTS TO THE MATERIAL DISCLOSED ON THIS DRAWING. IT IS ISSUED IN CONFIDENCE FOR ENGINEERING INFORMATION ONLY AND SHALL NOT BE REPRODUCED, COPIED OR DISCLOSED IN WHOLE OR IN PART, OR USED FOR MANUFACTURE OR FOR ANY OTHER PURPOSE WITHOUT WRITTEN PERMISSION FROM GBC.

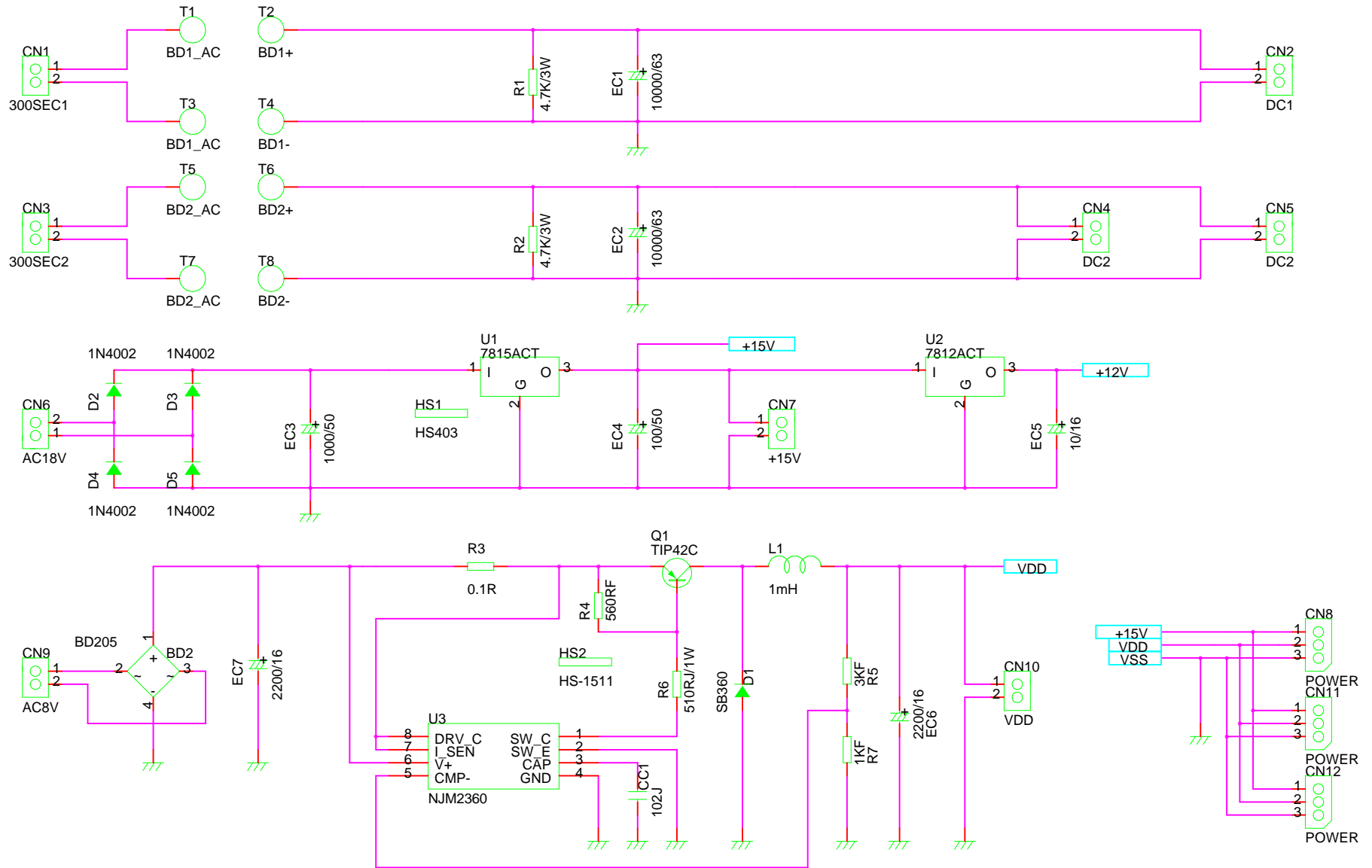


COMPONENT NAME
1 COOLING FAN
2 VACUUM FAN
3 COOLING FAN DRIVE PCB
4 VACUUM FAN DRIVE PCB
5 DISPLAY CONTROL PANEL
6 VACUUM FAN FUSE HOLDER
7 COOLING FAN FUSE HOLDER
8 SOLENOID VALVE
9 TERMINAL BLOCK(SOLENOID)
10 BRIDGE DIODE 2
11 BRIDGE DIODE 1
12 GM300A SEC 36V FUSE HOLDER
13 GM300A SEC 36V FUSE HOLDER
14 GM300A SEC 17V FUSE HOLDER
15 GM300A SEC 9V FUSE HOLDER
16 TRANSFORMER(GM300A)
17 GM300A PRI FUSE HOLDER
18 POWER SUPPLY PCB
19 EMO PCB FUSE HOLDER
20 TRANSFORMER(GM300A)
21 RIGHT TENSION MOTOR
22 LEFT TENSION MOTOR
23 MOTOR DRIVE PCB
24 TOP IR SENSOR
25 BOTTOM IR SENSOR
26 EMO PCB
27 MAIN MOTOR
28 RIGHT EMERGENCY SWITCH
29 LEFT EMERGENCY SWITCH 1
30 LEFT EMERGENCY SWITCH 2
31 SAFETY MICRO SWITCH 1
32 SAFETY MICRO SWITCH 2
33 FRONT MICRO SWITCH
34 RIGHT TENSION CONTROL PCB
35 RIGHT TENSION UP PCB
36 LEFT TENSION UP PCB
37 LEFT TENSION CONTROL PCB
38 FOOT SWITCH
39 MAIN CONTROL PCB
40 TOP HEATER
41 BOTTOM HEATER
42 TOP THERMOSTAT
43 BOTTOM THERMOSTAT
44 TOP SSR
45 BOTTOM SSR
46 NOISE FILTER 15A
47 NOISE FILTER 20A
48 NOISE FILTER 20A
49 TERMINAL BLOCK
50 CIRCUIT BREAKER
51 POWER CORD(50A)

THIS PRINT IS THE PROPERTY OF GBC. THE INFORMATION THEREON IS REMITTED IN CONFIDENCE.			
UNLESS OTHERWISE SPECIFIED TOLERANCE:		GBC Industrial & Print Finishing Group 4151 Anderson Road, DeForest, WI 53532	
DIM AS SHOWN	TOL.	FINISH TO BE	TITLE: Wiring Diagram GBC Orca 64
XX	±.164	125	DATE:
X	±.050	125	DRAWN BY:
XX	±.010	125	DWG SCALE:
XXX	±.020	ANGLE:	06/20/03
XXXX	±.005	15°	N/A
			064 - 024

PROPRIETARY

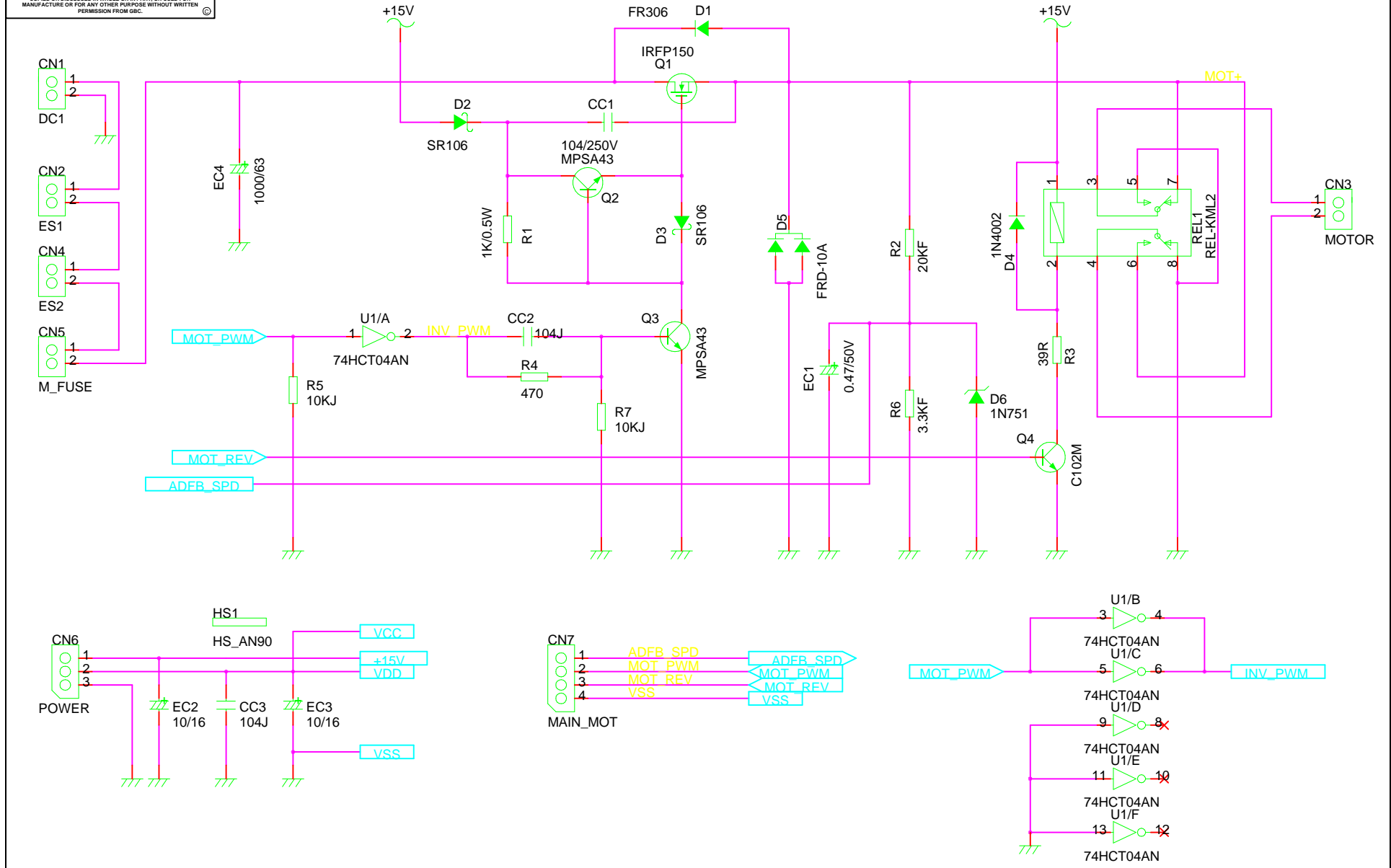
GBC CLAIMS PROPRIETARY RIGHTS TO THE MATERIAL DISCLOSED ON THIS DRAWING. IT IS ISSUED IN CONFIDENCE FOR ENGINEERING INFORMATION ONLY AND SHALL NOT BE REPRODUCED, COPIED OR DISCLOSED IN WHOLE OR IN PART, OR USED FOR MANUFACTURE OR FOR ANY OTHER PURPOSE WITHOUT WRITTEN PERMISSION FROM GBC.



UNLESS OTHERWISE SPECIFIED TOLERANCE:			THIS PRINT IS THE PROPERTY OF GBC. THE INFORMATION THEREON IS RESTRICTED IN CONFIDENCE.		
DWG. AS SHOWN	TOL.	FINISH TO BE	 4151 Anderson Road, DeForest, WI 53532		
XX	±.164	125			
X	±.050				
XX	±.010				
XXX	±.020	ANGLES	TITLE : DC Power Supply Circuit GBC Orca 64		
XXXX	±.005	±.15°	DATE: 06/20/03	DRAWN BY: N/A	DWG SCALE: N/A
CHECKED BY: Sean Flood			DWG: O64 - 025		

PROPRIETARY

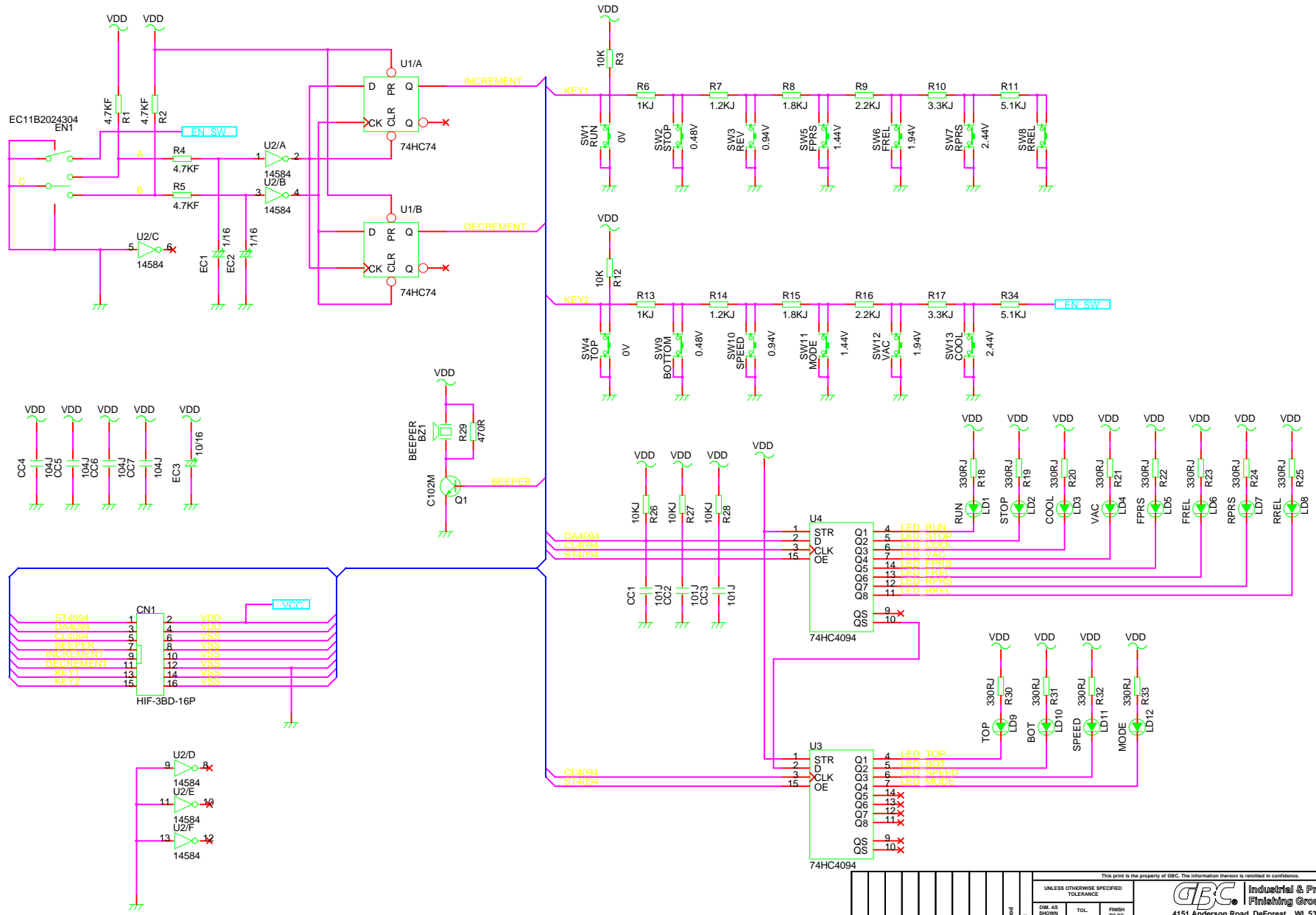
GBC CLAIMS PROPRIETARY RIGHTS TO THE MATERIAL DISCLOSED ON THIS DRAWING. IT IS ISSUED IN CONFIDENCE FOR ENGINEERING INFORMATION ONLY AND SHALL NOT BE REPRODUCED, COPIED OR DISCLOSED IN WHOLE OR IN PART, OR USED FOR MANUFACTURE OR FOR ANY OTHER PURPOSE WITHOUT WRITTEN PERMISSION FROM GBC.



UNLESS OTHERWISE SPECIFIED TOLERANCE:			THIS PRINT IS THE PROPERTY OF GBC. THE INFORMATION THEREON IS RESTRICTED IN CONFIDENCE.		
DIM. AS SHOWN	TOL.	FINISH TO BE	 Industrial & Print Finishing Group 4151 Anderson Road, DeForest, WI 53532 TITLE: Motor Drive Circuit GBC Orca 64 DATE: 06/20/03 DRAWN BY: N/A DWG SCALE: N/A DWG: O64 - 026		
XX	±.164	125			
X	±.050	125			
XX	±.010				
XXX	±.020	ANGLES ±1°			
XXXX	±.005				

PROPRIETARY

GBC CLAIMS PROPRIETARY RIGHTS TO THE MATERIAL DISCLOSED ON THIS DRAWING. IT IS ISSUED IN CONFIDENCE FOR ENGINEERING INFORMATION ONLY AND SHALL NOT BE REPRODUCED, COPIED OR DISCLOSED IN WHOLE OR IN PART, OR USED FOR MANUFACTURE OR FOR ANY OTHER PURPOSE WITHOUT WRITTEN PERMISSION FROM GBC.

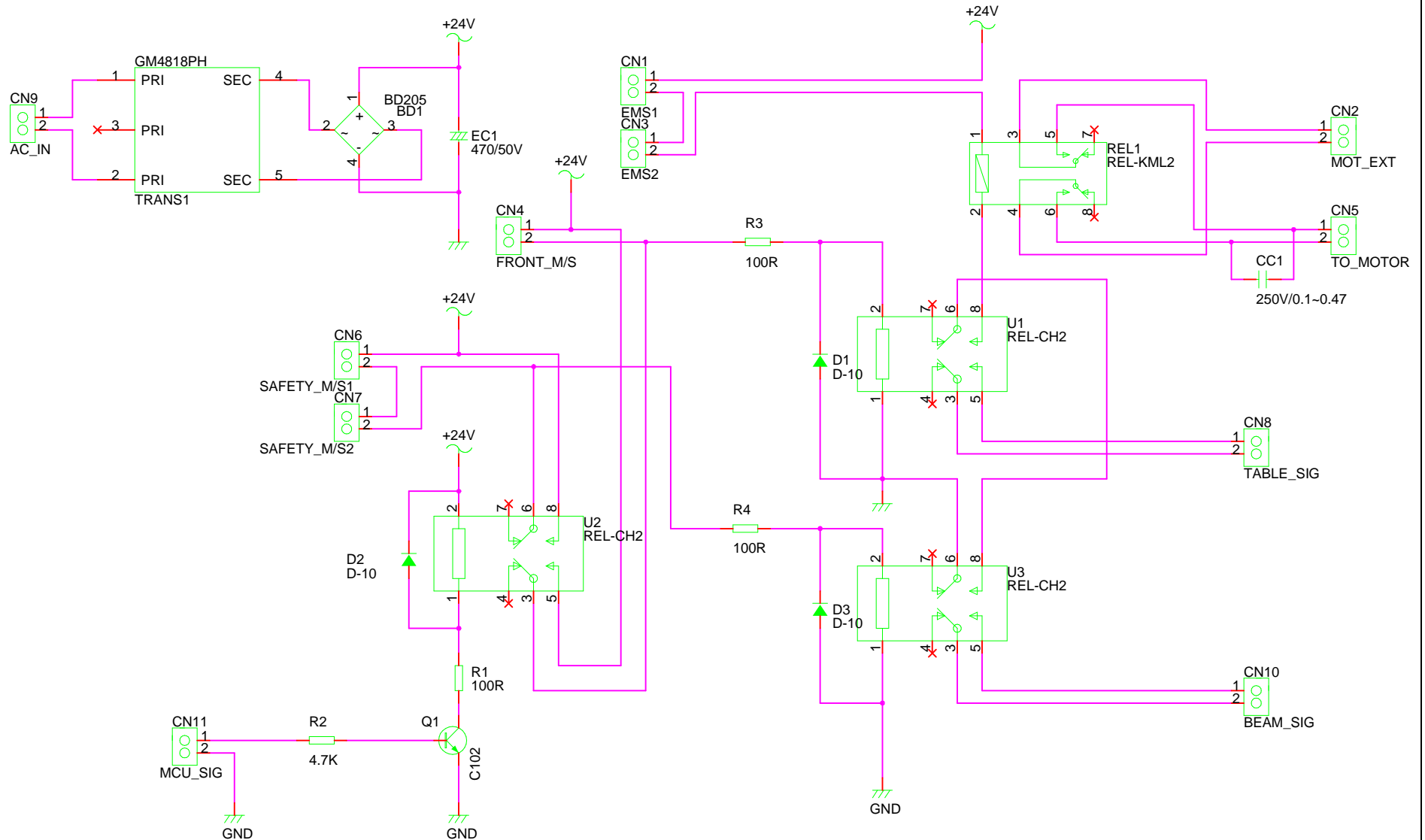


This print is the property of GBC. The information thereon is retained in confidence.

UNLESS OTHERWISE SPECIFIED TOLERANCE:			GBC Industrial & Print Finishing Group 4151 Anderson Road, DeForest, WI 53532		
DWG. AS SHOWN	TOL.	FINISH TO BE	TITLE: Display Panel Circuit GBC Orca 64 DATE: 06/20/03 DRAWN BY: N/A DWG SCALE: N/A DWG: O64 - 028		
XX	±.164	125			
X	±.050				
XX	±.010				
XXX	±.020	ANGLES 1:12			
XXXX	±.005				

PROPRIETARY

GBC CLAIMS PROPRIETARY RIGHTS TO THE MATERIAL DISCLOSED ON THIS DRAWING. IT IS ISSUED IN CONFIDENCE FOR ENGINEERING INFORMATION ONLY AND SHALL NOT BE REPRODUCED, COPIED OR DISCLOSED IN WHOLE OR IN PART, OR USED FOR MANUFACTURE OR FOR ANY OTHER PURPOSE WITHOUT WRITTEN PERMISSION FROM GBC.

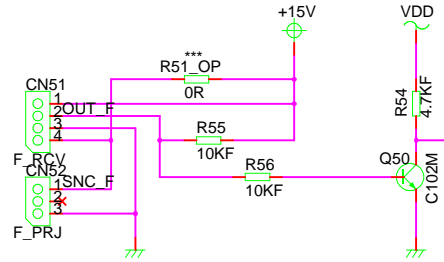


UNLESS OTHERWISE SPECIFIED TOLERANCE			THIS PRINT IS THE PROPERTY OF GBC. THE INFORMATION THEREON IS RESTRICTED IN CONFIDENCE.		
DWG. AS SHOWN	TOL.	FINISH TO BE	 Industrial & Print Finishing Group 4151 Anderson Road, DeForest, WI 53532		
XX	±.164	125			
X	±.050	✓			
XX	±.010				
XXX	±.020	ANGLES			
XXXX	±.005	±1°	TITLE : Safety Relay Board GBC Orca 64 DATE: 06/20/03 DRAWN BY: N/A DWG SCALE: N/A DWG: O64 - 029		

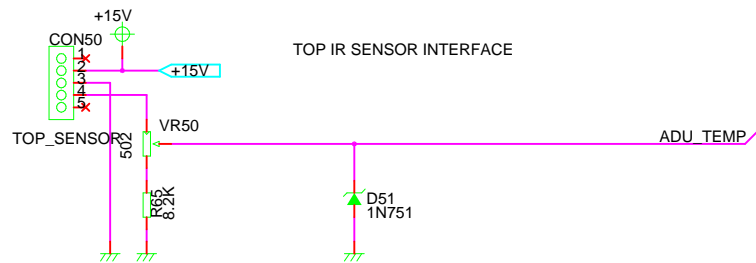
PROPRIETARY

GBC CLAIMS PROPRIETARY RIGHTS TO THE MATERIAL DISCLOSED ON THIS DRAWING. IT IS ISSUED IN CONFIDENCE FOR ENGINEERING INFORMATION ONLY AND SHALL NOT BE REPRODUCED, COPIED OR DISCLOSED IN WHOLE OR IN PART, OR USED FOR MANUFACTURE OR FOR ANY OTHER PURPOSE WITHOUT WRITTEN PERMISSION FROM GBC.

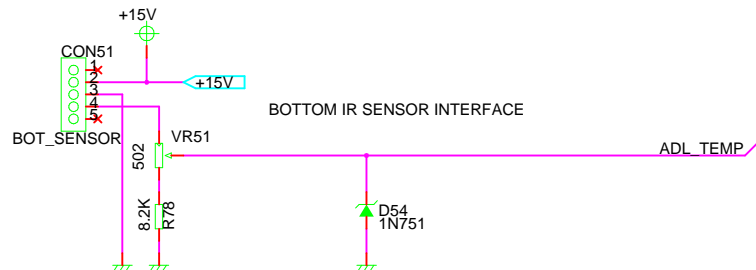
SAFETY SENSOR INTERFACE



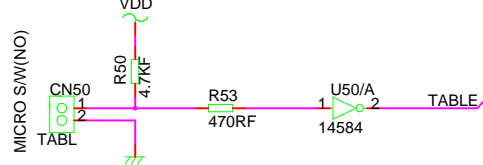
TOP IR SENSOR INTERFACE



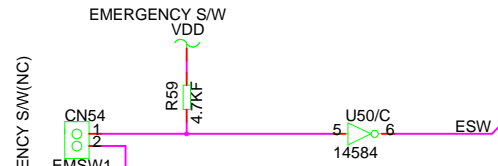
BOTTOM IR SENSOR INTERFACE



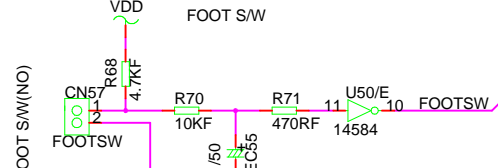
FRONT TABLE MICRO S/W



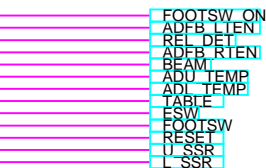
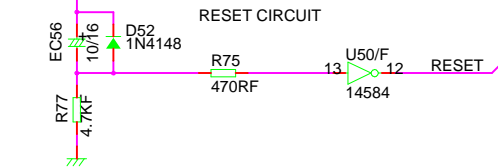
EMERGENCY S/W



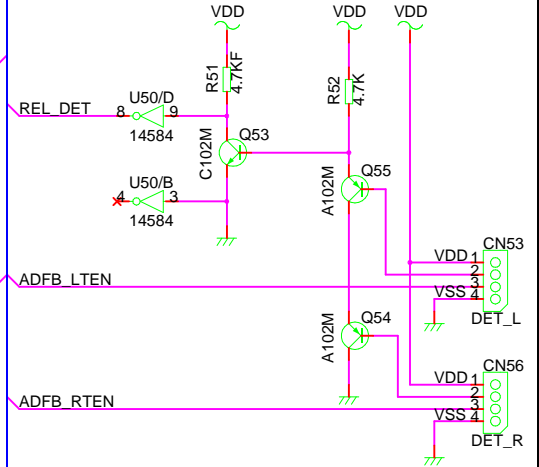
FOOT S/W



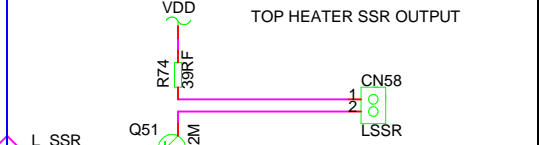
RESET CIRCUIT



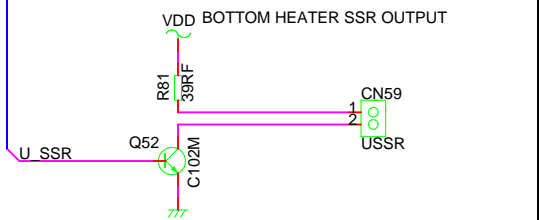
(LEFT REL & RIGHT) == HIGH



TOP HEATER SSR OUTPUT



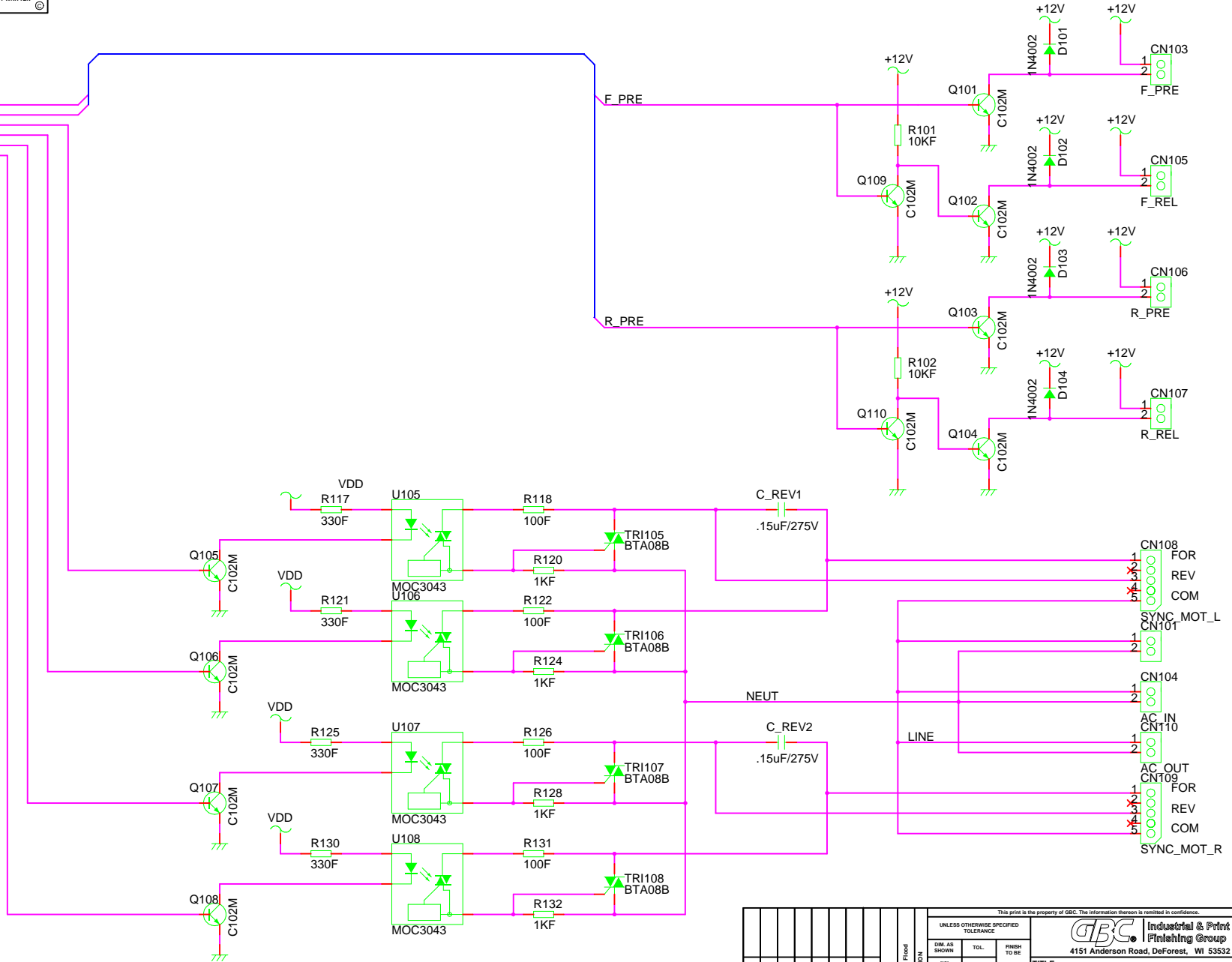
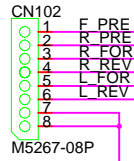
VDD BOTTOM HEATER SSR OUTPUT



UNLESS OTHERWISE SPECIFIED TOLERANCE:			THIS PRINT IS THE PROPERTY OF GBC. THE INFORMATION THEREON IS RESTRICTED IN CONFIDENCE.		
DIM AS SHOWN	TOL.	FINISH TO BE	 Industrial & Print Finishing Group 4151 Anderson Road, DeForest, WI 53532 TITLE: Sensor Interface Circuit GBC Orca 64 DATE: 06/20/03 DRAWN BY: N/A DWG SCALE: N/A DWG: O64 - 030		
XX	±.164	125			
X	±.050				
XX	±.010				
XXX	±.020	ANGLES			
XXXX	±.005	±.1°			

PROPRIETARY

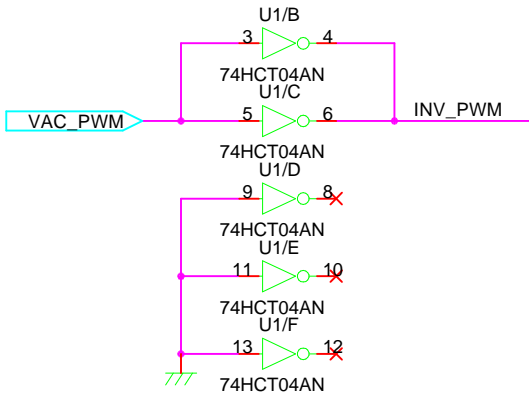
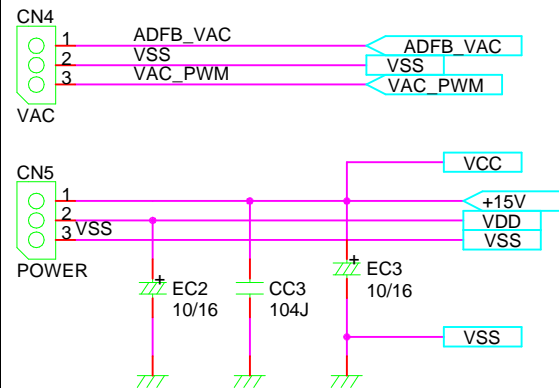
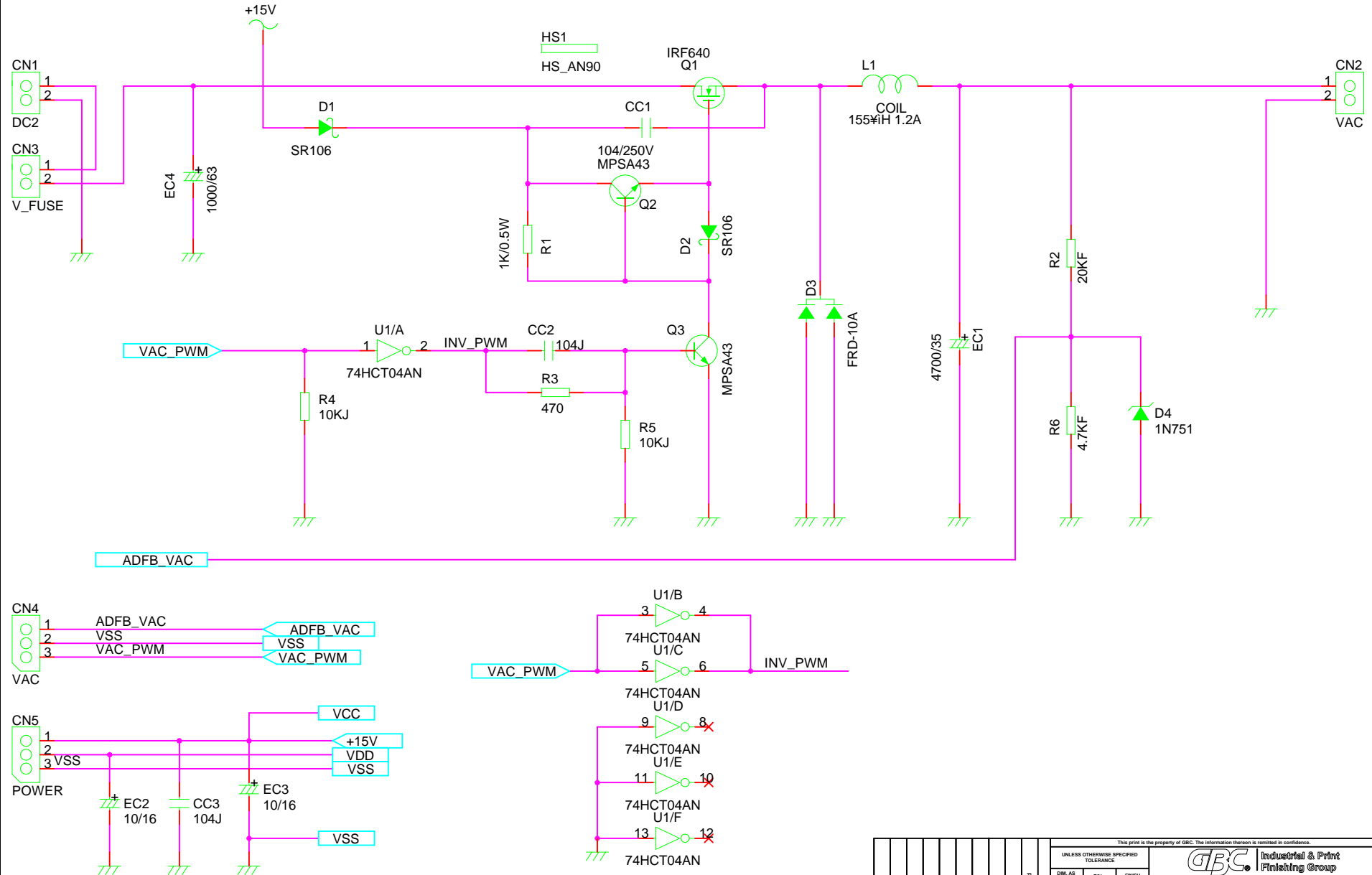
GBC CLAIMS PROPRIETARY RIGHTS TO THE MATERIAL DISCLOSED ON THIS DRAWING. IT IS ISSUED IN CONFIDENCE FOR ENGINEERING INFORMATION ONLY AND SHALL NOT BE REPRODUCED, COPIED OR DISCLOSED IN WHOLE OR IN PART, OR USED FOR MANUFACTURE OR FOR ANY OTHER PURPOSE WITHOUT WRITTEN PERMISSION FROM GBC.



UNLESS OTHERWISE SPECIFIED TOLERANCE			THIS PRINT IS THE PROPERTY OF GBC. THE INFORMATION THEREON IS RELAYED IN CONFIDENCE.		
DWG. AS SHOWN	TOL.	FINISH TO BE	 Industrial & Print Finishing Group 4151 Anderson Road, DeForest, WI 53532		
XX	±.164	125			
X	±.050				
XX	±.010				
XXX	±.020	ANGLES			
XXXX	±.005	±.125	TITLE: Roller Tension Control Circuit GBC Orca 64 DATE: 06/20/03 DRAWN BY: N/A DWG SCALE: N/A DWG: O64 - 031		

PROPRIETARY

GBC CLAIMS PROPRIETARY RIGHTS TO THE MATERIAL DISCLOSED ON THIS DRAWING. IT IS ISSUED IN CONFIDENCE FOR ENGINEERING INFORMATION ONLY AND SHALL NOT BE REPRODUCED, COPIED OR DISCLOSED IN WHOLE OR IN PART, OR USED FOR MANUFACTURE OR FOR ANY OTHER PURPOSE WITHOUT WRITTEN PERMISSION FROM GBC.



UNLESS OTHERWISE SPECIFIED TOLERANCE:		FINISH TO BE		DATE: 06/20/03		DRAWN BY: N/A		DWG SCALE: N/A		DWG: O64 - 033	
DIM AS SHOWN	TOL.		125	DATE: 06/20/03		DRAWN BY: N/A		DWG SCALE: N/A		DWG: O64 - 033	
XX	±.164		✓	DATE: 06/20/03		DRAWN BY: N/A		DWG SCALE: N/A		DWG: O64 - 033	
X	±.050			DATE: 06/20/03		DRAWN BY: N/A		DWG SCALE: N/A		DWG: O64 - 033	
XX	±.010			DATE: 06/20/03		DRAWN BY: N/A		DWG SCALE: N/A		DWG: O64 - 033	
XXX	±.020	ANGLES	±15°	DATE: 06/20/03		DRAWN BY: N/A		DWG SCALE: N/A		DWG: O64 - 033	
XXXX	±.005			DATE: 06/20/03		DRAWN BY: N/A		DWG SCALE: N/A		DWG: O64 - 033	

GBC Industrial & Print Finishing Group
4151 Anderson Road, DeForest, WI 53532

TITLE: Vacuum Fan Driver Circuit
GBC Orca 64



General Binding Corporation
One GBC Plaza
Northbrook, IL 60062-4195
