

Orca II
Illustrated Parts Booklet
(000 - 001)

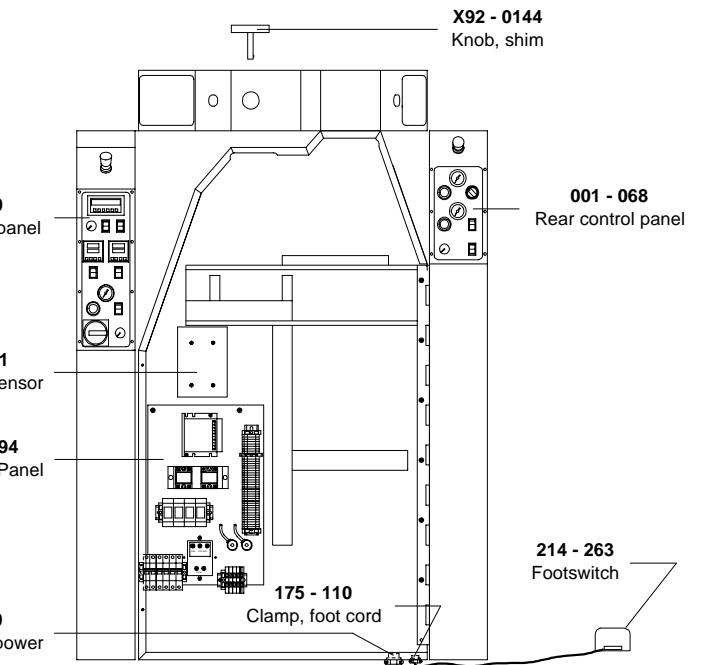
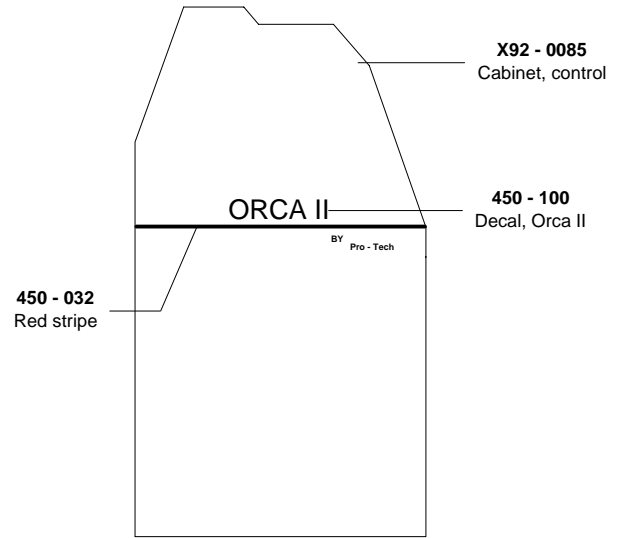
Available Options ;

001 - 052 (Vacuum table)

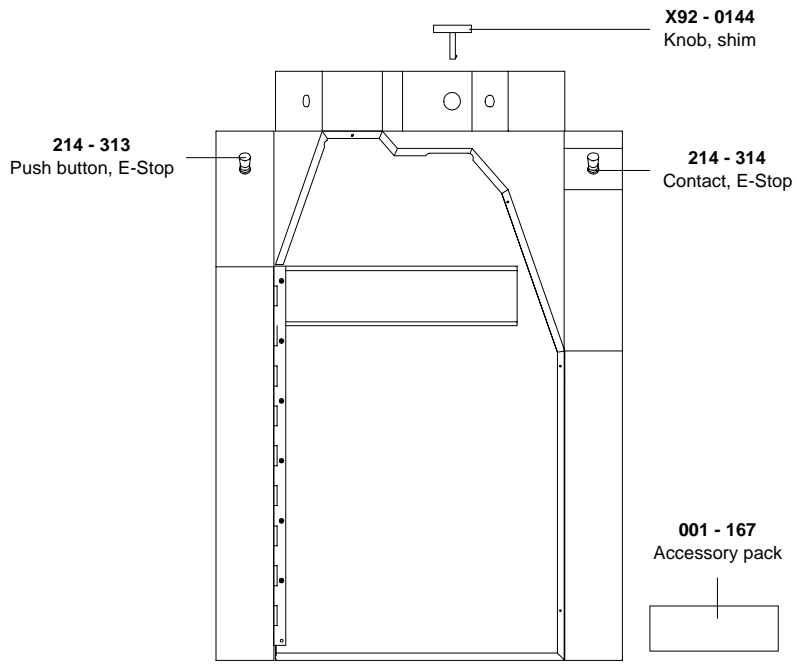
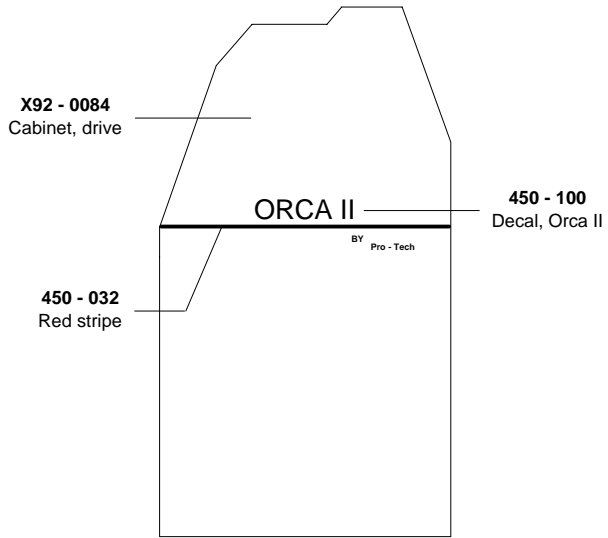
001 - 084 (Outfeed table)

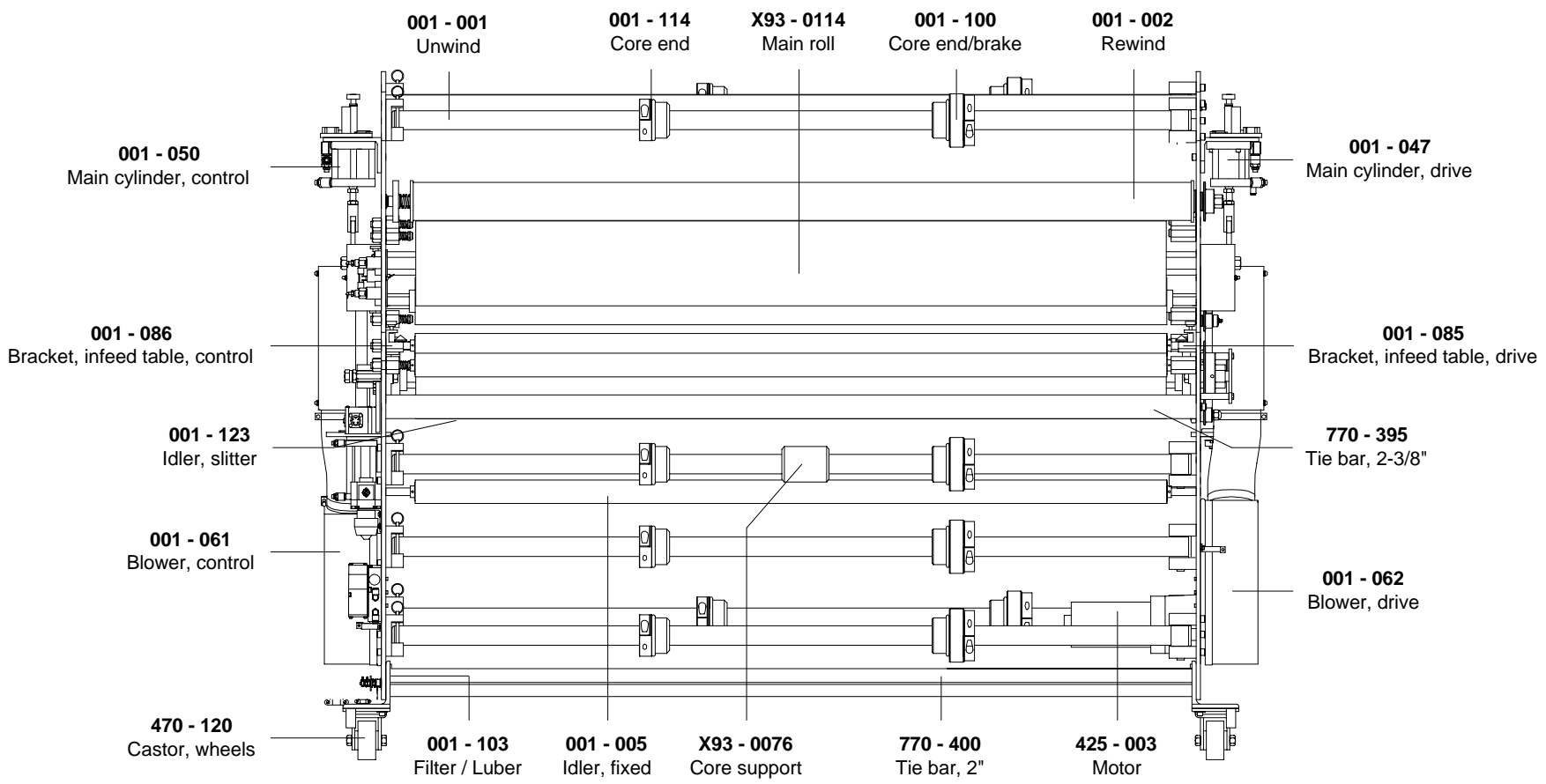
001 - 122 (Infeed Slitters)

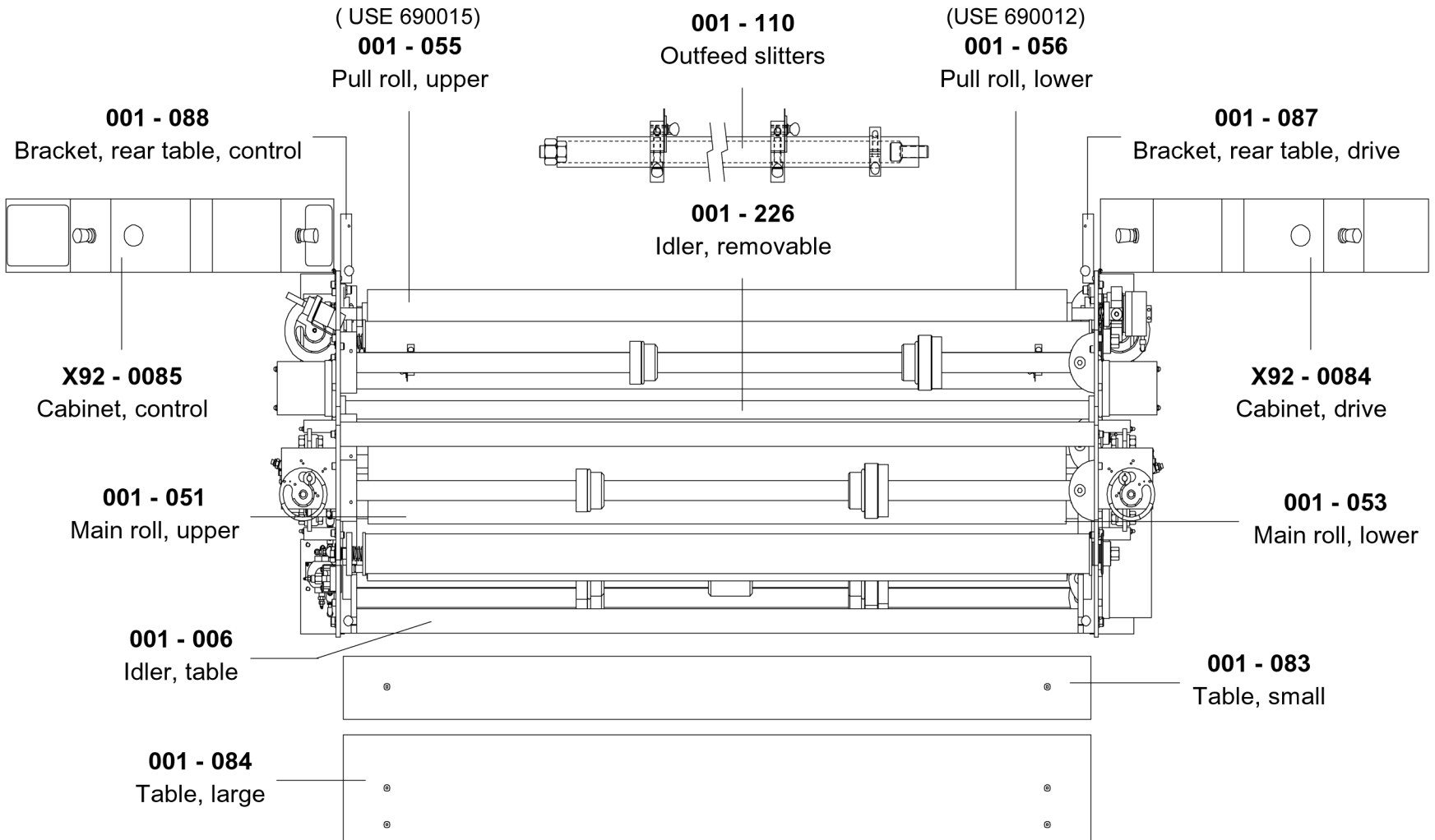
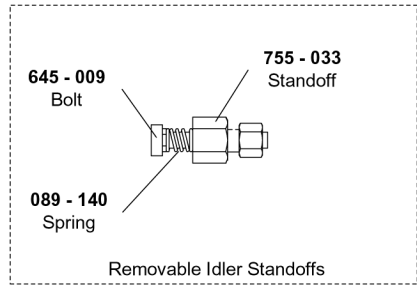
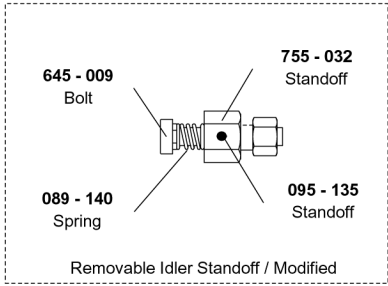
Control Side



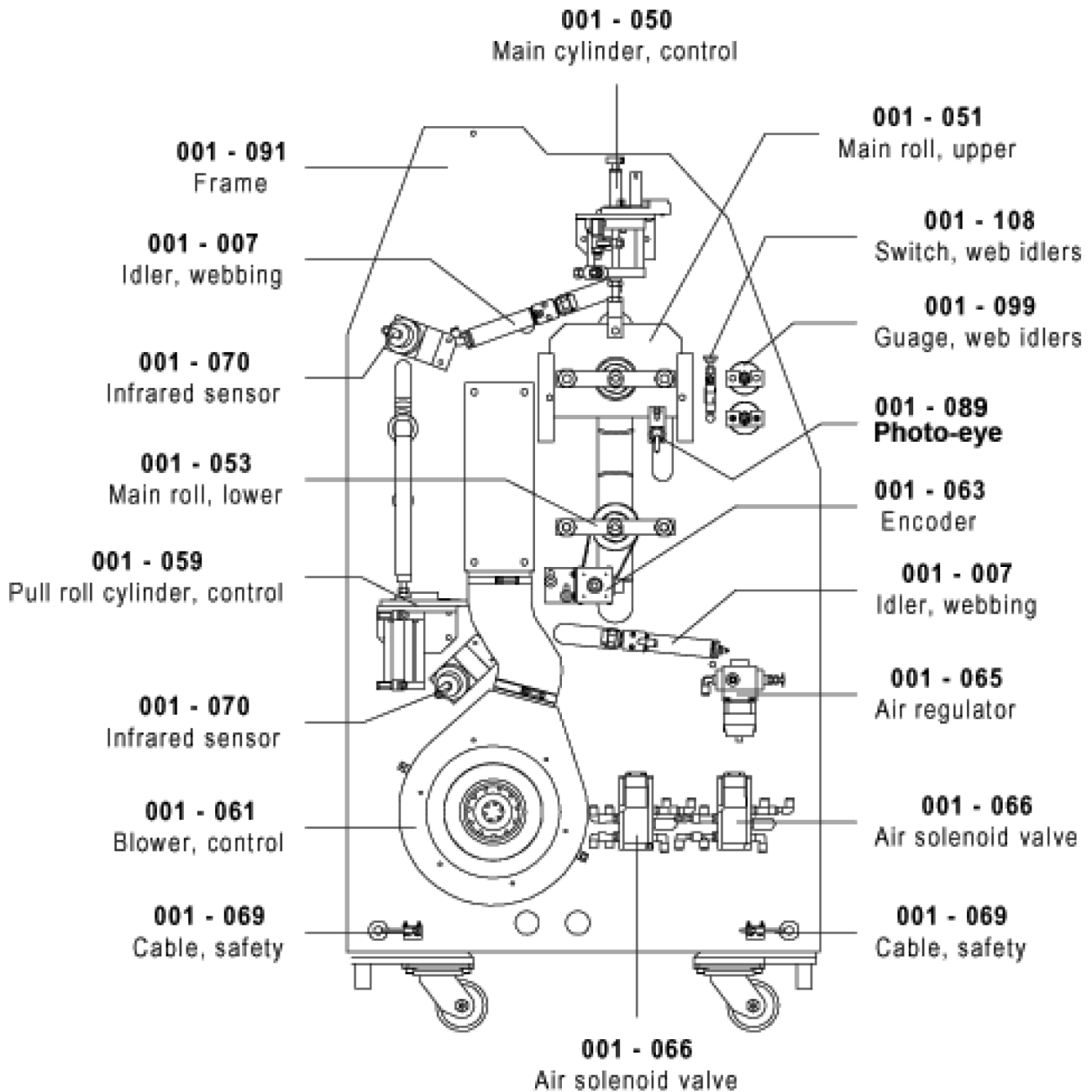
Drive Side

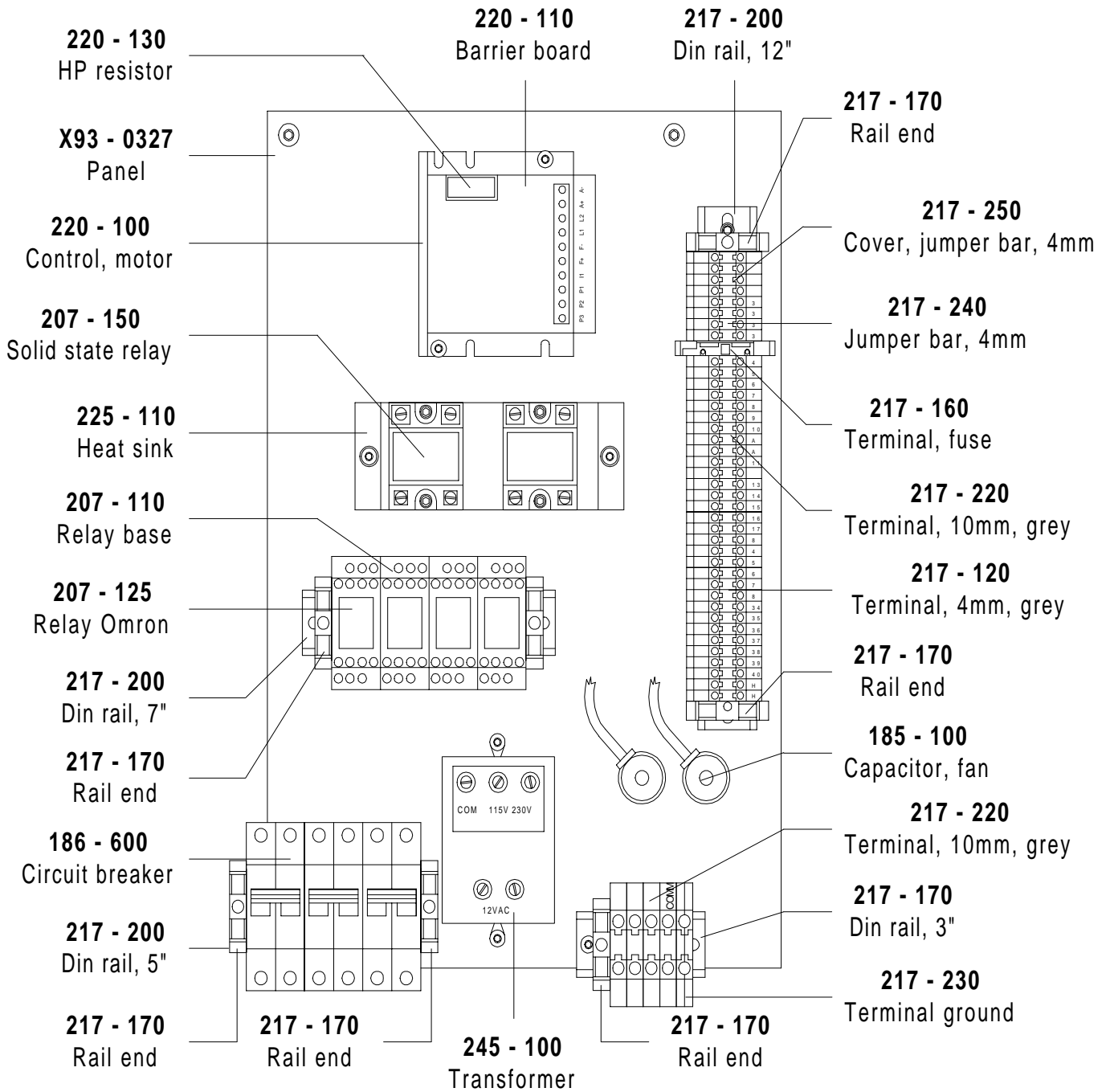




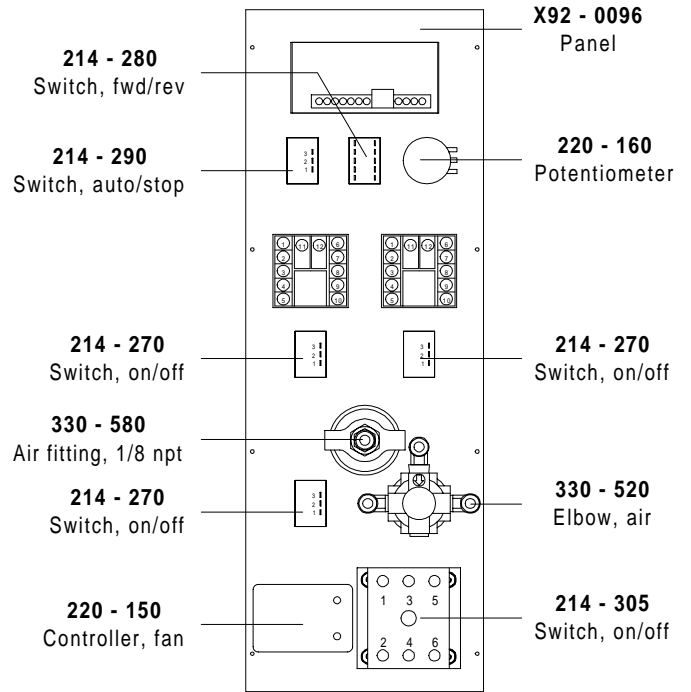
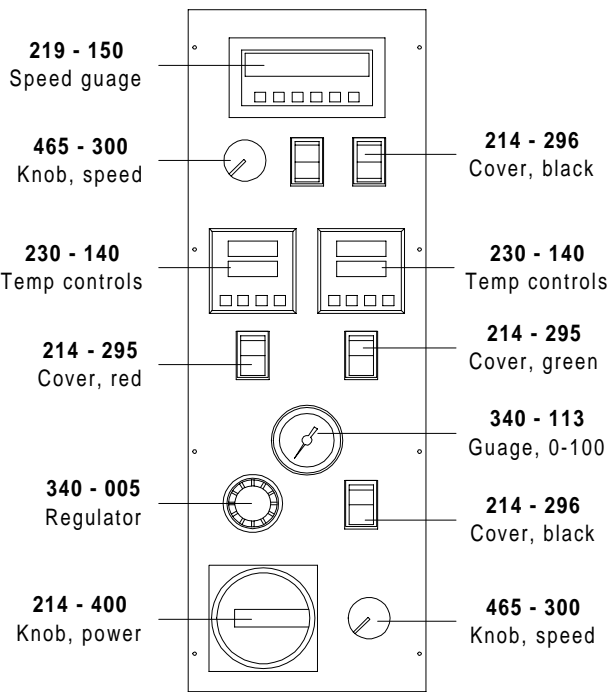


HEATER 189-290 : HEATER WIRE 10 GAUGE 600 V , UL APPROVED,WIRE TYPE TEW 105 C
HOME DEPOT STOCKS THIS PART

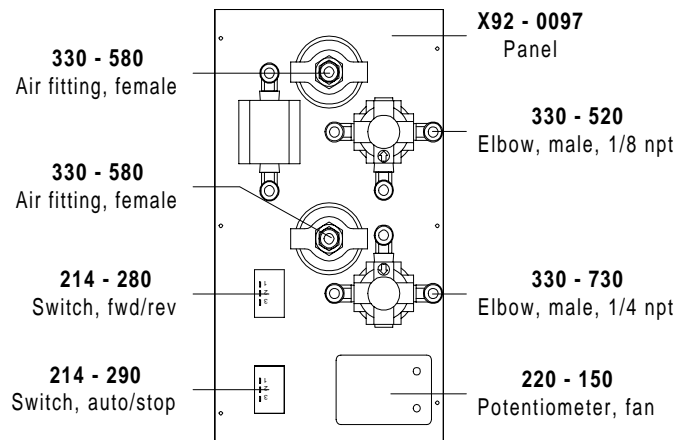
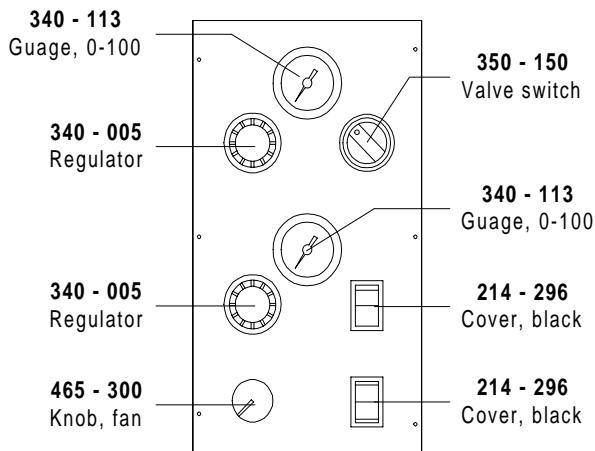


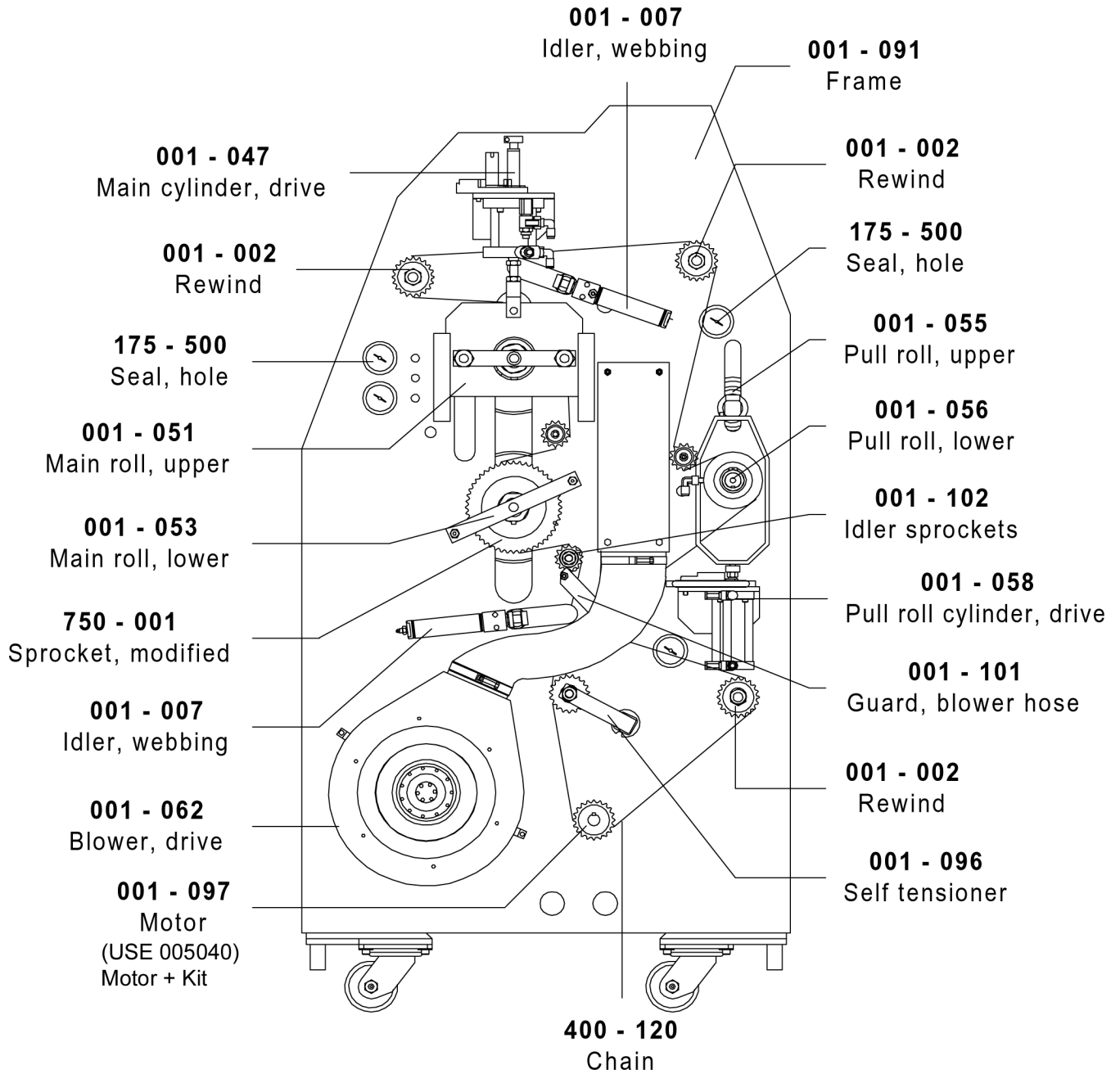


001 - 090 Front Control Panel



001 - 068 Rear Control Panel

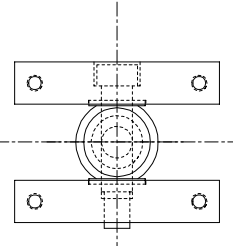
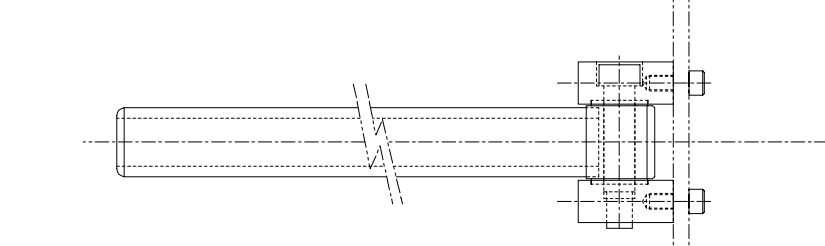
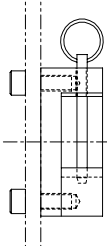
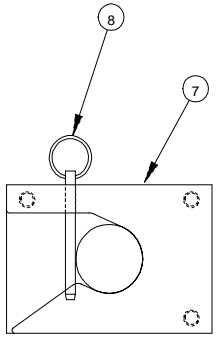
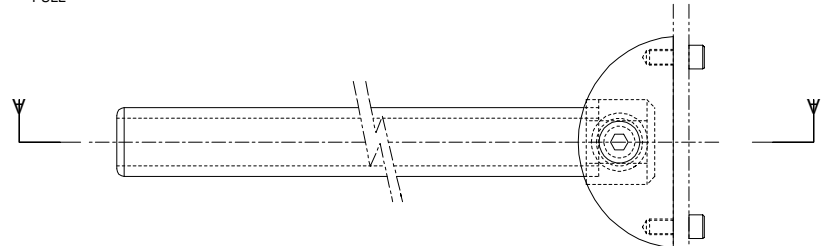
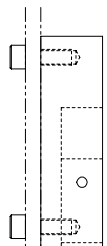
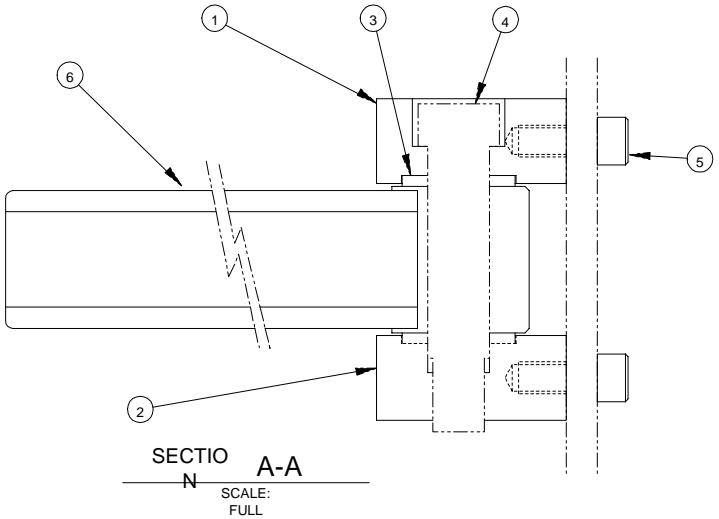




MASTER LINK 400 -140
HALF LINK 400 - 130

CHAIN IS ORDERED BY THE INCH, NEED 101.5" TO 102.0". CHAIN P/N # 400-120

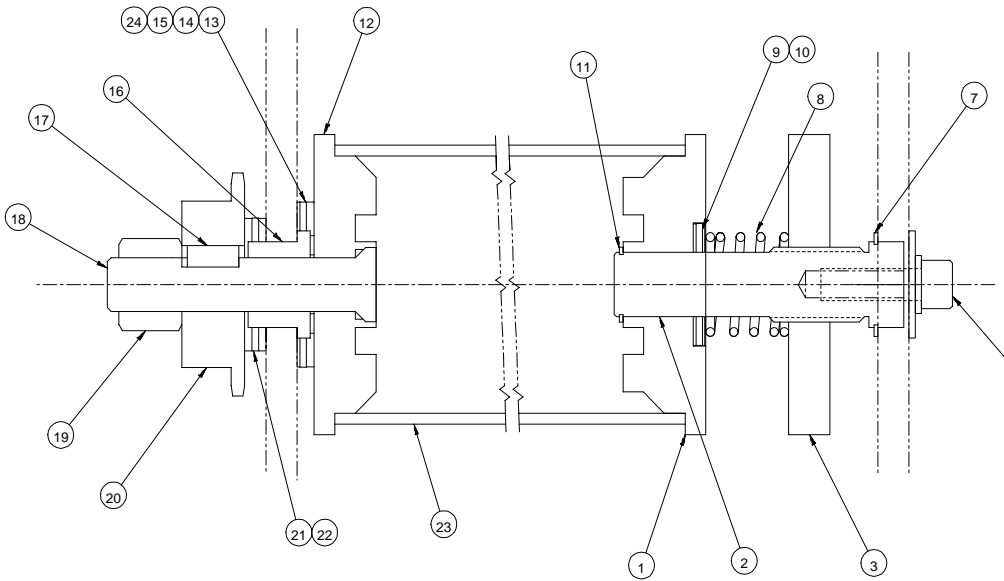
REQ'D	DESCRIPTION	PART NO.	ITEM
1	BRKT,UNWIND,UPPER	X92-0068	1
1	BRKT,UNWIND,BOTTOM	X92-0069	2
2	WASHER, THRUST	040200	3
1	.75 X 2-1/2 SHOULDER BOLT	-	4
7	3/8-16 X 1 LG SHCS	-	5
1	SHAFT, UNWIND	X92-0172	6
1	SADDLE, SHAFT POCKET	X92-0128	7
1	PIN, PULL	086-100	8



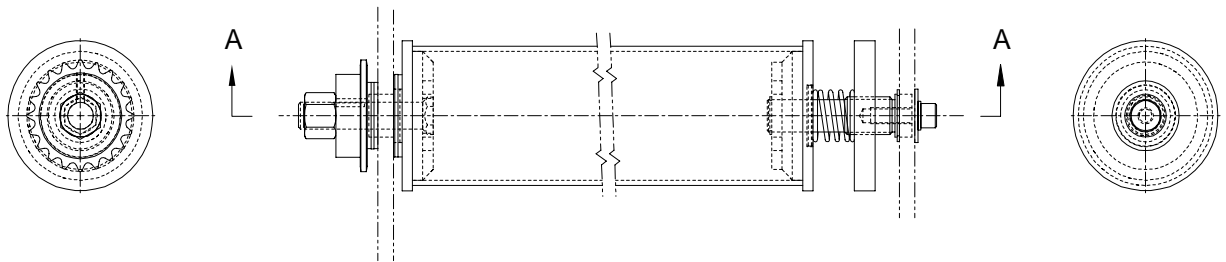
-001 ASSEMBL
SCALE: 1/2

UNLESS OTHERWISE SPECIFIED TOLERANCE				Pro-Tech Engineering 21176 S. Douglas Rd. Mead, WA 98048 Phone: (206) 246-0844 Fax: (206) 246-0855	
FR. AD.	TOL.	FINISH	DATE	DRAWN BY	DWG SCALE
3/16	F 1/64	✓	1-24-94	P.R.	C2
1/8	F .002				
1/4	F .002				
3/16	F .010	ANGLES			
3/32	F .005	P 15			
TITLE: UNWIND, 1-5/8 DIA				Dwg 001-001	
O II				001-001	

REQ'D	DESCRIPTION	PART NO.	ITEM
1	PLUG, CLUTCH, ORCA I, II	X92-0112	1
1	SHAFT, REWIND, STANDOFF	X92-0113	2
1	NOB, CLUTCH, KNURLED	625-007	3
1	3/8-16 X 1 LG SHCS	-	4
1	3/8 FLATWASHER	-	5
1	3/8 LOCKWASHER	-	6
1	SNAP RING, 1" SHAFT	090-140	7
1	SPRING , 1" ID X 1-3/8 LG	089-200	8
2	WASHER, THRUST, .030 THK	032-242	9
1	BEARING, THRUST	032-390	10
1	SNAP RING, 3/4 SHAFT, EXTERNAL	090-135	11
1	PLUG, CLUTCH DRIVE	X92-0111	12
1	WASHER, THRUST, .090 THK	032-420	13
1	WASHER, THRUST .030 THK	032-410	14
1	BEARING, THRUST	032-400	15
1	BUSHING, BOST-BRONZE	040-003	16
1	KEY, 1/4 X 1/4 X 5/8 LG	-	17
1	BOLT, CLUTCH DRIVE, ORCA I, II	645-008	18
1	LOCK NUT, 5/8-11 HEX	-	19
1	SPROCKET, 26 TOOTH	435-215	20
2	WASHER, THRUST, .090 THK	032-205	21
1	BEARING, THRUST	032-190	22
1	TUBE, CARDBOARD	860-000	23
1	WASHER, THRUST .030 THK	032-170	24



SECTION A-A
SCALE: 1/1

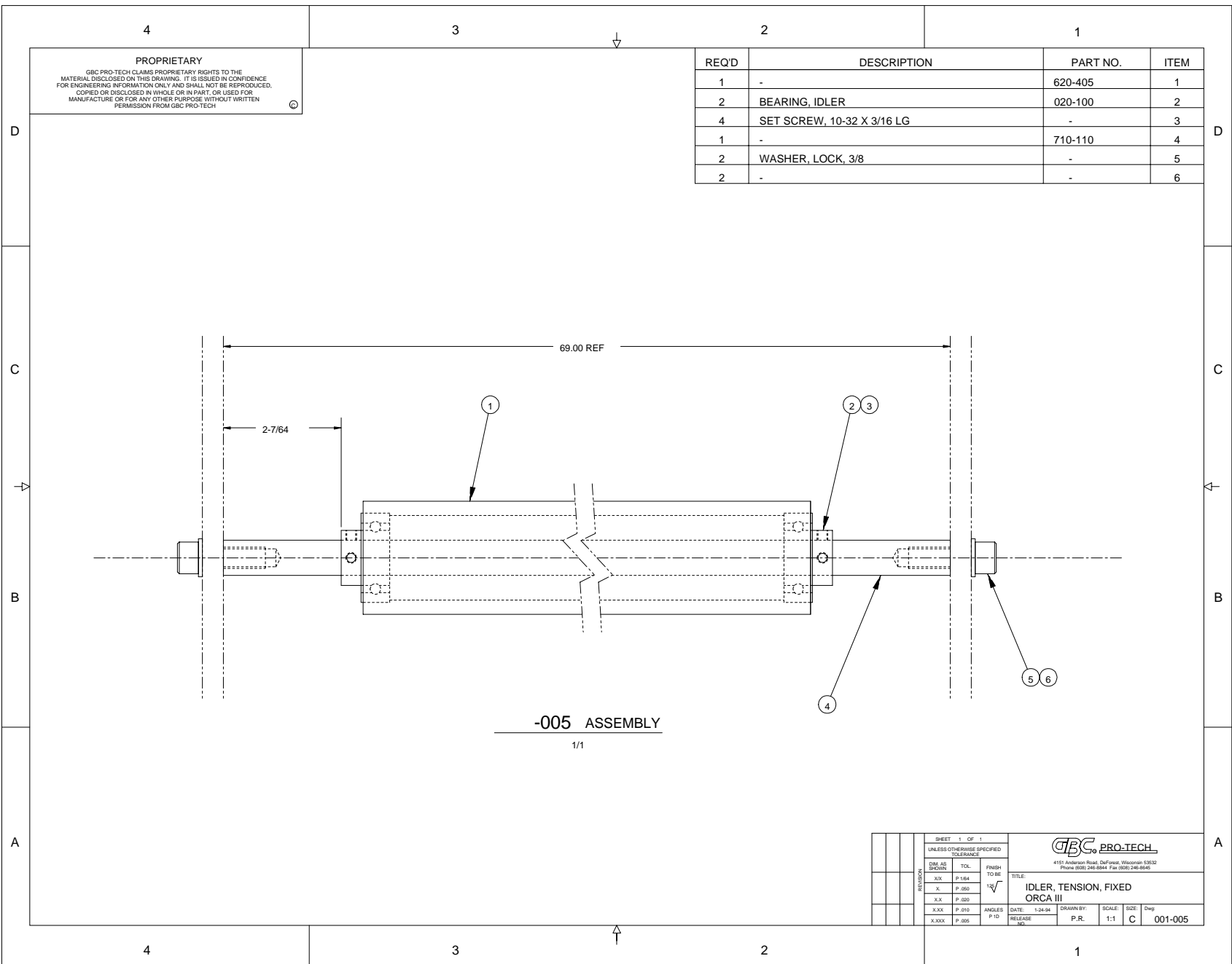


-002 ASSEMBL
SCALE: 1/2

UNLESS OTHERWISE SPECIFIED TOLERANCE				Pro-Tech Engineering 2117 N. Stryker Rd. Mehus, Wisconsin 53044 Phone (920) 346-0884 Fax (920) 346-0845			
DBL. AS DIMENSIONS	TOL.	FINISH TO BE	1/8"	TITLE: ASSY, REWIN ORCA II, III			
XXX	F 0.004			DATE: 4-7-93	DRAWN BY: RAS	ENG SCALE: C2	DRG NO: 001-002
X	F 0.002						
XXX	F 0.002						
XXX	F 0.010	ANGLES F 10					
XXX	F 0.005						

REQD	DESCRIPTION	PART NO.	ITEM
1	-	620-405	1
2	BEARING, IDLER	020-100	2
4	SET SCREW, 10-32 X 3/16 LG	-	3
1	-	710-110	4
2	WASHER, LOCK, 3/8	-	5
2	-	-	6

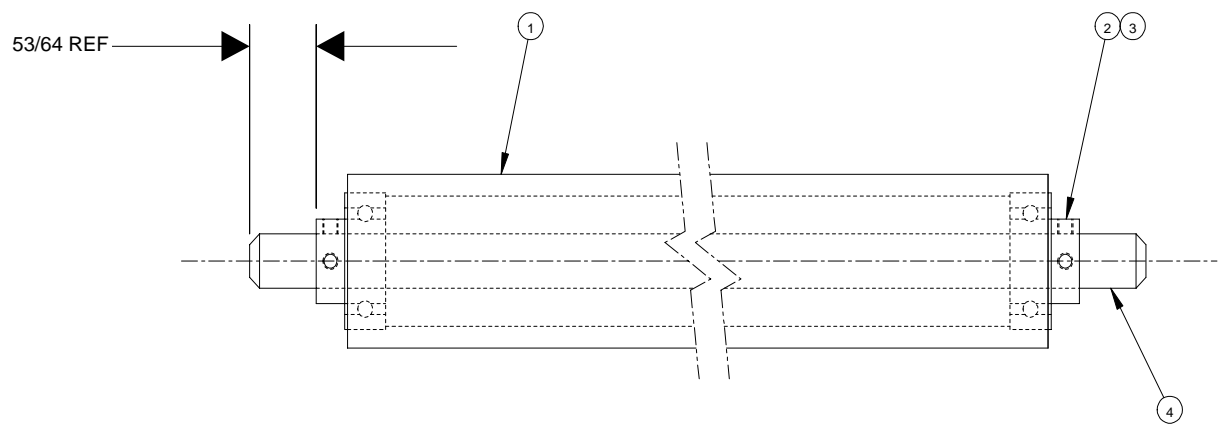
PROPRIETARY
 GBC PRO-TECH CLAIMS PROPRIETARY RIGHTS TO THE MATERIAL DISCLOSED ON THIS DRAWING. IT IS ISSUED IN CONFIDENCE FOR ENGINEERING INFORMATION ONLY AND SHALL NOT BE REPRODUCED, COPIED OR DISCLOSED IN WHOLE OR IN PART, OR USED FOR MANUFACTURE OR FOR ANY OTHER PURPOSE WITHOUT WRITTEN PERMISSION FROM GBC PRO-TECH.



-005 ASSEMBLY
 1/1

SHEET 1 OF 1			UNLESS OTHERWISE SPECIFIED TOLERANCE			GBC PRO-TECH 4151 Anderson Road, DeForest, Wisconsin 53532 Phone (800) 246-8844 Fax (800) 246-8545		
FINISH TO BE	TOL.	DRW. AS SHOWN	DATE	SCALE	SIZE	TITLE		
1/4	P.184	X	1-24-94	P.R.	1:1	IDLER, TENSION, FIXED		
	P.050	X			C	ORCA III		
	P.020	X.X				DRAWN BY: P.R.		
	P.005	X.XXX				DATE: 1-24-94		
		X.XXX				RELEASE		
						Dwg. 001-005		

REQ'D	DESCRIPTION	PART NO.	ITEM
1	IDLER, 2 X 64", CHROME	620-405	1
2	BEARING, IDLER	020-100	2
4	SETSCREW, 10-32 X 3/16" LG	-	3
1	IDLER SHAFT	710-111	4



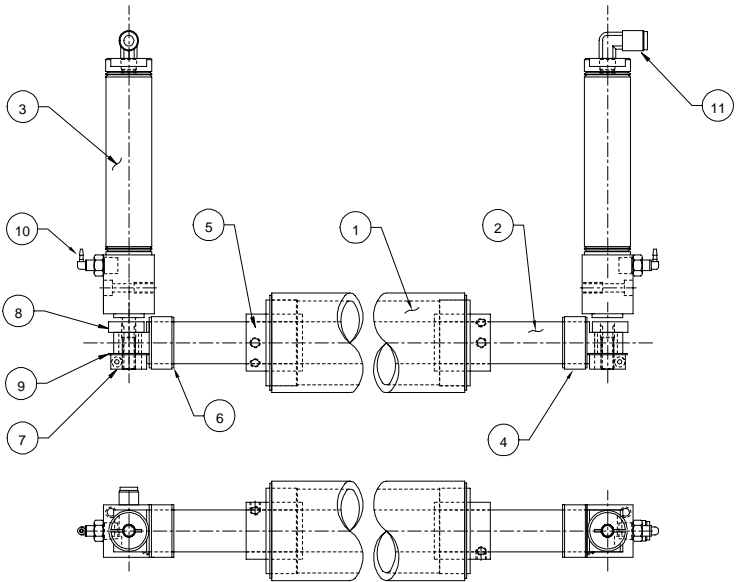
-006 ASSEMBLY
SCALE: 1/1

UNLESS OTHERWISE SPECIFIED TOLERANCE				Pro-Tech Engineering 2117 E. Shogren Rd. Madison, Wisconsin 53704 Phone (608) 245-8944 Fax (608) 245-4521			
DATE	TOL.	FINISH		TITLE: IDLER, PAPER INFEED ORCA III			
XXX	P .154			DATE	DRAWN BY:	DWG SCALE:	Dep
X	P .050			1-24-94	P.R.	C1	001-006
X.X	P .020			ANGLES			
XXX	P .010		P 10				
X.XXX	P .005						

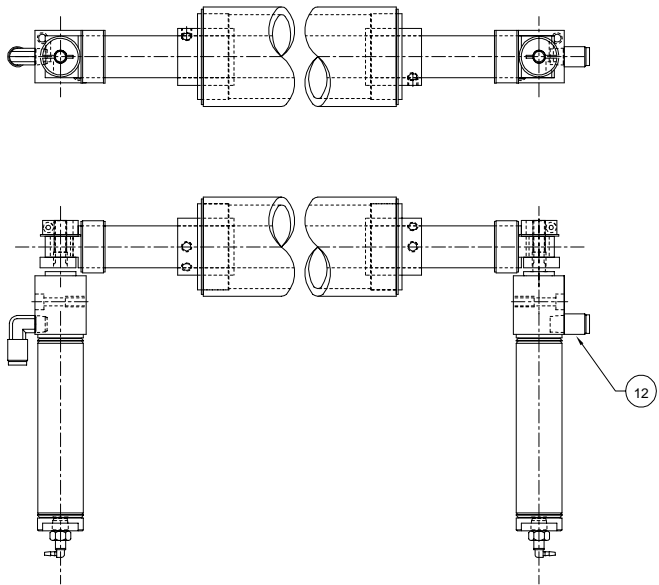
REQ'D	DESCRIPTION	PART NO.	ITEM
2	ROLLER, TENSION IDLER	620409	1
2	SHAFT, TENSION IDLER	X92-0173	2
4	CYLINDER, TENSION IDLER	320130	3
4	BEARING, CAM FOLLOWER	028130	4
4	BEARING, IDLER TENSION	020130	5
8	RETAINING RING	090200	6
4	LOCK COLLAR	290190	7
4	DROP WASHER	560050	8
4	FLAT WASHER, 1/4"	--	9
4	AIR FITTING, 1/16 SWIVEL ELBOW	330820	10
3	AIR FITTING, ELBOW 1/8 NPT	-	11
1	AIR FITTING, STRAIGHT 1/8 NPT	-	12

-007 ASSEMBLY

SCALE: 1/2



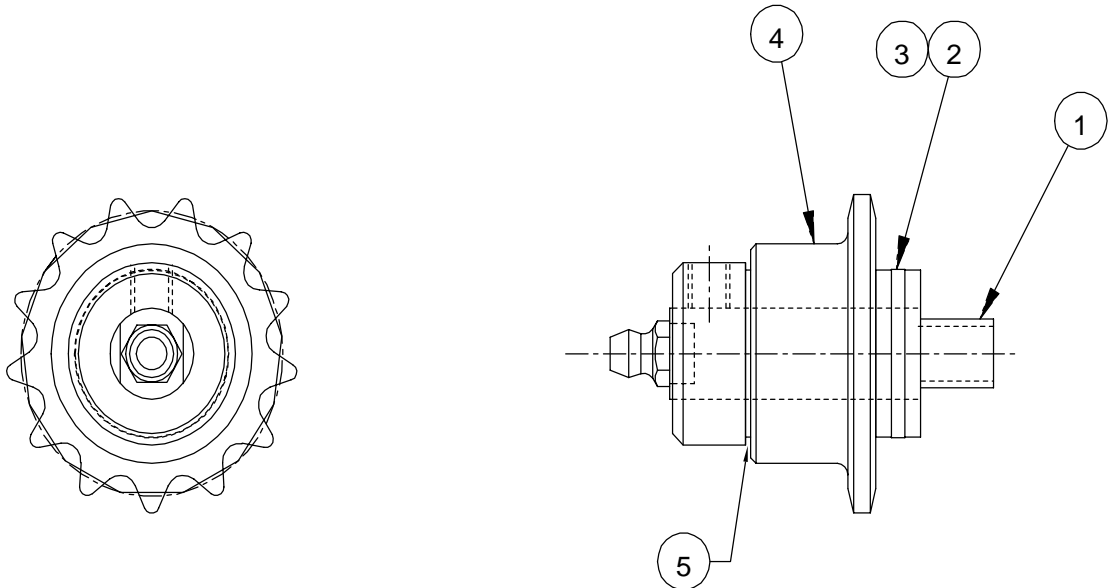
UUPPER



ULOWER

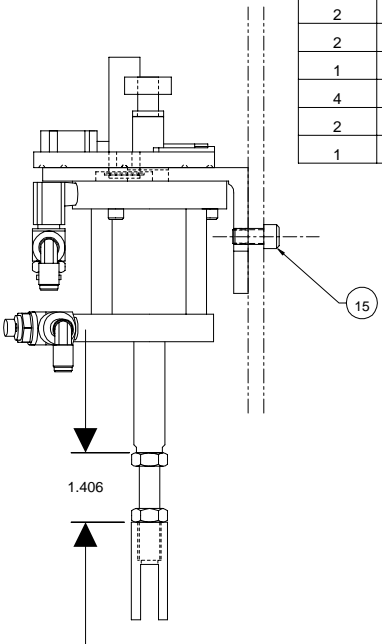
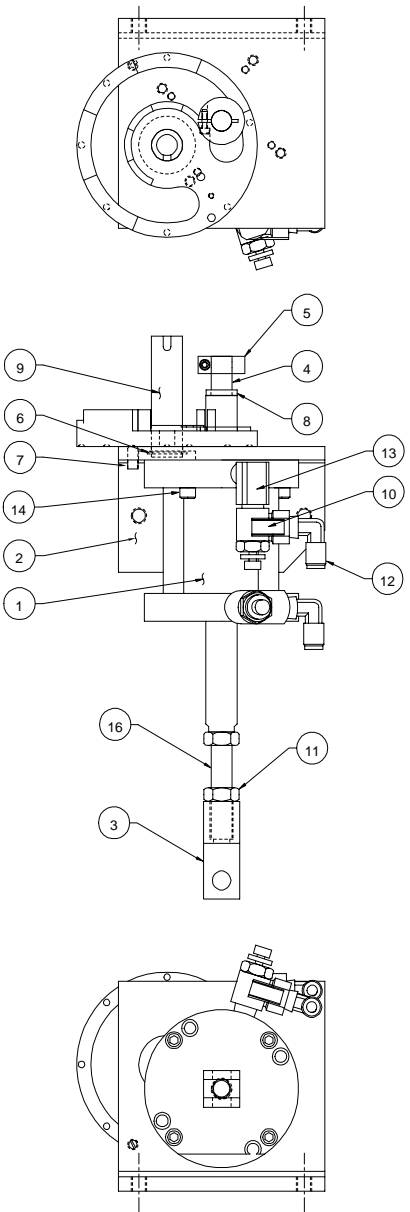
UNLESS OTHERWISE SPECIFIED TOLERANCE:		FRACTIONS		TITLES	
ØM AS SHOWN	TOL.	FRACTIONS	10-36	Pro-Tech Engineering	
Ø .XX	P. 164	✓		2117 N. Steingren Rd., Menasha, Wisconsin 53051	
Ø .X	P. 050			Phone (920) 246-6541 Fax (920) 246-4335	
Ø .XX	P. 020			TITLE	
Ø .XX	P. 010	ANGLES	P. 01	IDLER, TENSION, UPPER & LOWER	
Ø .XXX	P. 005			ORCA II	
		DATE:	DESIGNED BY:	DWG. SCALE:	Dep
		1-21-94	P.R.	C2	001-007

REQ'D	DESCRIPTION	PART NO.	ITEM
1	SHAFT, IDLER	440110	1
1	THRUST BEARING	032120	2
2	THRUST WASHER	032145	3
1	SPROCKET, 13T	440125	4
1	THRUST WASHER	032130	5



UNLESS OTHERWISE SPECIFIED TOLERANCE				This print is the property of PRO-TECH ENGR. The information thereon is remitted in confidence.			
DIM. AS SHOWN		TOL.	FINISH TO BE	Pro-Tech Engineering 2117 N. Rockwell St., Appleton, Wisconsin Phone (608) 246-8804 Fax (608) 246-4685			
X/	X	P 1/64	12/32				
X.	X.	P .050	\sqrt{R}	TITLE: SPROCKET, IDLER, ORCA 13T II			
X.	X.	P .020		ANGLES P 1D	DATE: 5-6-93	DRAWN BY: RAS	DWG SCALE: A1
X.X	X	P .010					
X.XX	X	P .005					

REQ'D	DESCRIPTION	PART NO.	ITEM
1	CYLINDER, MAIN ROLL, RT	320-290	1
1	BRACKET, MTG, CYL, RT	X92-0087	2
1	CLEVIS, MAIN ROLL	325-200	3
1	ADJUSTING ROD, 3/4-16, 1-3/8 LG	120-100	4
1	LOCK COLLAR	290-260	5
1	RETAINING RING	090-190	6
1	BALL PLUNGER	098-120	7
1	SHIM SPACER	068-100	8
1	SHIM DISK, MAIN CYL, RT	X92-0032	9
2	VALVE, SPEED REDUCER	330-130	10
2	NUT, JAM, 1/2-20	-	11
2	FITTING, AIR, 90%%D ELBOW, 1/4 NPT	330-730	12
1	FITTING, AIR, 90%%D STREET ELBOW, 1/4 NPT	330-760	13
4	CAP SCREW, SOCKET, 1/4 - 20 X 1" LG	-	14
2	CAP SCREW, SOCKET, 3/8-16 X 3/4 LG	-	15
1	ADJUSTING ROD, 3/4-16, 2-3/4 LG	120-100	16

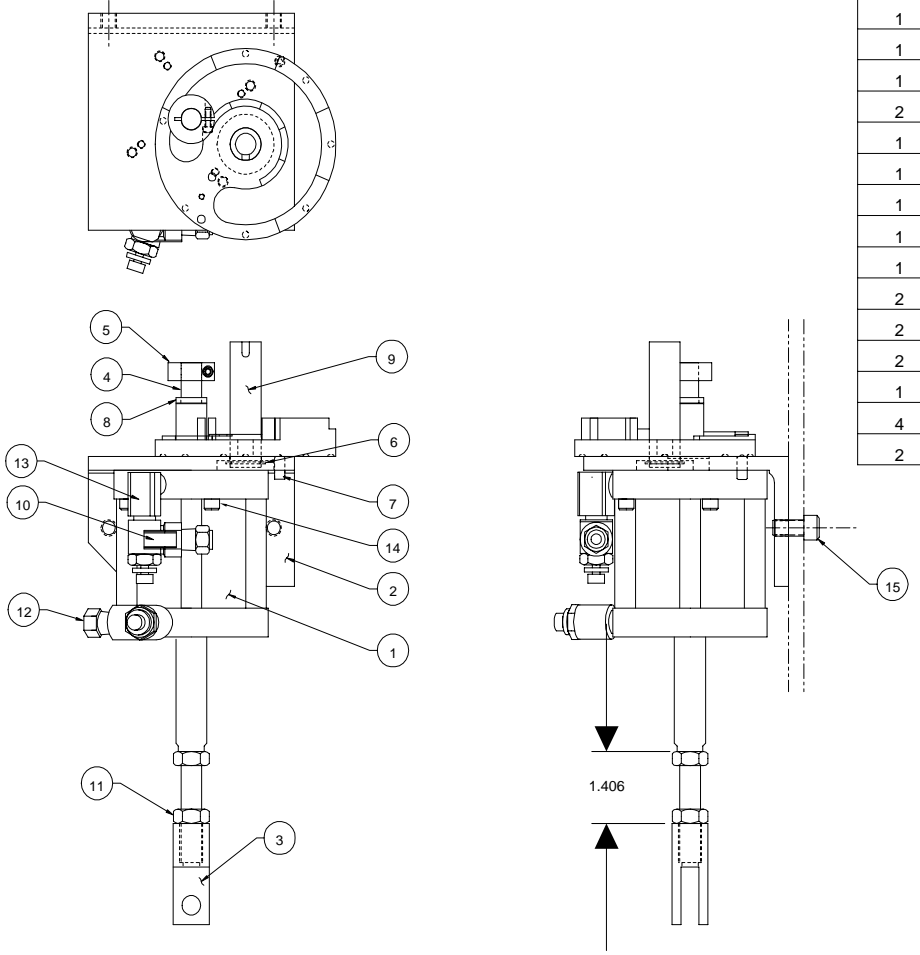


-047 ASSEMBLY

SCALE: 1/2

UNLESS OTHERWISE SPECIFIED TOLERANCE				Pro-Tech Engineering 2117 N. Saughron Rd. Madison, Wisconsin 53704 Phone: (608) 246-4544 Fax: (608) 246-4545			
FR	FRA	FMA	FMB	FINISH TO BE	TITLE: CYLINDER, MAIN ROLL, ORCA RT		
FR	FRA	FMA	FMB	√	DATE: 1-28-94	DRAWN BY: P.R.	DWG SCALE: C2
FR	FRA	FMA	FMB	ANGLES P 10	Dwg 001-047		

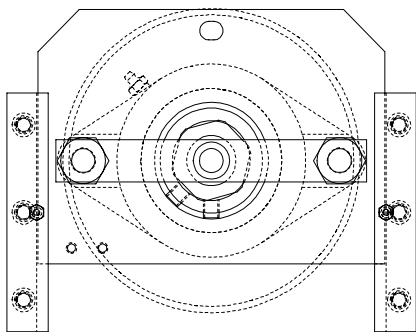
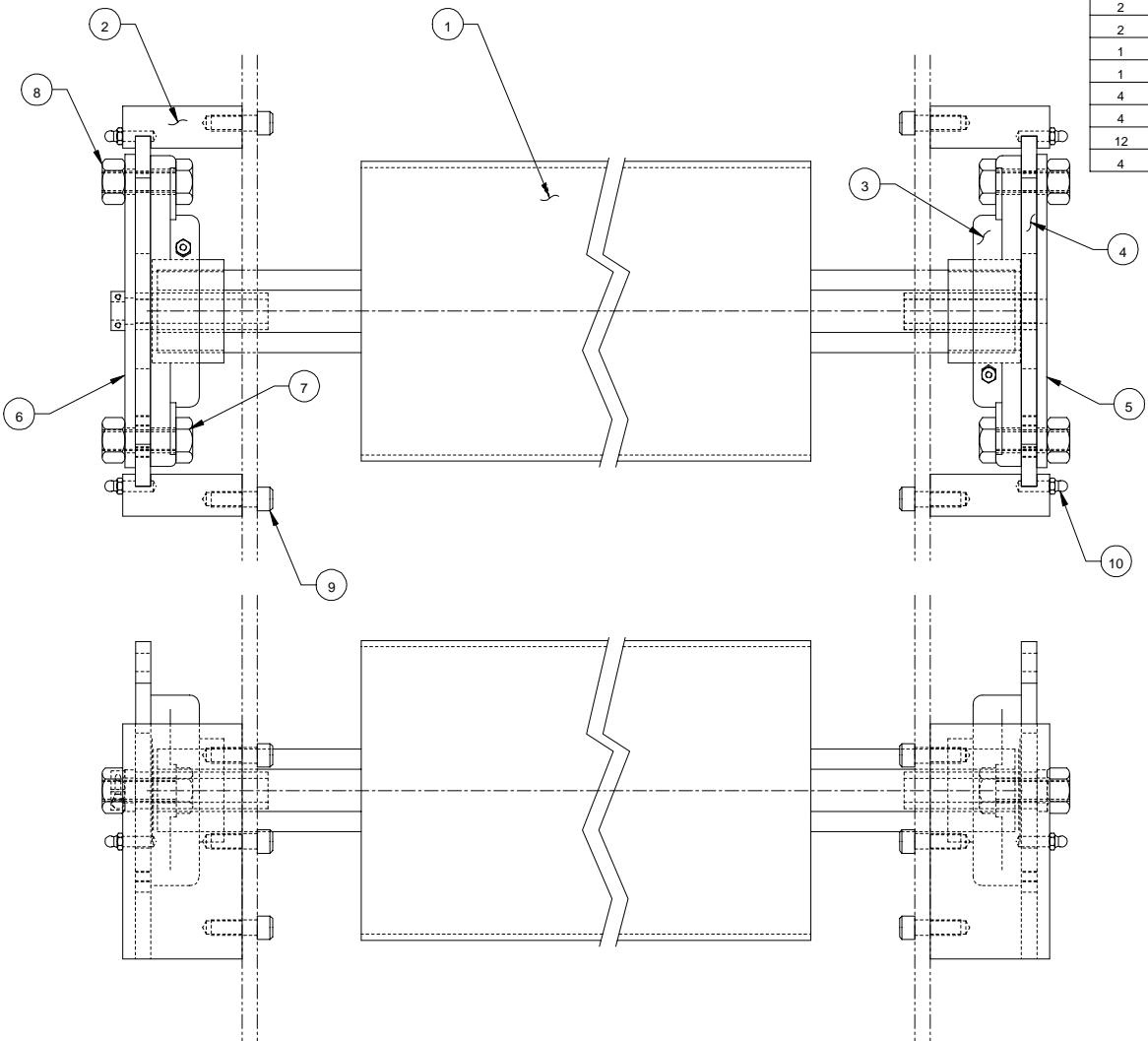
REQ'D	DESCRIPTION	PART NO.	ITEM
1	CYLINDER, MAIN ROLL, LF	320-290	1
1	BRACKET, MTG, CYL, LF	X92-0089	2
1	CLEVIS, MAIN ROLL	325-200	3
2	ADJUSTING ROD	120-100	4
1	LOCK COLLAR	290-260	5
1	RETAINING RING	090-190	6
1	BALL PLUNGER	098-120	7
1	SHIM SPACER	068-100	8
1	SHIM DISK, MAIN CYL, LF	X92-0090	9
2	VALVE, SPEED REDUCER	330-130	10
2	NUT, JAM, 1/2-20	-	11
2	FITTING, AIR, STRAIGHT, 1/4 NPT	330-600	12
1	FITTING, AIR, 90%D STREET ELBOW, 1/4 NPT	330-760	13
4	CAP SCREW, SOCKET, 1/4 - 20 X 1" LG	-	14
2	CAP SCREW, SOCKET, 3/8 - 16 X 3/4 " LG	-	15



-050 ASSEMBLY
SCALE: 1/2

UNLESS OTHERWISE SPECIFIED		TOLERANCE		FINISH TO BE		Pro-Tech Engineering 2117 W. Slaughter Rd. Madison, Wisconsin 53704 Phone: (608) 246-8844 Fax: (608) 246-8822	
Ø	F 1/100					TITLE: CYLINDER, MAIN ROLL, LF	
X	F 1/200					ORCA II	
X	F 1/200					DATE: 1-28-94	DRAWN BY: P.R.
X	F 1/200					ANGLES: P 10	DWG SCALE: C2
X	F 1/200						Dep: 001-050

REQD	DESCRIPTION	PART NO.	ITEM
1	ROLL, MAIN, TOP	X93-0114	1
4	BRACKET, ROLL SLIDE TRACK	X92-0027	2
2	BEARING, JOURNAL, MAIN ROLL	026110	3
2	BRACKET, BRG SLIDE PLATE	X92-0028	4
1	BRACKET, HEATER, DRIVE SIDE, TOP	X92-0167	5
1	BRACKET, HEATER, CONTROL SIDE	X93-0051	6
4	BOLT, HEX, 9/16-12 X 1-1/2 LG	-	7
4	NUT, JAM, 9/16-12	-	8
12	CAP SCREW, SOCKET, 3/8-16 X 1	-	9
4	FITTING, GREASE	-	10

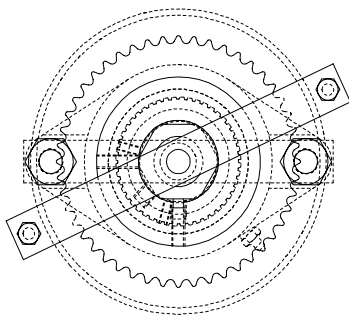
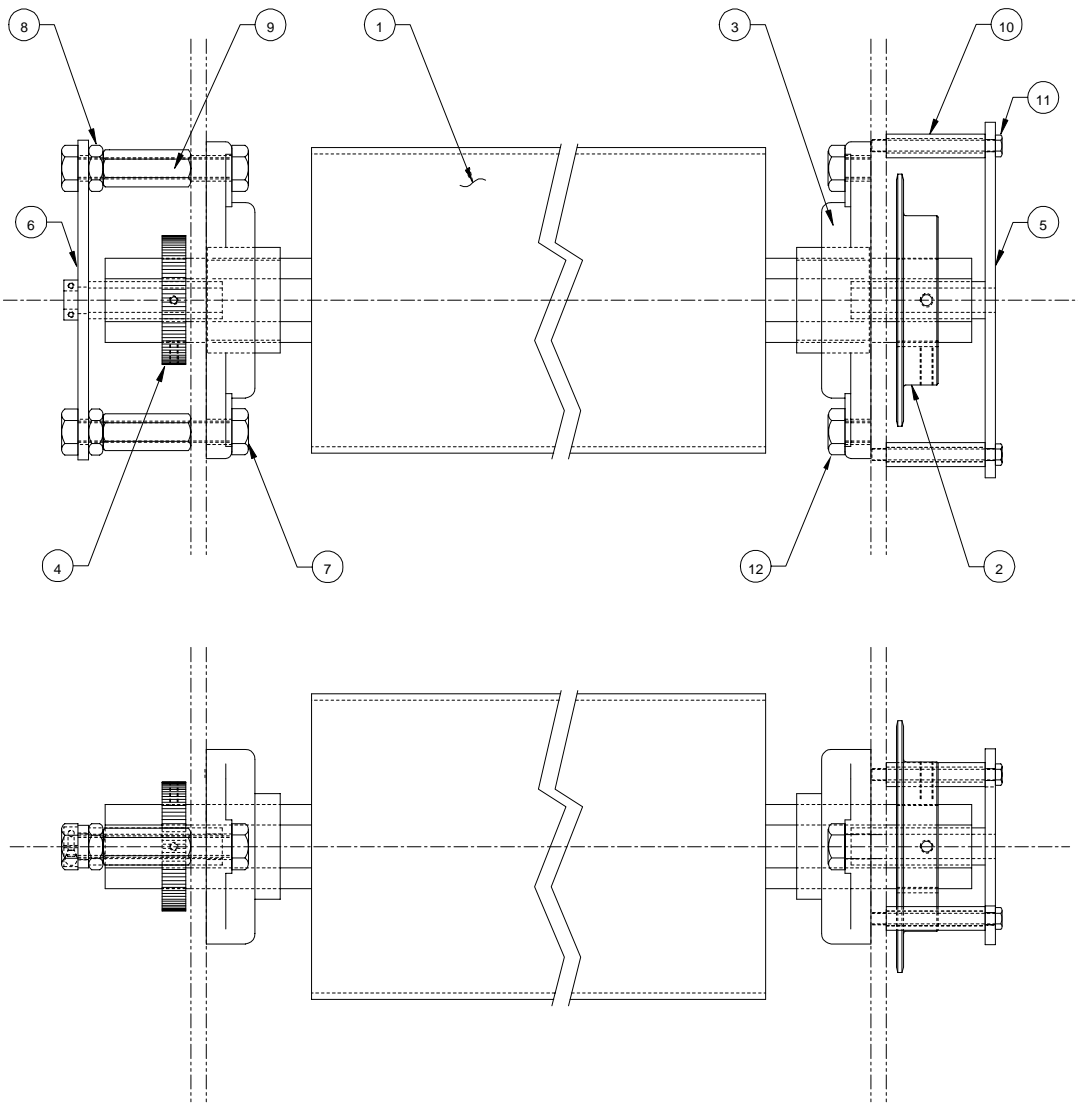


-051 ASSEMBLY

SCALE: 1/2

UNLESS OTHERWISE SPECIFIED TOLERANCE			Pro-Tech Engineering 2117 N. Stoutgron Rd., Madison, Wisconsin 53704 Phone (608) 246-6664 Fax (608) 246-6620	
DRG. AC.	TOL.	FINISH	TITLE:	
ASSEMBLY	±.001	TO BE	MAIN ROLL, TOP	
.X	F .004	√	ORCA II	
.X.X	F .002		DATE:	2-2-94
.X.XX	F .010	ANGLES	DRAWN BY:	P.R.
.X.XXX	F .005	P 10	DWG SCALE:	C2
			DATE:	001-051

REQD	DESCRIPTION	PART NO.	ITEM
1	ROLL, MAIN, bottom	X93-0114	1
1	SPROCKET, 48T 1-15/16 BORE	435225	2
2	BEARING, JOURNAL, MAIN ROLL	026110	3
1	PULLEY, BELT DRIVE, SPD CTRL	680055	4
1	BRACKET, HEATER, DRIVE SIDE, BOTTOM	X92-0166	5
1	BRACKET, HEATER, CONTROL SIDE	X93-0051	6
4	BOLT, HEX, 9/16-12 X 1-1/2 LG	-	7
2	NUT, JAM, 9/16-12	-	8
2	COUPLER, THREADED, 9/16-12 X 2-1/8 LG	X92-0025	9
2	STANDOFF	755001	10
2	BOLT, HEX, 1/4 - 20 X 3" LG	-	11
2	BOLT, HEX, 9/16 - 12 X 1" LG	-	12



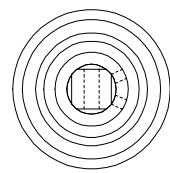
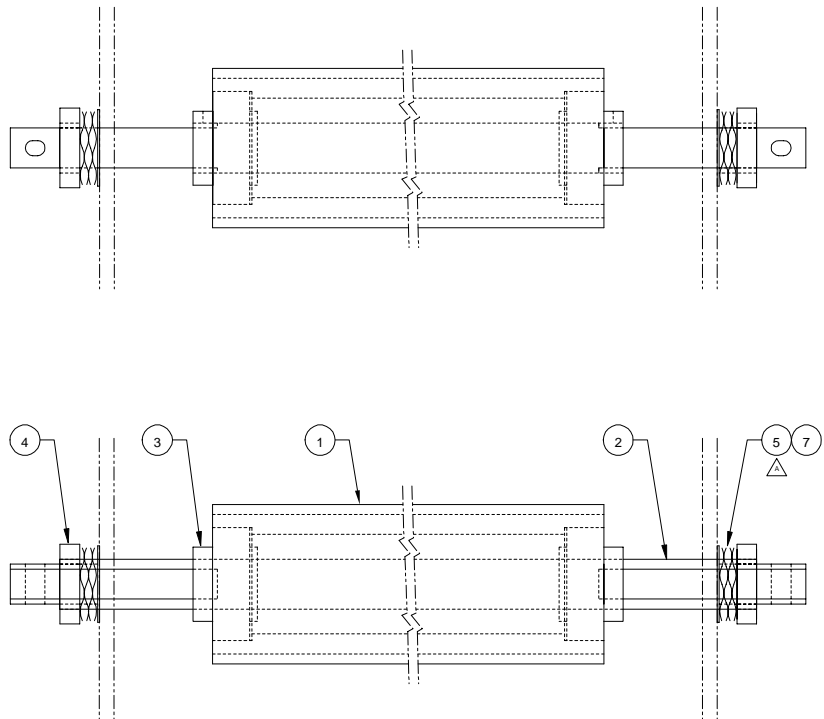
-053 ASSEMBL
SCALE: 1/2

UNLESS OTHERWISE SPECIFIED				TOLERANCE			
FR	AS	TOL.	FINISH	Pro-Tech Engineering			
XXX	XXX	±.004	TO BE	21178 Slaughter Rd. Madison, Wisconsin 53704			
XXX	XXX	±.001	√	Phone (608) 248-8044 Fax (608) 248-4555			
XXX	XXX	±.001		TITLE: MAIN ROLL, BOTTOM			
XXX	XXX	±.010	ANGLES	DATE: 2-2-94			
XXX	XXX	±.005	P 10	DRAWN BY: P.R.		DWG SCALE: C2	
				001-053			

REQ'D	DESCRIPTION	PART NO.	ITEM
1	PULL ROLL, TOP	X92-0075	1
1	SHAFT, PULL ROLL	X92-0103	2
2	BEARING, PULL ROLL, 1-1/4 ID	020-150	3
2	LOCK COLLAR, SPLIT, 1-1/4 ID	290-560	4
2	SPRING, WAVE,	089-015	5
2	WASHER, THRUST, 1-1/4 ID	032-410	7

PROPRIETARY
 GBC PRO-TECH CLAIMS PROPRIETARY RIGHTS TO THE MATERIAL DISCLOSED ON THIS DRAWING. IT IS ISSUED IN CONFIDENCE FOR ENGINEERING INFORMATION ONLY AND SHALL NOT BE REPRODUCED, COPIED OR DISCLOSED IN WHOLE OR IN PART, OR USED FOR MANUFACTURE OR FOR ANY OTHER PURPOSE WITHOUT WRITTEN PERMISSION FROM GBC PRO-TECH

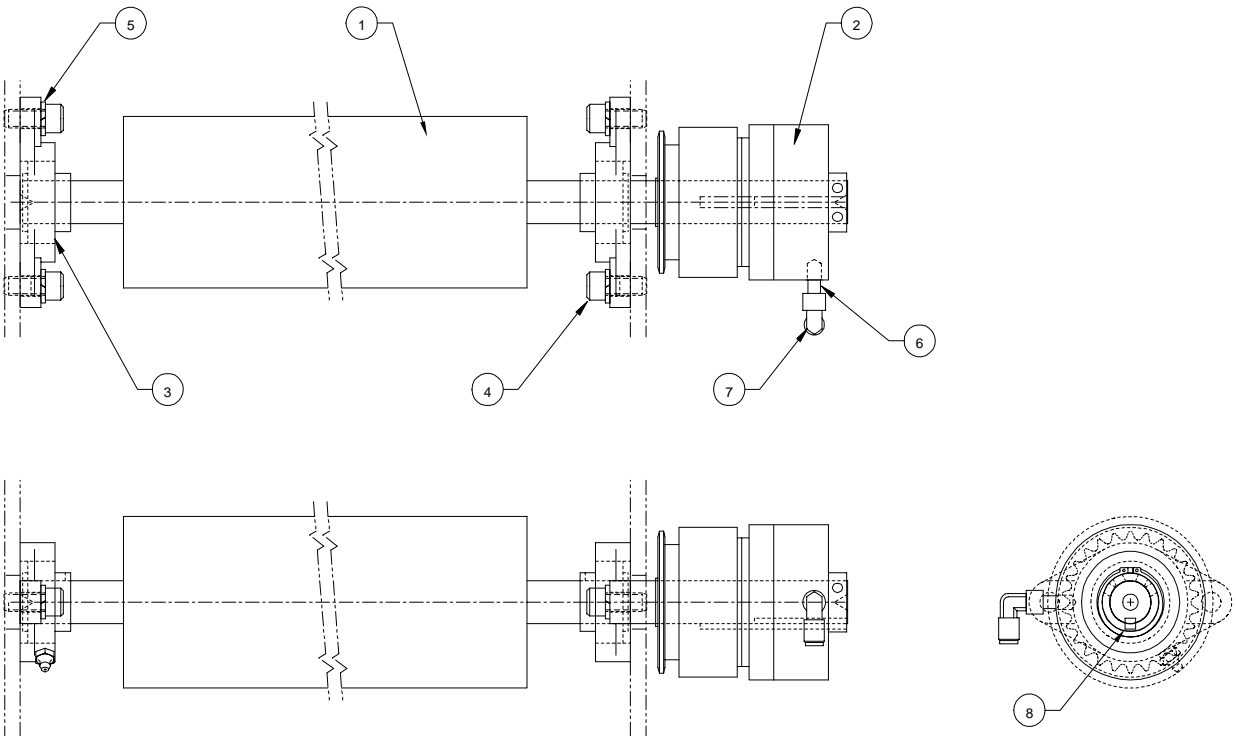
UNOTESU
 1. INTERPRET DRAWING PER ASME Y14.5-1994



-055 ASSEMBL
 SCALE: 1/2

SHEET 1 OF #REF!		GBC PRO-TECH	
UNLESS OTHERWISE SPECIFIED TOLERANCE		4151 Anderson Road, Delforest, Wisconsin 53532 Phone (855) 246-8544 Fax (855) 246-8545	
DIM AS SHOWN	TOL.	FINISH TO BE	TITLE: #REF!
.XX	F .354	1.5√	#REF!
.X	F .050		
.XX	F .020		
.XXX	F .010	ANGLES P 10	DATE: #REF! DRAWN BY: #REF! SCALE: #REF! SIZE: Dwg
.XXX	F .005	RELEASE NO.	#REF! #REF! #REF! #REF!

REQ'D	DESCRIPTION	PART NO.	ITEM
1	PULL ROLL, BOTTOM	X92-0078	1
1	CLUTCH, PNEUMATIC, 26T	375170	2
2	BEARING, PILLOW BLK, FLANGED	026100	3
4	CAP SCREW, SOCKET, 7/16 - 14 X 1" LG	-	4
4	WASHER, LOCK, 7/16	-	5
1	NIPPLE, CLOSE, 1/8 NPT	330220	6
1	FITTING, AIR, FEM ELBOW, 1/8 NPT	330510	7
1	KEY, 1/4 X 1/4 STOCK	-	8

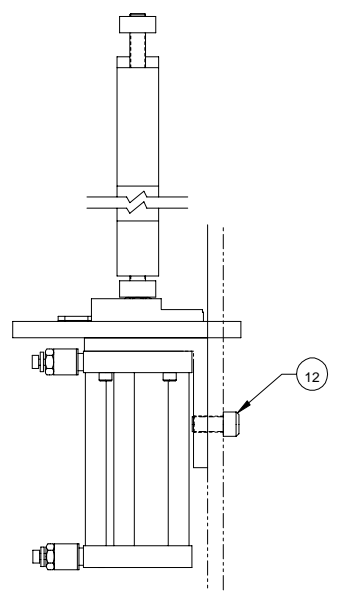
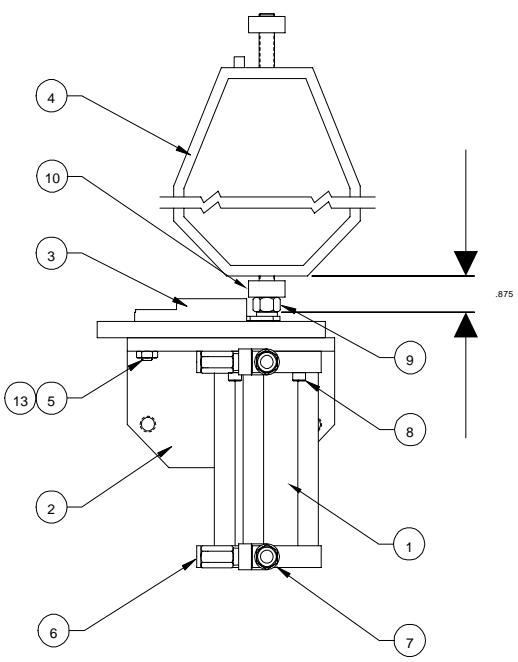
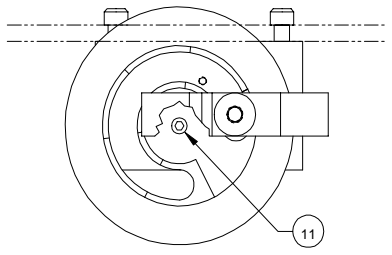


-056 ASSEMBLY

SCALE: 1/2

UNLESS OTHERWISE SPECIFIED TOLERANCE:			Pro-Tech Engineering 2117 N. Saugan Rd. Madison, Wisconsin 53704 Phone (608) 248-8844 Fax (608) 248-6288																	
<table border="1"> <tr> <th>DIM AS SHOWN</th> <th>TOL.</th> <th>FINISH TO BE</th> </tr> <tr> <td>XXX</td> <td>F .004</td> <td></td> </tr> <tr> <td>X</td> <td>F .005</td> <td></td> </tr> <tr> <td>XX</td> <td>F .010</td> <td></td> </tr> <tr> <td>XXX</td> <td>F .015</td> <td></td> </tr> </table>	DIM AS SHOWN	TOL.	FINISH TO BE	XXX	F .004		X	F .005		XX	F .010		XXX	F .015		TITLE: PULL ROLL, BOTTOM ORCA II	DATE: 2-4-94	DRAWN BY: P.R.	DWG SCALE: C2	Dwg No: 001-056
DIM AS SHOWN	TOL.	FINISH TO BE																		
XXX	F .004																			
X	F .005																			
XX	F .010																			
XXX	F .015																			
<table border="1"> <tr> <th>REVISION</th> <th>DATE</th> <th>BY</th> <th>DESCRIPTION</th> </tr> <tr> <td> </td> <td> </td> <td> </td> <td> </td> </tr> </table>	REVISION	DATE	BY	DESCRIPTION					ANGLES: P 10	DATE: 2-4-94	DRAWN BY: P.R.	DWG SCALE: C2	Dwg No: 001-056							
REVISION	DATE	BY	DESCRIPTION																	

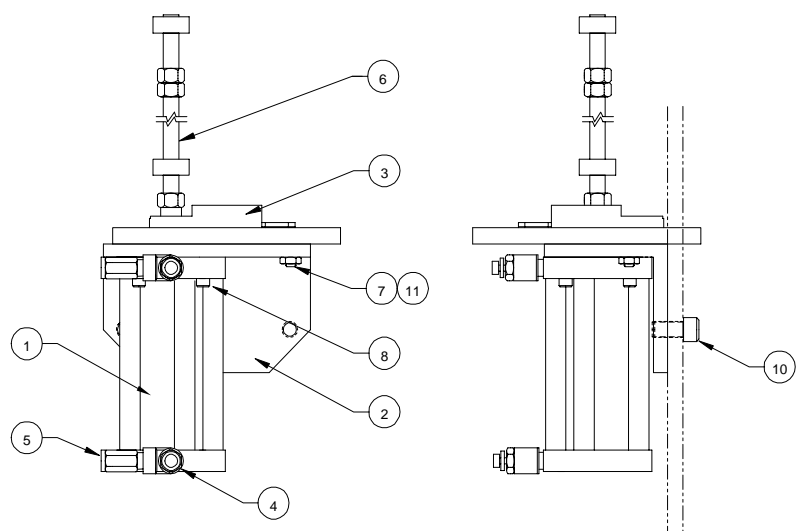
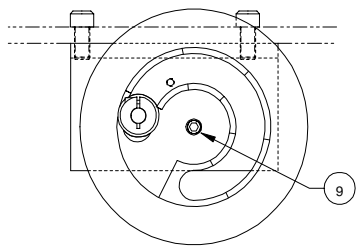
REQ'D	DESCRIPTION	PART NO.	ITEM
1	CYL, PULL ROLL (BIMBA FO-174)	320-300	1
1	BRACKET, CYL MNT, RT	510-082	2
1	SHIM DISK, PULL ROLL, RT	X92-0091	3
1	BRACKET, LIFT, PULL ROLL	X92-0138	4
1	PLUNGER, BALL	098-120	5
2	FITTING, AIR, MALE 1/8 NPT	330-590	6
2	VALVE, AIR CONTROL, 1/8 NPT	330-120	7
4	CAP SCREW, SOCKET, 10-32 X 3/4	-	8
1	NUT, JAM, 3/8-24	-	9
2	LOCK COLLAR, 3/8-24	290-190	10
1	BOLT, SHOULDER, 1/4 X 3/8	-	11
2	CAP SCREW, SOCKET, 3/8-16 X 3/4	-	12
1	JAM NUT, 1/4-20	-	13



-058 ASSEMBLY
SCALE: 1/2

UNLESS OTHERWISE SPECIFIED TOLERANCE		FINISH TO BE		DATE		DRAWN BY		DWG SCALE		Dwg	
ØM AS	TOL	Ø	√	2-8-94	P.R.	C2					001-058
ØM AS	F 1/64	X	√								
X	F .002	X	√								
X	F .010	X	√								
X	F .005	X	√								

REQ'D	DESCRIPTION	PART NO.	ITEM
1	CYL, PULL ROLL, (BIMBA FO-174)	320-300	1
1	BRACKET, CYL MNT, LF	510-079	2
1	SHIM DISK, PULL ROLL, LF	X92-0092	3
2	VALVE, AIR CONTROL, 1/8 NPT	330-120	4
2	FITTING, AIR, MALE 1/8 NPT	330-590	5
1	ASSEMBLY, SHAFT, CYLINDER, PULL ROLL	001-304	6
1	PLUNGER, BALL	098-120	7
8	CAP SCREW, SOCKET, 10-32 X 3/4	-	8
1	BOLT, SHOULDER, 1/4 X 3/8	-	9
2	CAP SCREW, SOCKET, 3/8-16 X 3/4	-	10
1	JAM NUT, 1/4-20	-	11



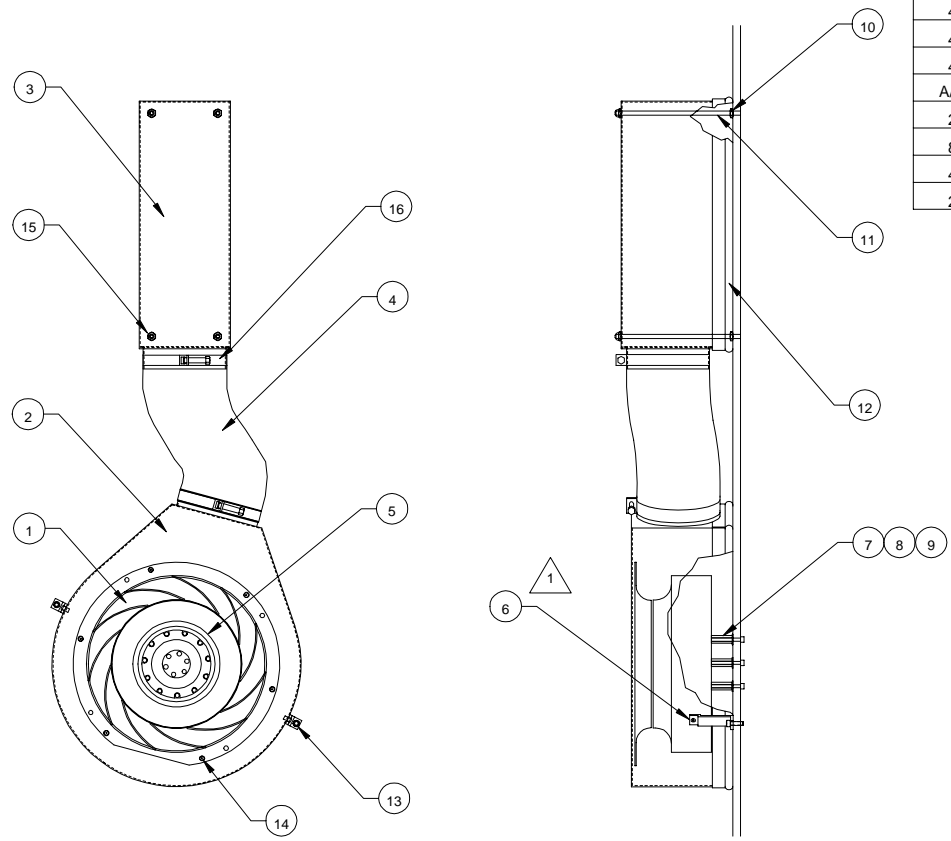
-O59 ASSEMBLY
SCALE-1/2

UNLESS OTHERWISE SPECIFIED TOLERANCE				Pro-Tech Engineering 2117 N. Stoughton Rd., Madison, Wisconsin 53704 Phone (608) 246-6844 Fax (608) 246-4855			
DES. AS. DIMENSIONS	TOL.	FRESH TO BE	1/√	TITLE: CYLINDER, PULL ROLL, LF ORCA II			
XXX	F.004			DATE: 2-9-94	DESIGNED BY: P.R.	DWG SCALE: C2	APP: 001-059
X	F.003						
XXX	F.010						
XXX	F.005						

REQD	DESCRIPTION	PART NO.	ITEM
1	INLET RING	182300	1
1	SHROUD, AIR	X93-0023	2
1	BOX, AIR	X93-0024	3
1	HOSE, FLEX AIR, 4"	180500	4
1	FAN, REVERSE IMPELLER	182200	5
2	BRACKET, AIR SHROUD	X93-0045	6
4	SPACER, FAN	120510	7
4	WASHER, FLAT, 1/4	-	8
4	CAP SCREW, SOCKET, M4 X 40	050400	9
4	NUT, JAM, 10-32	-	10
4	STUD, 10 - 32 X 6" LG	-	11
A/R	GASKET, TRIM LOCK	484200	12
2	CAP SCREW, SOCKET, 10-32 X 3/4 LG	-	13
8	RIVET, POP, 1/4	-	14
4	NUT, LOCK, 10-32	-	15
2	CLAMP, HOSE, 4 - 1/2" LG	100130	16

NOTES

1 TWO HOLES ARE PROVIDED FOR MOUNTING BRACKET (X93-0045) TO FAN SHROUD (X93-0023). USE LOWER HOLE LOCATION FOR ASSEMBLY -061 ONLY.



-061 ASSEMBLY

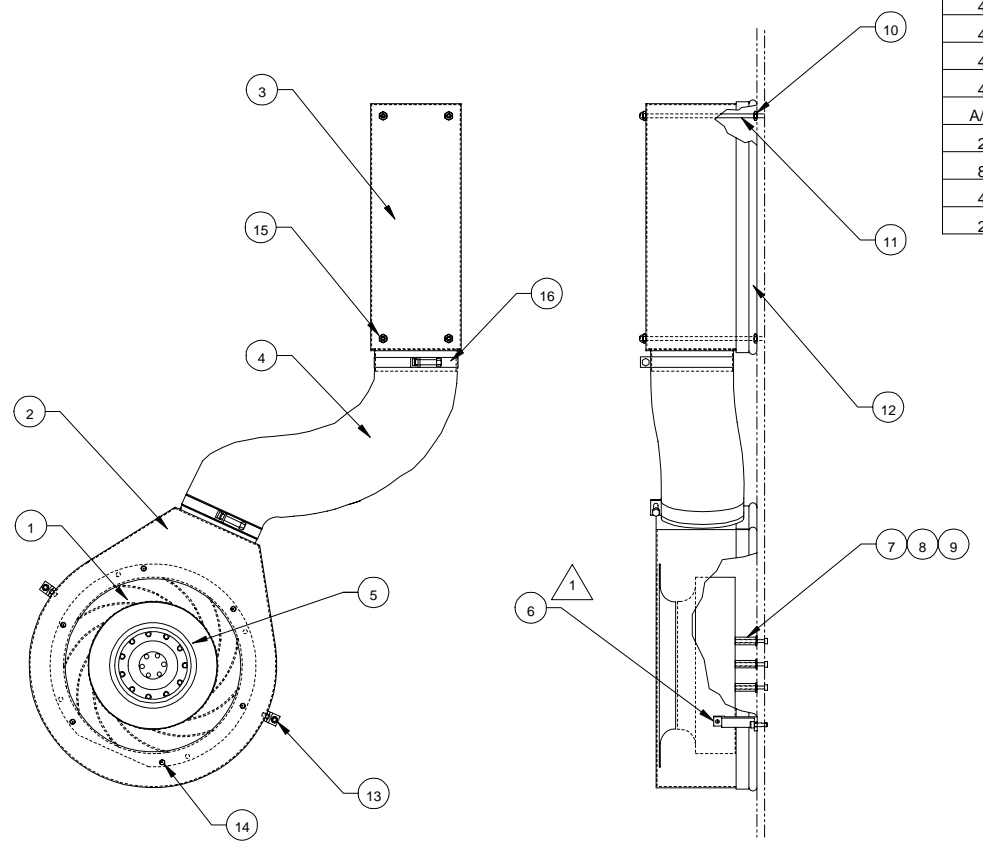
SCALE: 1/4

UNLESS OTHERWISE SPECIFIED TOLERANCE:		Pro-Tech Engineering 2117 N. Douglas Rd. Madison, Wisconsin 53704 Phone (608) 245-8844 Fax (608) 245-6855	
FRONT	±.015	DATE	2-10-84
BACK	±.015	DRW'N	P.R.
SIDE	±.015	DATE	2-10-84
TOP	±.015	DRW'N	P.R.
BOTTOM	±.015	DATE	2-10-84
ANGLE	±.015	DRW'N	P.R.
SCALE	1:1	DATE	2-10-84
1:1	1:1	DRW'N	P.R.
2:1	2:1	DATE	2-10-84
3:1	3:1	DRW'N	P.R.
4:1	4:1	DATE	2-10-84
5:1	5:1	DRW'N	P.R.
6:1	6:1	DATE	2-10-84
7:1	7:1	DRW'N	P.R.
8:1	8:1	DATE	2-10-84
9:1	9:1	DRW'N	P.R.
10:1	10:1	DATE	2-10-84
11:1	11:1	DRW'N	P.R.
12:1	12:1	DATE	2-10-84
13:1	13:1	DRW'N	P.R.
14:1	14:1	DATE	2-10-84
15:1	15:1	DRW'N	P.R.
16:1	16:1	DATE	2-10-84
17:1	17:1	DRW'N	P.R.
18:1	18:1	DATE	2-10-84
19:1	19:1	DRW'N	P.R.
20:1	20:1	DATE	2-10-84
21:1	21:1	DRW'N	P.R.
22:1	22:1	DATE	2-10-84
23:1	23:1	DRW'N	P.R.
24:1	24:1	DATE	2-10-84
25:1	25:1	DRW'N	P.R.
26:1	26:1	DATE	2-10-84
27:1	27:1	DRW'N	P.R.
28:1	28:1	DATE	2-10-84
29:1	29:1	DRW'N	P.R.
30:1	30:1	DATE	2-10-84
31:1	31:1	DRW'N	P.R.
32:1	32:1	DATE	2-10-84
33:1	33:1	DRW'N	P.R.
34:1	34:1	DATE	2-10-84
35:1	35:1	DRW'N	P.R.
36:1	36:1	DATE	2-10-84
37:1	37:1	DRW'N	P.R.
38:1	38:1	DATE	2-10-84
39:1	39:1	DRW'N	P.R.
40:1	40:1	DATE	2-10-84
41:1	41:1	DRW'N	P.R.
42:1	42:1	DATE	2-10-84
43:1	43:1	DRW'N	P.R.
44:1	44:1	DATE	2-10-84
45:1	45:1	DRW'N	P.R.
46:1	46:1	DATE	2-10-84
47:1	47:1	DRW'N	P.R.
48:1	48:1	DATE	2-10-84
49:1	49:1	DRW'N	P.R.
50:1	50:1	DATE	2-10-84
51:1	51:1	DRW'N	P.R.
52:1	52:1	DATE	2-10-84
53:1	53:1	DRW'N	P.R.
54:1	54:1	DATE	2-10-84
55:1	55:1	DRW'N	P.R.
56:1	56:1	DATE	2-10-84
57:1	57:1	DRW'N	P.R.
58:1	58:1	DATE	2-10-84
59:1	59:1	DRW'N	P.R.
60:1	60:1	DATE	2-10-84
61:1	61:1	DRW'N	P.R.
62:1	62:1	DATE	2-10-84
63:1	63:1	DRW'N	P.R.
64:1	64:1	DATE	2-10-84
65:1	65:1	DRW'N	P.R.
66:1	66:1	DATE	2-10-84
67:1	67:1	DRW'N	P.R.
68:1	68:1	DATE	2-10-84
69:1	69:1	DRW'N	P.R.
70:1	70:1	DATE	2-10-84
71:1	71:1	DRW'N	P.R.
72:1	72:1	DATE	2-10-84
73:1	73:1	DRW'N	P.R.
74:1	74:1	DATE	2-10-84
75:1	75:1	DRW'N	P.R.
76:1	76:1	DATE	2-10-84
77:1	77:1	DRW'N	P.R.
78:1	78:1	DATE	2-10-84
79:1	79:1	DRW'N	P.R.
80:1	80:1	DATE	2-10-84
81:1	81:1	DRW'N	P.R.
82:1	82:1	DATE	2-10-84
83:1	83:1	DRW'N	P.R.
84:1	84:1	DATE	2-10-84
85:1	85:1	DRW'N	P.R.
86:1	86:1	DATE	2-10-84
87:1	87:1	DRW'N	P.R.
88:1	88:1	DATE	2-10-84
89:1	89:1	DRW'N	P.R.
90:1	90:1	DATE	2-10-84
91:1	91:1	DRW'N	P.R.
92:1	92:1	DATE	2-10-84
93:1	93:1	DRW'N	P.R.
94:1	94:1	DATE	2-10-84
95:1	95:1	DRW'N	P.R.
96:1	96:1	DATE	2-10-84
97:1	97:1	DRW'N	P.R.
98:1	98:1	DATE	2-10-84
99:1	99:1	DRW'N	P.R.
100:1	100:1	DATE	2-10-84

REQ'D	DESCRIPTION	PART NO.	ITEM
1	INLET RING	182300	1
1	SHROUD, AIR	X93-0023	2
1	BOX, AIR	X93-0024	3
1	HOSE, FLEX AIR, 4"	180500	4
1	FAN, REVERSE IMPELLER	182200	5
2	BRACKET, AIR SHROUD	X93-0045	6
4	SPACER, FAN	120510	7
4	WASHER, FLAT, 1/4	-	8
4	CAP SCREW, SOCKET, M4 X 40	050400	9
4	NUT, JAM, 10-32	-	10
4	STUD, 10 - 32 X 6"	-	11
A/R	GASKET, TRIM LOCK	484200	12
2	CAP SCREW, SOCKET, 10-32 X 3/4 LG	-	13
8	RIVET, POP, 1/4	-	14
4	NUT, LOCK, 10-32	-	15
2	CLAMP, HOSE, 4-1/2"	100130	16

NOTES:

1 TWO HOLES ARE PROVIDED FOR MOUNTING BRACKET (X93-0045) TO FAN SHROUD (X93-0023). USE UPPER HOLE LOCATION FOR ASSEMBLY -062 ONLY.

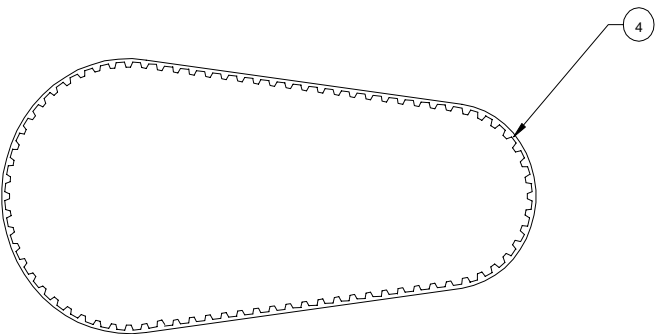
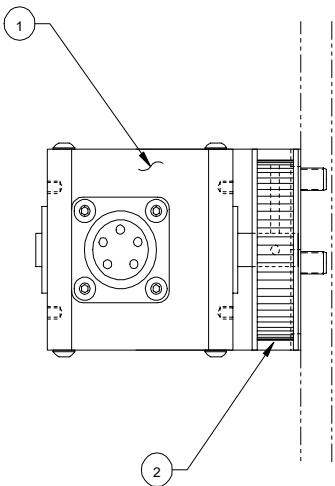
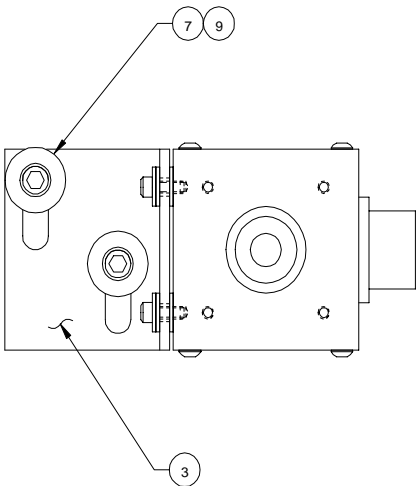
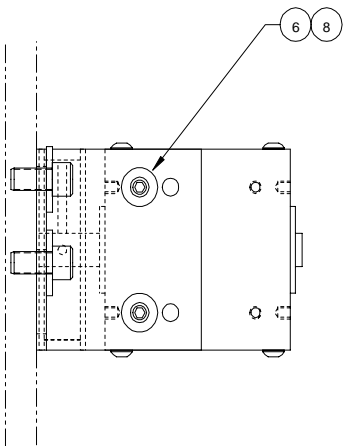
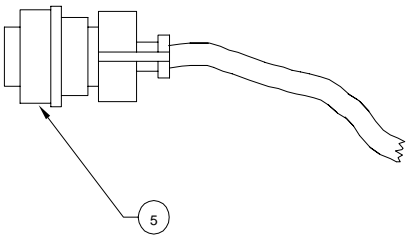


-062 ASSEMBLY

SCALE: 1/4

UNLESS OTHERWISE SPECIFIED TOLERANCES				Pro-Tech Engineering 2117 N. Stegman Rd. Madison, Wisconsin 53704 Phone (608) 246-0044 Fax (608) 246-4895			
FRONT	FINISH	TITLE: BLOWER, RT ORCA II		DATE: 2-10-94	DRAWN BY: P.R.	DWG SCALE: C4	APP: 001-062
DRW. AC. SECTION	TOL.	FINISH TO BE					
A/R	P. 104	✓					
X	P. 105						
X/A	P. 106						
B/S	P. 107						
X/OK	P. 108						

REQ'D	DESCRIPTION	PART NO.	ITEM
1	ROTO PULSER	219140	1
1	PULLEY, 32T	430100	2
1	BRACKET, ENCODER MTG	510015	3
1	BELT, TIMING	400105	4
1	CABLE, CONNECTING	219130	5
2	CAP SCREWS, SOCKET, 6-32 X 1/4 LG	-	6
2	CAP SCREWS, SOCKET, 14-20 X 1/2 LG	-	7
6	WASHER, FLAT, #6	-	8
2	WASHER, FLAT, 1/4	-	9

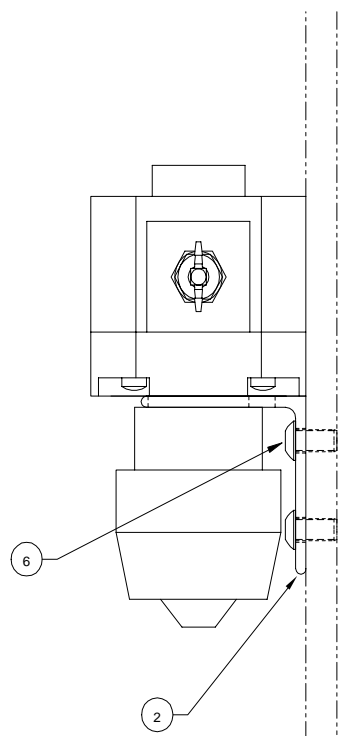
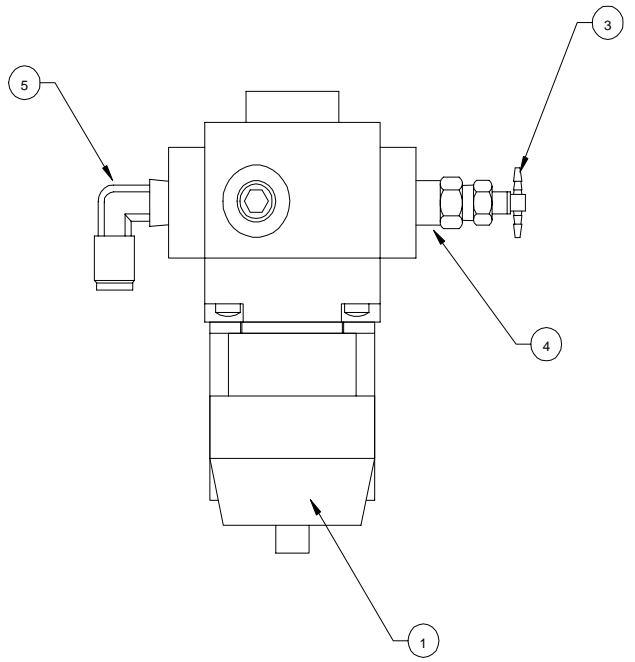
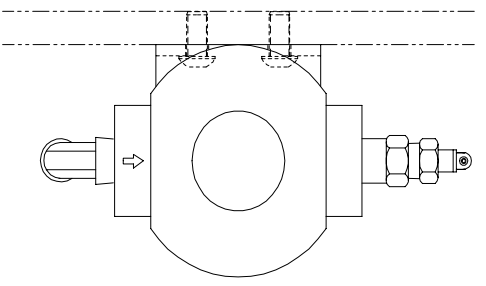


-063 ASSEMBLY

SCALE: 1/1

UNLESS OTHERWISE SPECIFIED:									
E									
DRW	TOL.	FINS	RE	Pro-Tech Engineering					
SMO		RE	BE	2117 N. Douglas St. Madison, Wisconsin					
X	F.154			Phone (608) 246-3889 Fax (608) 246-					
X	F.050			0022					
X	F.020			TITLE ENCODER, SPEED					
X	F.010	ANGLE	DATE	DRGWIN	DRW	DRG	001-		
X	F.008	ID	2-14-94	P.R.	SCALE	1	063		
X									

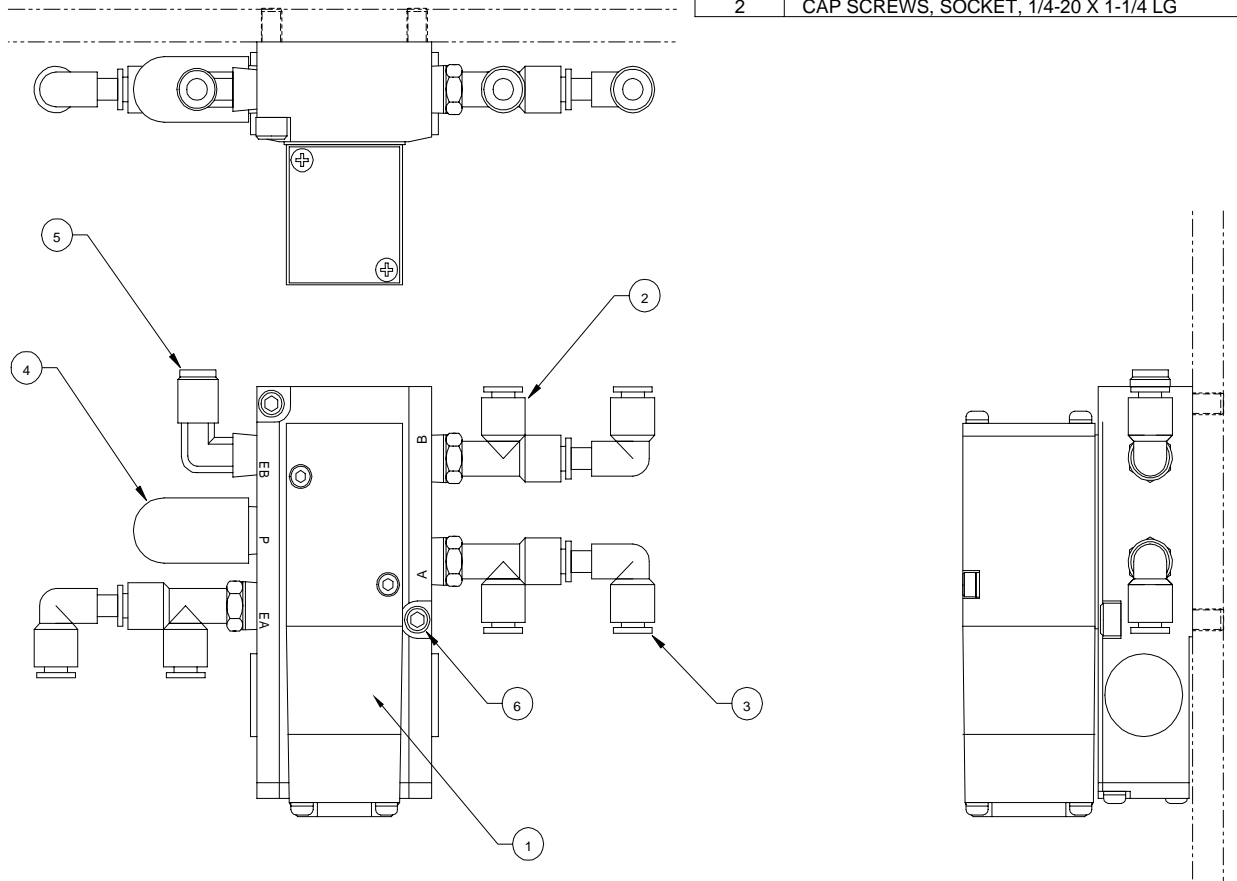
REQ'D	DESCRIPTION	PART NO.	ITEM
1	REGULATOR, AIR	340120	1
1	BRACKET, MTG, REGULATOR	510000	2
1	FITTING, AIR, 1/16 TEE	330830	3
1	FITTING, AIR, BUSHING, 1/4 X 1/8	330610	4
1	FITTING, AIR, ELBOW, MALE	330730	5
2	CAP SCREW, BUTTON, 1/4-20 X 1/2	-	6



-065 ASSEMBLY
SCALE: 1/1

This print is the property of PRO-TECH ENGINE. The information thereon is restricted.									
UNLESS OTHERWISE SPECIFIED:					Pro-Tech Engineering				
E					2117 N. Staughlin Rd. Madison, Wisconsin				
Phone (608) 242-2888 Fax (608) 245-0222					TITLE				
REGULATOR, AIR					REGULATOR, AIR				
ORCA II					ORCA II				
DATE		DRAWN		DWG		Dwg		001-065	
2-15-94		P.R.		C		1			
SCALE		P.R.		SCALE		SCALE			
1:1		P.R.		1		1			

REQ'D	DESCRIPTION	PART NO.	ITEM
1	VALVE, AIR, SOLENOID	350100	1
3	FITTING, AIR, RUN TEE, MALE	330290	2
3	FITTING, AIR, ELBOW, MALE (SMC)	330300	3
1	MUFFLER, AIR	330280	4
1	FITTING, AIR, ELBOW, MALE 1/4 NPT	330730	5
2	CAP SCREWS, SOCKET, 1/4-20 X 1-1/4 LG	-	6

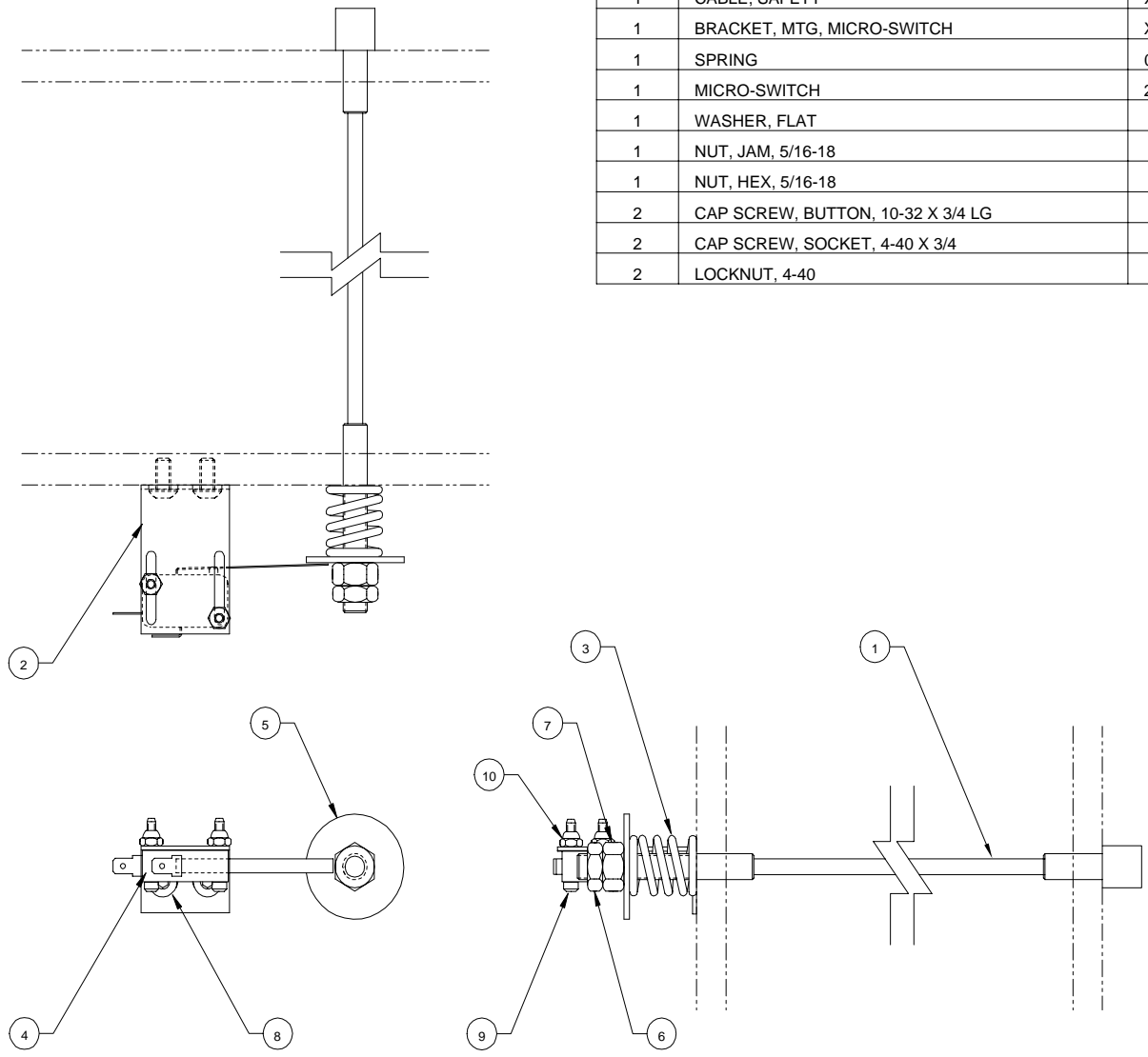


-066 ASSEMBLY

SCALE: 1/1

UNLESS OTHERWISE SPECIFIED TOLERANCE		Pro-Tech Engineering	
FINISH	TOL.	2117 N. Slaughter Rd. Madison, Wisconsin 53704 Phone (608) 246-8844 Fax (608) 246-4800	
SOB	P. 1584	TITLE	
SMK	P. 1581	VALVE, AIR, SOLENOID	
SK	P. 1581	ORCA II	
SK	P. 1510	DATE	DWG SCALE: DWG
SK	P. 1555	2-15-94	C1 001-066
REVISION	ANGLE	DATE	DWG SCALE: DWG
	10	P.R.	

REQ'D	DESCRIPTION	PART NO.	ITEM
1	CABLE, SAFETY	X93-0011	1
1	BRACKET, MTG, MICRO-SWITCH	X92-0114	2
1	SPRING	089-140	3
1	MICRO-SWITCH	214-330	4
1	WASHER, FLAT	-	5
1	NUT, JAM, 5/16-18	-	6
1	NUT, HEX, 5/16-18	-	7
2	CAP SCREW, BUTTON, 10-32 X 3/4 LG	-	8
2	CAP SCREW, SOCKET, 4-40 X 3/4	-	9
2	LOCKNUT, 4-40	-	10

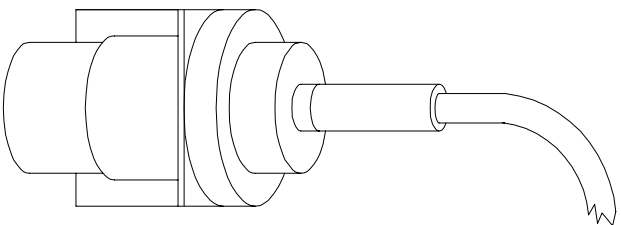
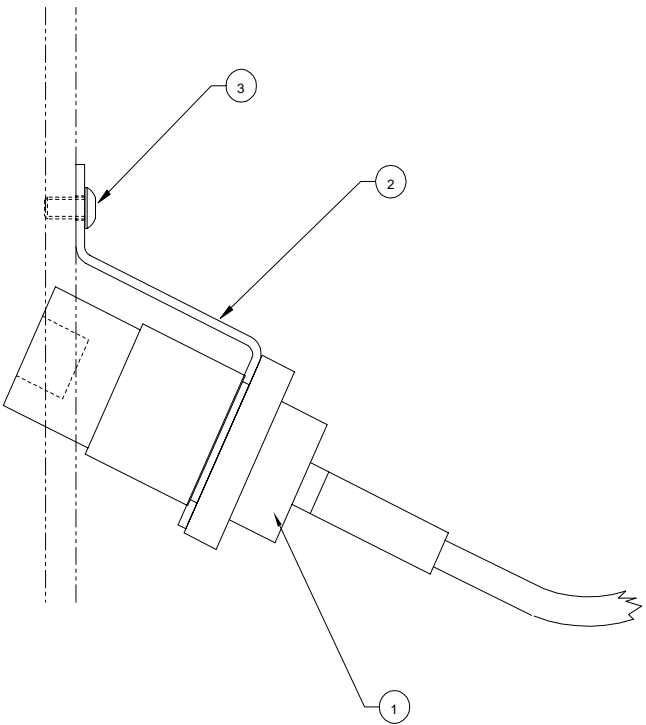


-069 ASSEMBLY

SCALE: 1/1

UNLESS OTHERWISE SPECIFIED				TOLERANCE				PRO-TECH ENGINEERING			
FINISH	TOL.	FINISH	PRO-TECH ENGINEERING	2117 N. SToughton Rd. Madison, Wisconsin 53704				Phone (608) 248-8844 Fax (608) 248-4885			
ASSEMBLY	ASSEMBLY	ASSEMBLY	ASSEMBLY	TITLE				CABLE, SAFETY			
ASSEMBLY	ASSEMBLY	ASSEMBLY	ASSEMBLY	DATE				2-18-94			
ASSEMBLY	ASSEMBLY	ASSEMBLY	ASSEMBLY	DRAWN BY				C1			
ASSEMBLY	ASSEMBLY	ASSEMBLY	ASSEMBLY	DWG SCALE				001-069			

REQ'D	DESCRIPTION	PART NO.	ITEM
1	SENSOR, INFRARED	230150	1
1	BRACKET, MTG, SENSOR	X93-0018	2
2	CAP SCREW, BUTTON, 1/4-20 X 1/2 LG	-	3

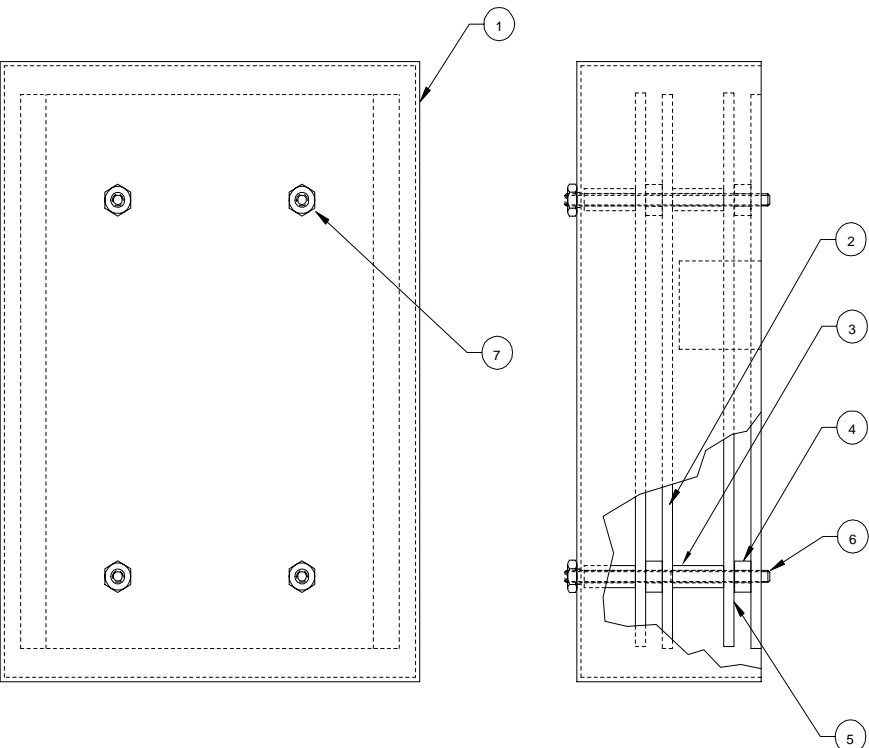
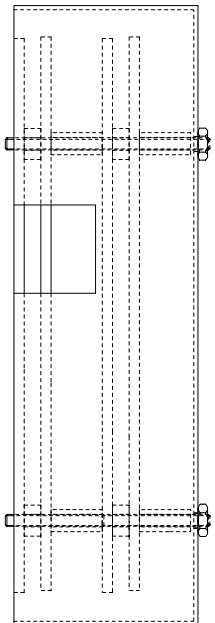
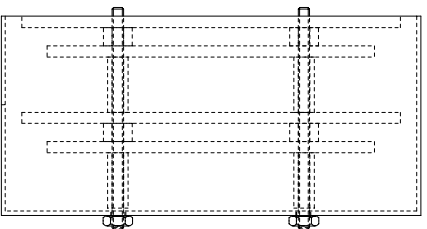


-070 ASSEMBLY

SCALE: 1/1

UNLESS OTHERWISE SPECIFIED TOLERANCE		Pro-Tech Engineering 2117 N. Stoughton Rd., Madison, Wisconsin 53704 Phone (608) 245-0541 Fax (608) 245-0500	
DIM. FRACTIONS .125 .250 .500 1.000 2.000 5.000 10.000 25.000 50.000 100.000	TOL. .005 .010 .015 .020 .030 .040 .050 .060 .070 .080 .090 .100 .125 .150 .175 .200 .250 .300 .350 .400 .450 .500 .600 .700 .800 .900 1.000 1.250 1.500 2.000 2.500 3.000 4.000 5.000 6.000 8.000 10.000 15.000 20.000 30.000 40.000 50.000 60.000 80.000 100.000	FINISH RB RE 12.5 15.0 20.0 25.0 30.0 40.0 50.0 60.0 80.0 100.0 125.0 150.0 200.0 250.0 300.0 400.0 500.0 600.0 800.0 1000.0	TITLE SENSOR, INFRARED ORCA II
ANGLE B 10 15 20 25 30 45 60 75 90 120 150 180	DATE 2-21-94	DRAWN BY P.R.	DWG SCALE C1
			PNO 001-070

REQ'D	DESCRIPTION	PART NO.	ITEM
1	COVER, IR ELECTRONICS	X93-0117	1
2	PANEL, MTG, IR ELECTRONICS	X93-0050	2
8	STANDOFF, NYLON, .14 ID X .25 OD X .63 LG	-	3
8	NUT, NYLON, 6-32	-	4
2	BOARD, IR ELECTRONICS	230150	5
4	STUD, 6-32 X 2-1/2 LG	-	6
4	NUT, NYLON, 6-32	-	7



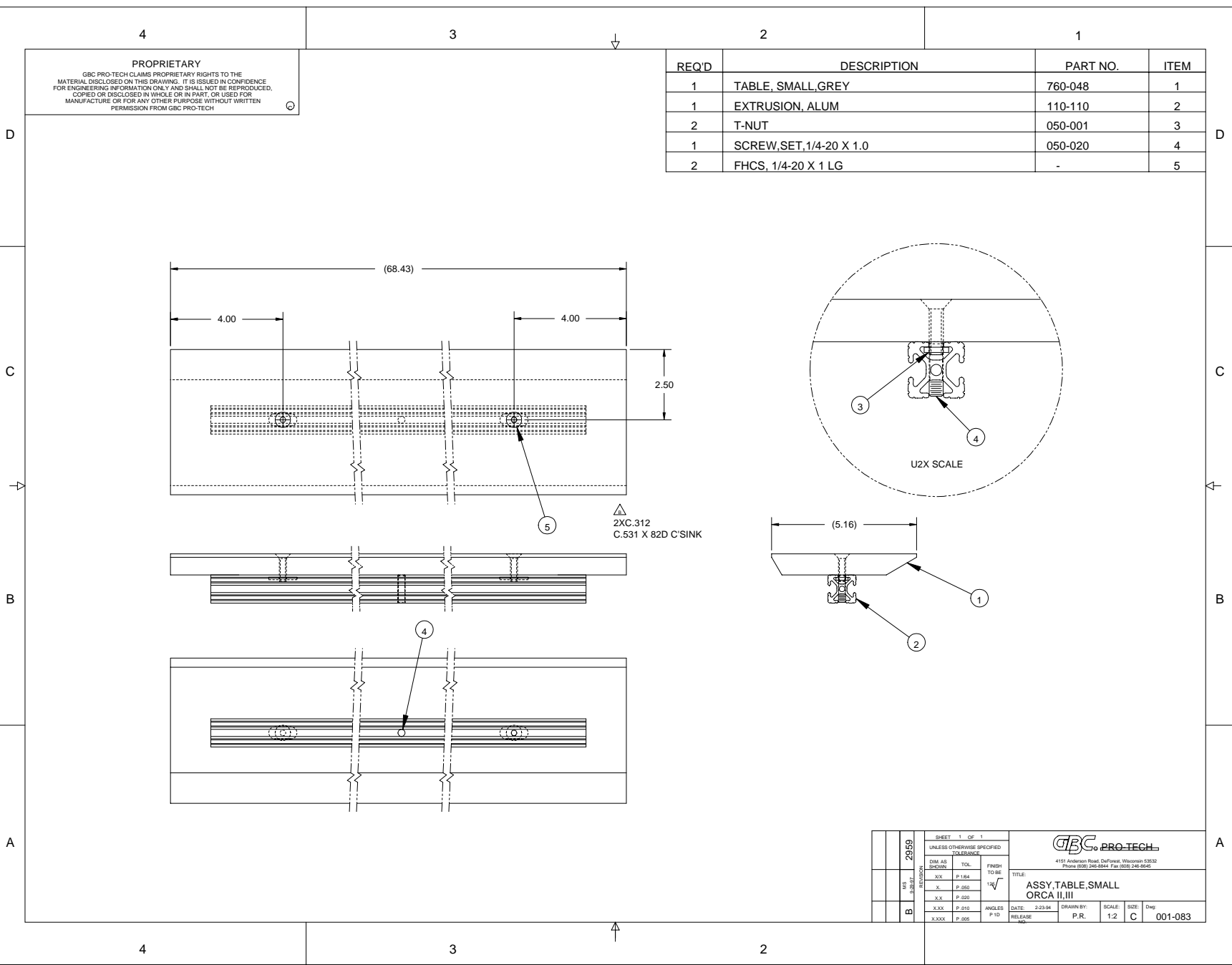
-071 ASSEMBLY

SCALE: 1/1

UNLESS OTHERWISE SPECIFIED TOLERANCE		TOL.		FINISH		PRO-TECH ENGINEERING	
XX	F.154					2117 N. Slaughter Rd. Madison, Wisconsin 53704 Phone (608) 246-8844 Fax (608) 246-4685	
X	F.250					TITLE: PANEL, IR SENSOR ORCA II	
XX	F.350					DATE: 2-22-94	DRW. BY: P.R.
XXX	F.510					ANGLES: P.10	DWG. SCALE: C1
XXXX	F.655						Dep: 001-071

REQ'D	DESCRIPTION	PART NO.	ITEM
1	TABLE, SMALL, GREY	760-048	1
1	EXTRUSION, ALUM	110-110	2
2	T-NUT	050-001	3
1	SCREW, SET, 1/4-20 X 1.0	050-020	4
2	FHCS, 1/4-20 X 1 LG	-	5

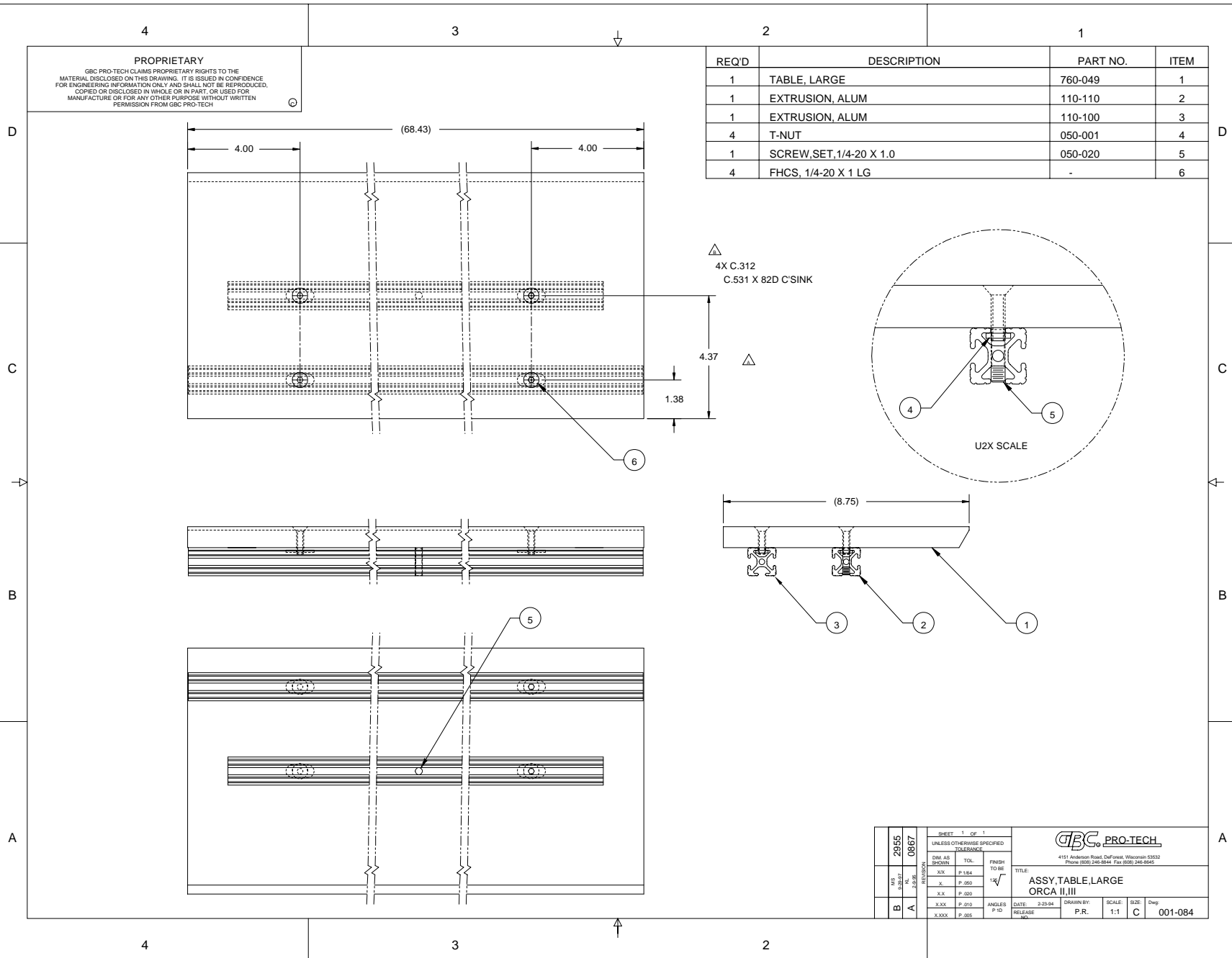
PROPRIETARY
 GBC PRO-TECH CLAIMS PROPRIETARY RIGHTS TO THE MATERIAL DISCLOSED ON THIS DRAWING. IT IS ISSUED IN CONFIDENCE FOR ENGINEERING INFORMATION ONLY AND SHALL NOT BE REPRODUCED, COPIED OR DISCLOSED IN WHOLE OR IN PART, OR USED FOR MANUFACTURE OR FOR ANY OTHER PURPOSE WITHOUT WRITTEN PERMISSION FROM GBC PRO-TECH



SHEET 1 OF 1		GBC PRO-TECH	
UNLESS OTHERWISE SPECIFIED TOLERANCE		4151 Anderson Road, DuFour, Wisconsin 53522 Phone (800) 246-8144 Fax (800) 246-8152	
DIM AS SHOWN	TOL.	FINISH TO BE	TITLE
XX	P.184	✓	ASSY. TABLE, SMALL
X	P.050		ORCA II, III
XX	P.050		
XXX	P.010	ANGLES	DATE: 2-25-94
XXXX	P.005	P.10	RELEASE
DRAWN BY: P.R.		SCALE: 1:2	SIZE: C
DATE: 2-25-94		SIZE: C	Dwg: 001-083

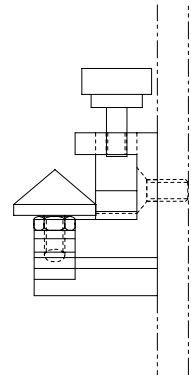
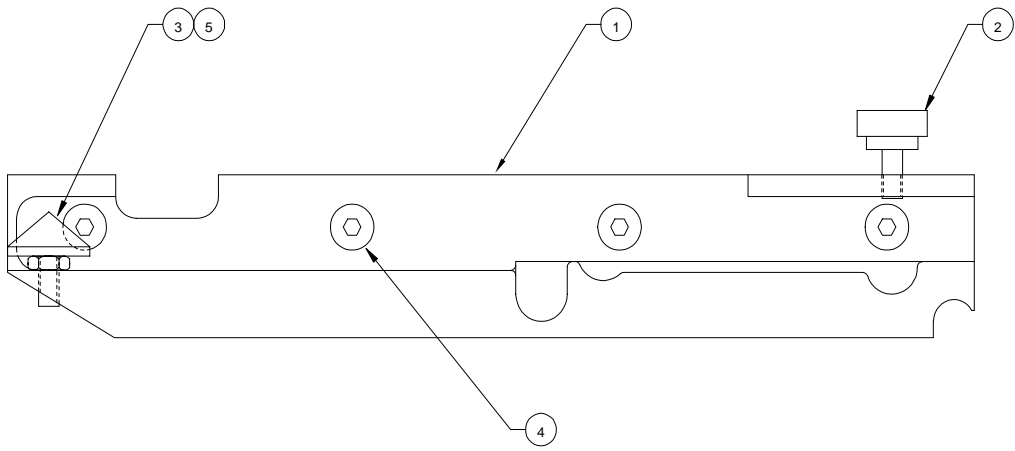
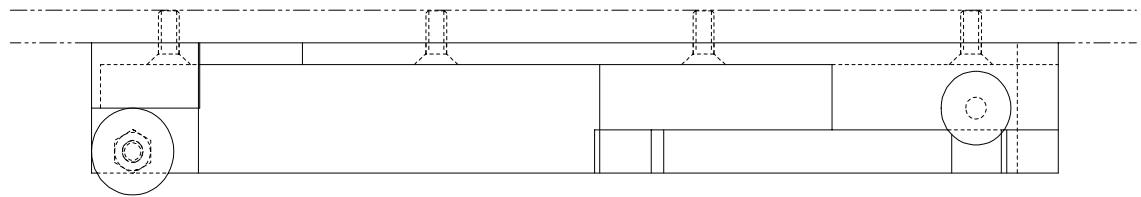
REQ'D	DESCRIPTION	PART NO.	ITEM
1	TABLE, LARGE	760-049	1
1	EXTRUSION, ALUM	110-110	2
1	EXTRUSION, ALUM	110-100	3
4	T-NUT	050-001	4
1	SCREW, SET, 1/4-20 X 1.0	050-020	5
4	FHCS, 1/4-20 X 1 LG	-	6

PROPRIETARY
 GBC PRO-TECH CLAIMS PROPRIETARY RIGHTS TO THE MATERIAL DISCLOSED ON THIS DRAWING. IT IS ISSUED IN CONFIDENCE FOR ENGINEERING INFORMATION ONLY AND SHALL NOT BE REPRODUCED, COPIED OR DISCLOSED IN WHOLE OR IN PART, OR USED FOR MANUFACTURE OR FOR ANY OTHER PURPOSE WITHOUT WRITTEN PERMISSION FROM GBC PRO-TECH



SHEET 1 OF 1		UNLESS OTHERWISE SPECIFIED TOLERANCE		GBC PRO-TECH	
DIM. AS SHOWN	TOL.	FINISH TO BE	4151 Anderson Road, Duforist, Wisconsin 53532 Phone (608) 246-8844, Fax (608) 246-8847		
.XX	P-.164	1X	TITLE: ASSY. TABLE, LARGE		
X	P-.050		ORCA II, III		
.XX	P-.050		DRAWN BY: P.R.		
X.XX	P-.010	ANGLE	DATE: 2-23-94	SCALE: 1:1	SIZE: C
X.XXX	P-.005	RELEASE		Dwg: 001-084	

REQ'D	DESCRIPTION	PART NO.	ITEM
1	BRACKET, TABLE, FRONT, RT	510-056	1
1	KNOB, LOCK-DOWN, TABLE	465-200	2
1	BUMPER, RUBBER	465-500	3
4	SCREW, ALLEN, FLT HD, 1/4-20 X 1/2	-	4
1	NUT, 1/4-20	-	5

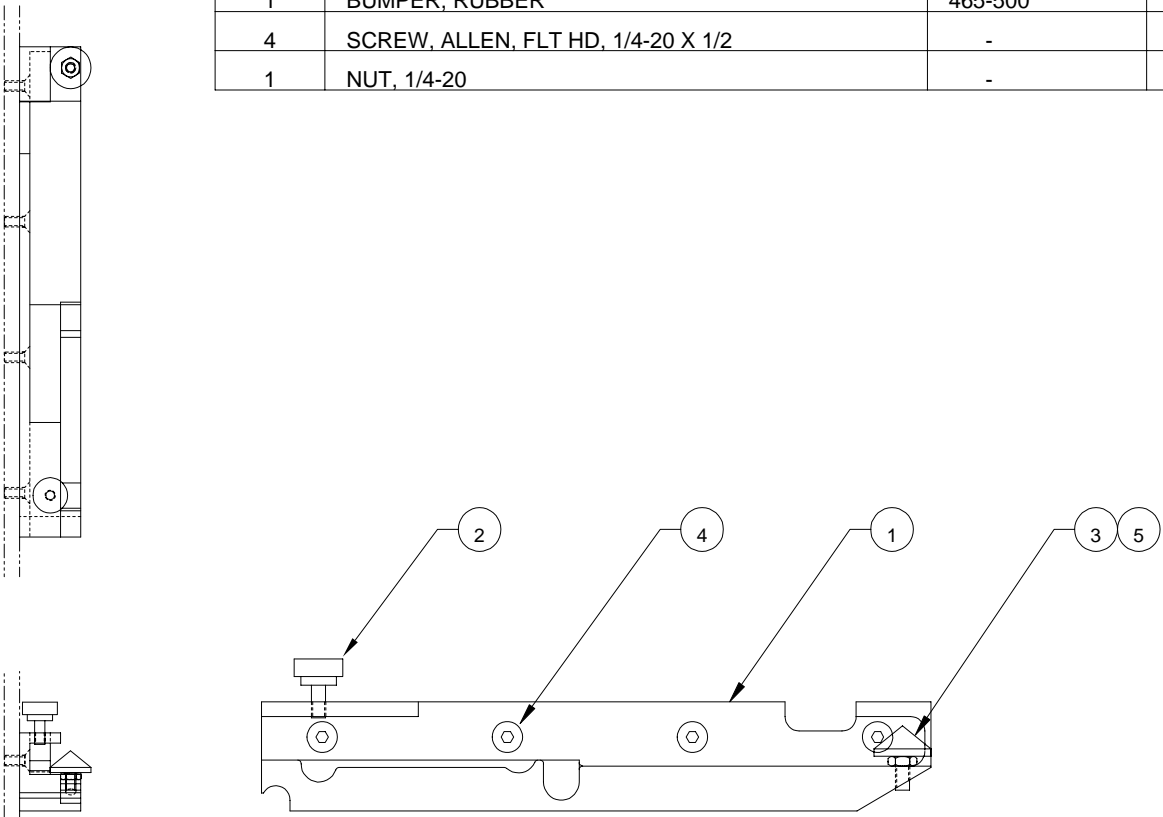


-085 ASSEMBLY

SCALE: 1/1

UNLESS OTHERWISE SPECIFIED TOLERANCE		FINISH TO BE		DATE		DRAWN BY		DWG SCALE		Dep	
ØM AG	TOL	Ø	√	2-23-94	P.R.	C1					001-085
ØM AG	F .154	Ø	√								
X	F .050	X	√								
X	F .020	X	√								
X	F .010	X	√								
X	F .005	X	√								

REQ'D	DESCRIPTION	PART NO.	ITEM
1	BRACKET, TABLE, FRONT, LF	510-055	1
1	KNOB, LOCK-DOWN, TABLE	465-200	2
1	BUMPER, RUBBER	465-500	3
4	SCREW, ALLEN, FLT HD, 1/4-20 X 1/2	-	4
1	NUT, 1/4-20	-	5

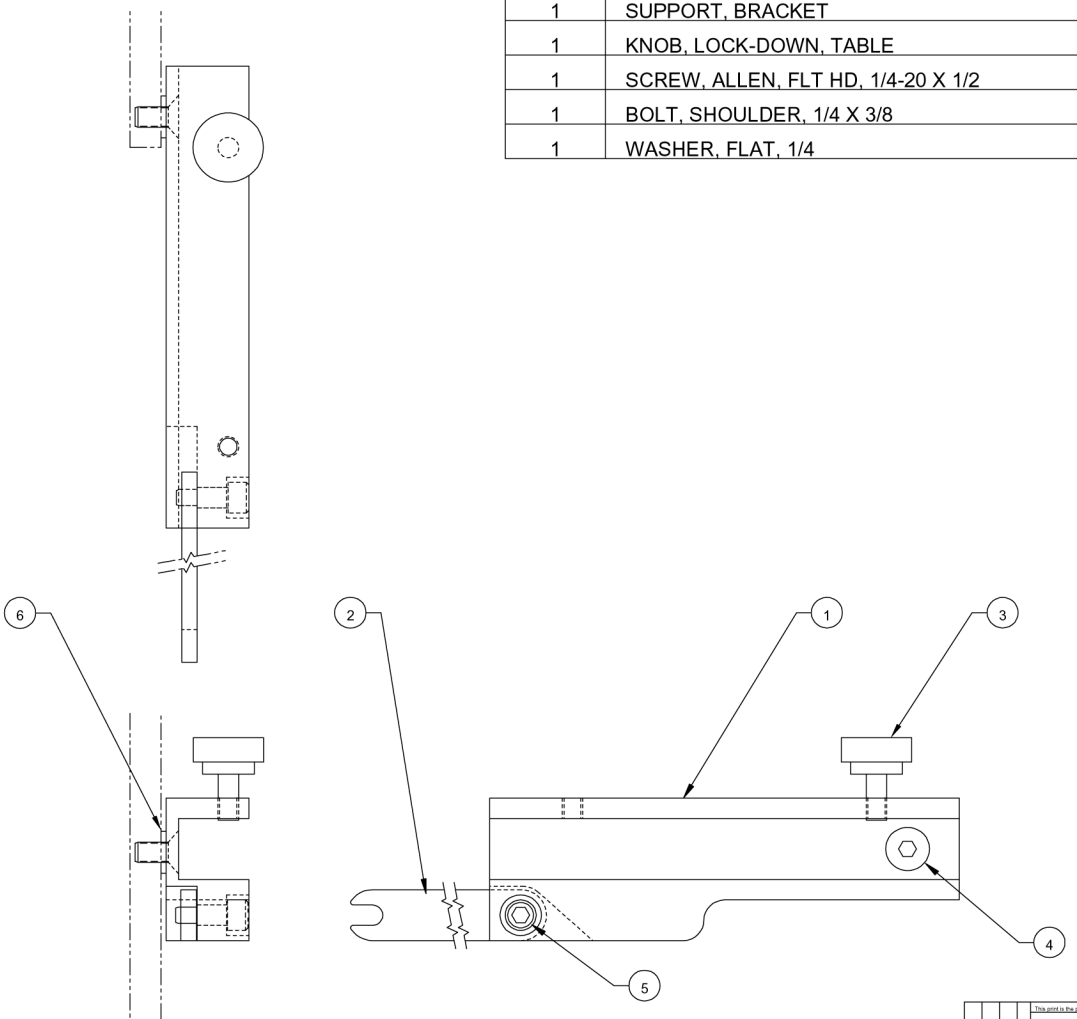


-086 ASSEMBLY

SCALE: 1/2

UNLESS OTHERWISE SPECIFIED TOLERANCE				Pro-Tech Engineering 2117 N. Douglas Rd., Madison, Wisconsin 53704 Phone (608) 248-8944 Fax (608) 248-6885	
FRONT	TOL.	FRONT	TO BE	TITLE: BRACKET, TABLE, FRONT, LF ORCA II, ORCA III	
XXX	P.154	✓		DATE: 2-23-94	DRAWN BY: P.R.
X	P.050			ENGR SCALE: CZ	Dep: 001-086
XX	P.020				
XXX	P.010	ANGLES			
XXX	P.005	P.10			

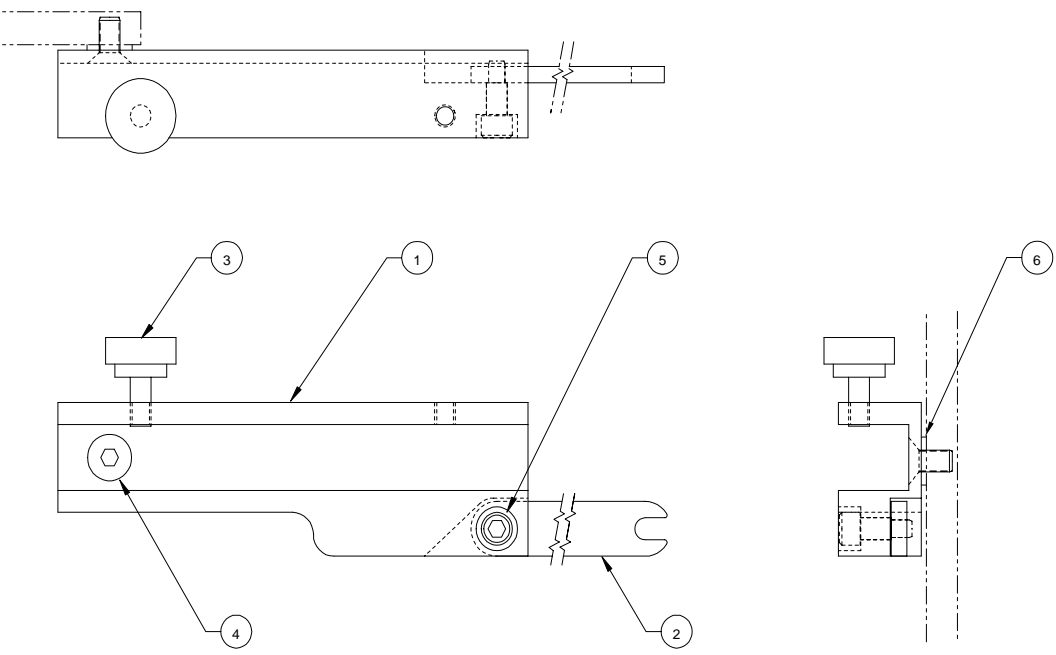
REQ'D	DESCRIPTION	PART NO.	ITEM
1	BRACKET, TABLE, REAR, RT	510-067	1
1	SUPPORT, BRACKET	510086	2
1	KNOB, LOCK-DOWN, TABLE	465-200	3
1	SCREW, ALLEN, FLT HD, 1/4-20 X 1/2	-	4
1	BOLT, SHOULDER, 1/4 X 3/8	-	5
1	WASHER, FLAT, 1/4	-	6



-087 ASSEMBLY
SCALE: 1/1

UNLESS OTHERWISE SPECIFIED TOLERANCE				Pro-Tech Engineering 2117 N. Stoughton Rd., Madison, Wisconsin 53704 Phone (608) 248-8344 Fax (608) 248-4893			
ASSEMBLY	FINISH	DATE	DRAWN BY:	DWG SCALE:	TITLE:		
ASSEMBLY	ASSEMBLY	2-24-94	P.R.	C1	BRACKET, TABLE, REAR, RT ORCA III		
ASSEMBLY	ASSEMBLY				001-087		

REQ'D	DESCRIPTION	PART NO.	ITEM
1	BRACKET, TABLE, REAR, LF	510-069	1
1	SUPPORT, BRACKET	X92-0125	2
1	KNOB, LOCK-DOWN, TABLE	465-200	3
1	SCREW, ALLEN, FLT HD, 1/4-20 X 1/2 LG	-	4
1	BOLT, SHOULDER, 1/4 X 3/8	-	5
1	WASHER, FLAT, 1/4	-	6

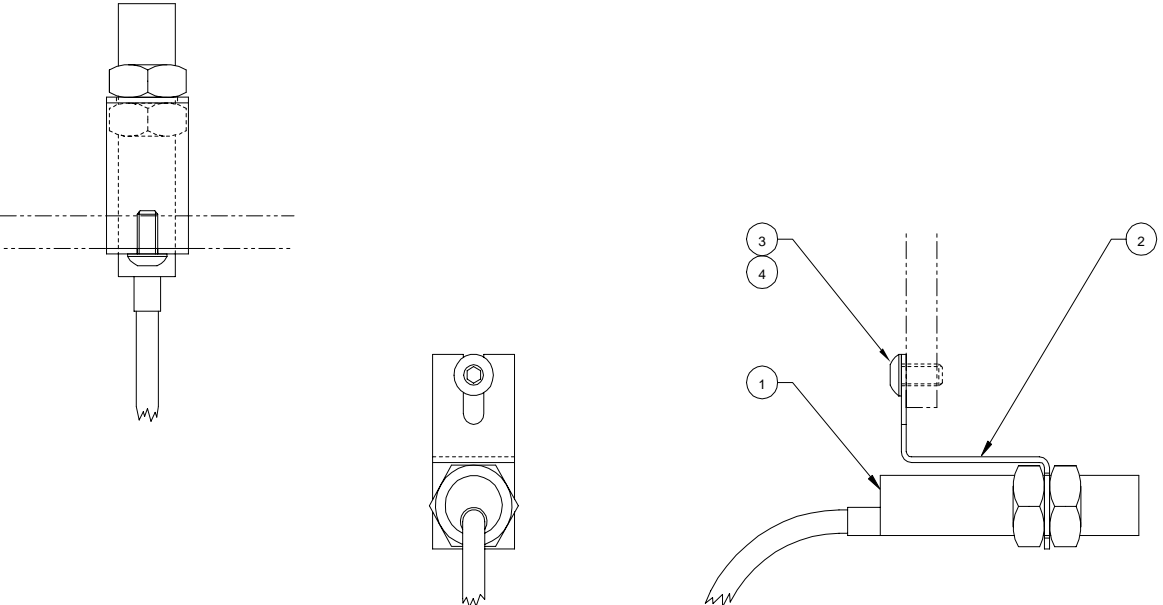


-088 ASSEMBLY

SCALE: 1/1

<small>This print is the property of PRO-TECH ENGR. The information herein is intended for confidential use.</small>			
UNLESS OTHERWISE SPECIFIED TOLERANCE		Pro-Tech Engineering 2117 N. Saughton Rd. Madison, Wisconsin 53704 Phone (608) 246-8844 Fax (608) 246-8828	
DIM. AS SHOWN	TOL.	FINISH TO BE	TITLE: BRACKET, TABLE, REAR, LF ORCA III
.XX	F .125	TO	DATE: 2-24-94
.X	F .250	ANGLES	DRAWN BY: P.R.
.XX	F .500	F TO	ENG SCALE: C1
.XXX	F .005	F TO	Dwg: 001-088

REQ'D	DESCRIPTION	PART NO.	ITEM
1	PHOTO EYE	250-100	1
1	BRACKET, PHOTO EYE	510-334	2
1	CAP SCREW, BUTTON, 1/4-20 X 3/8 LG	-	3
1	WASHER, SERRATED, 1/4	-	4



-089 ASSEMBLY

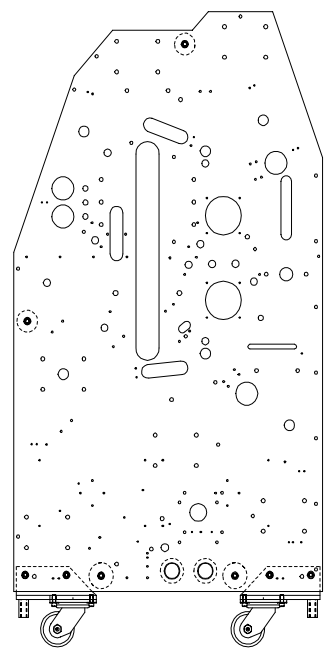
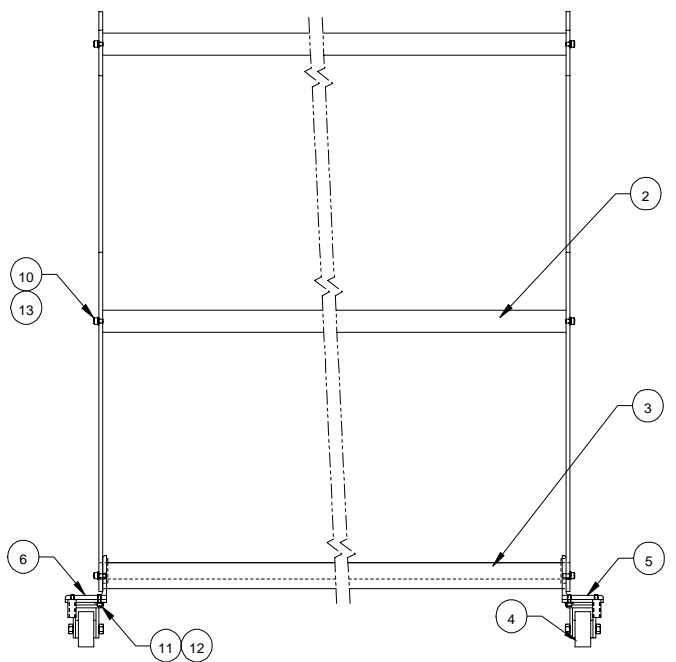
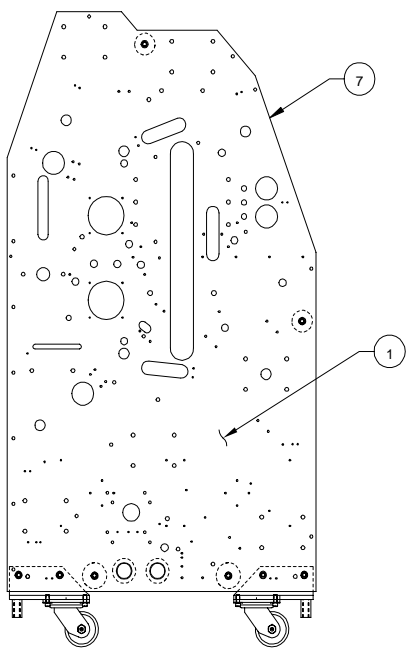
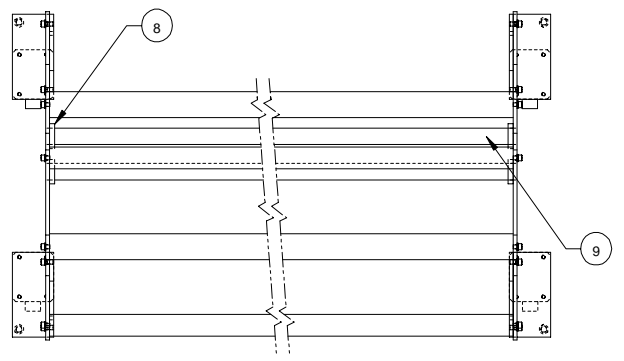
SCALE: 1/1

UNLESS OTHERWISE SPECIFIED		TOLERANCE		FINISH		TITLE	
ONE AS SHOWN							
X	P.154						
X	P.050						
X	P.050						
X	P.010						
X	P.050						
ANGLES	DATE	DRAWN BY:	DESIGN SCALE:	REV			
P-ID	2-22-94	P.R.	C1	001-089			

Pro-Tech Engineering
2117 N. Shepley St., Madison, Wisconsin
Phone (608) 245-9889 Fax (608) 245-6557

PHOTO EYE
ORCA II

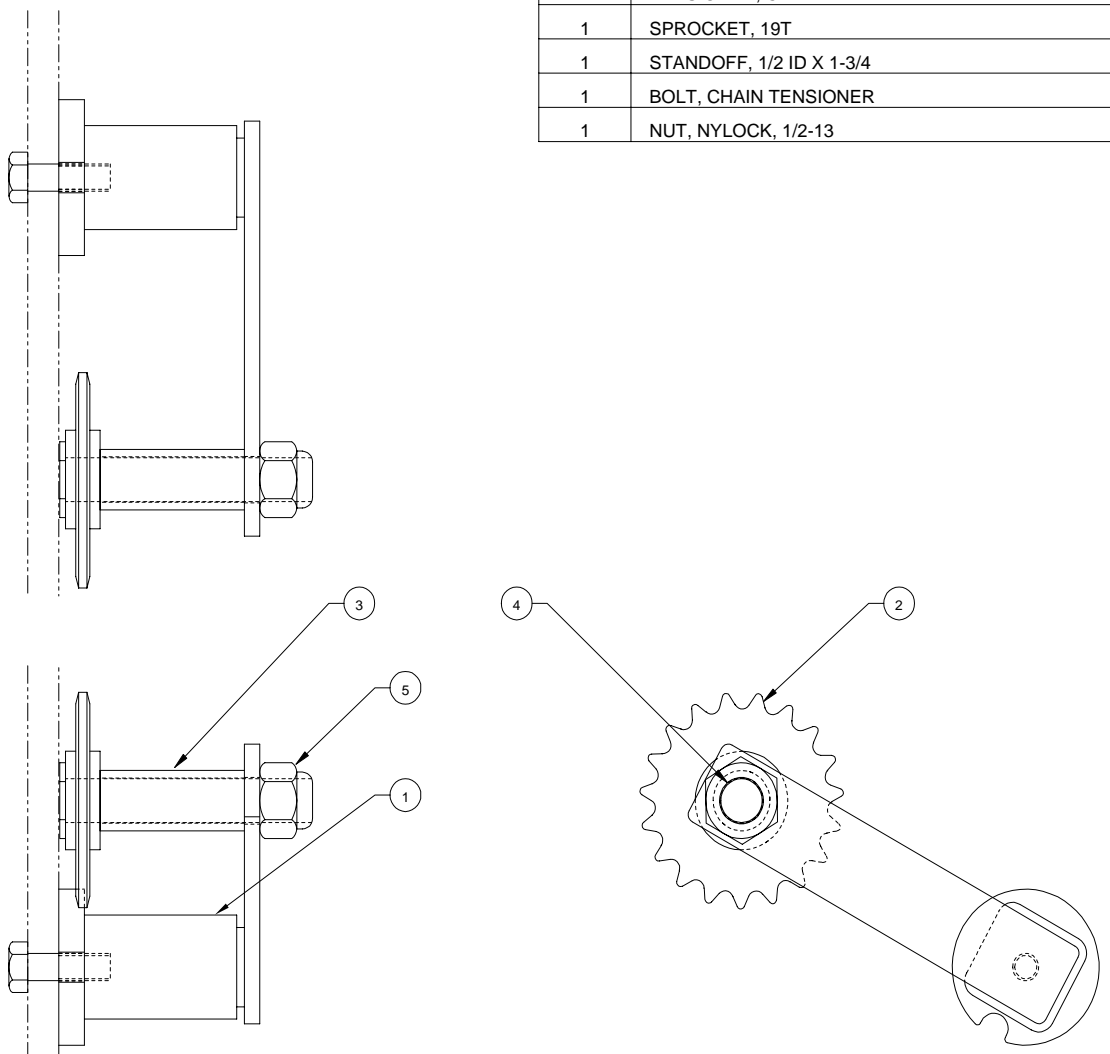
REQD	DESCRIPTION	PART NO.	ITEM
2	SIDE FRAME	X92-0100	1
2	TIE BAR, 2" X 69"	770-395	2
2	TIE BAR, 2-3/8" X 69"	770-400	3
4	WHEEL, CASTER, STEEL	470-120	4
2	FOOT, LF-RR, RT-FR	X93-0003	5
2	FOOT, LF-FR, RT-RR	X93-0004	6
A/R	TRIM	450-020	7
4	COLLAR, LOCK, 1-1/2 I.D.	290-640	8
2	CONDUIT	540-401	9
16	CAP SCREW, SOCKET, 3/8-16 X 1 LG	-	10
16	CAP SCREW, SOCKET, 5/16-18 X 3/4 LG	-	11
16	WASHER, FLAT, 5/16	-	12
8	WASHER, LOCK	-	13



-091 ASSEMBLY
SCALE: 1/8

UNLESS OTHERWISE SPECIFIED TOLERANCE				Pro-Tech Engineering 2117 N. Stoughton Rd., Madison, Wisconsin 53704 Phone (608) 240-8044 Fax (608) 240-4000			
DIM AS SHOWN	TOL.	FRESH TO BE	TITLE	DRAWN BY	DATE	DWG SCALE	REV
XXX	P.104	✓	FRAME ORCA II	P.R.	2-28-94	CS	001-091
XXX	P.050						
XXX	P.050						
XXX	P.010						
XXX	P.050						

REQ'D	DESCRIPTION	PART NO.	ITEM
1	TENSIONER, CHAIN	440-150	1
1	SPROCKET, 19T	440-130	2
1	STANDOFF, 1/2 ID X 1-3/4	755-000	3
1	BOLT, CHAIN TENSIONER	X93-0047	4
1	NUT, NYLOCK, 1/2-13	-	5

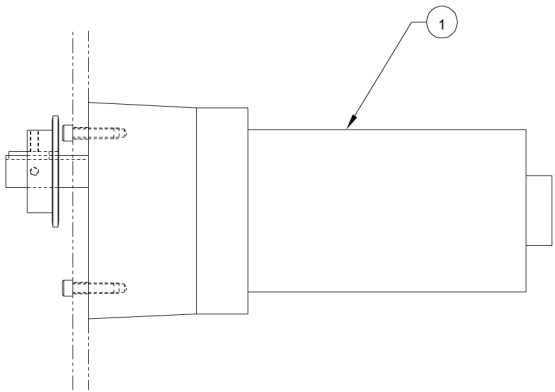
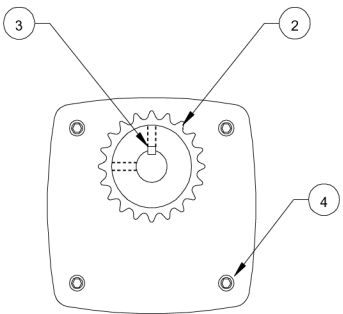
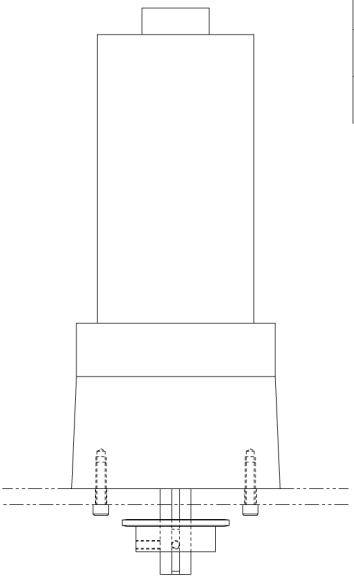


-096 ASSEMBLY

SCALE: 1/1

UNLESS OTHERWISE SPECIFIED TOLERANCE		Pro-Tech Engineering 2117 N. Soughden Rd. Madison, Wisconsin 53704 Phone (608) 248-8844 Fax (608) 248-8845	
DIM. AS SHOWN .XX .X .XX .XXX	TOL. ± 0.004 ± 0.002 ± 0.002 ± 0.005	FINISH TO BE TO √	TITLE: TENSIONER, CHAIN ORCA II, ORCA III
DATE: 3-3-94	ANGLES: P TO	DRAWN BY: P.R.	DWG SCALE: C1 Dwg: 001-096

REQ'D	DESCRIPTION	PART NO.	ITEM
1	MOTOR + KIT (USE 005040)	425 - 003	1
1	SPROCKET, 20T	435-255	2
1	KEY, 3/16 X 3/16 STOCK	-	3
4	CAP SCREW, SOCKET, 1/4-28 X 1 LG	-	4

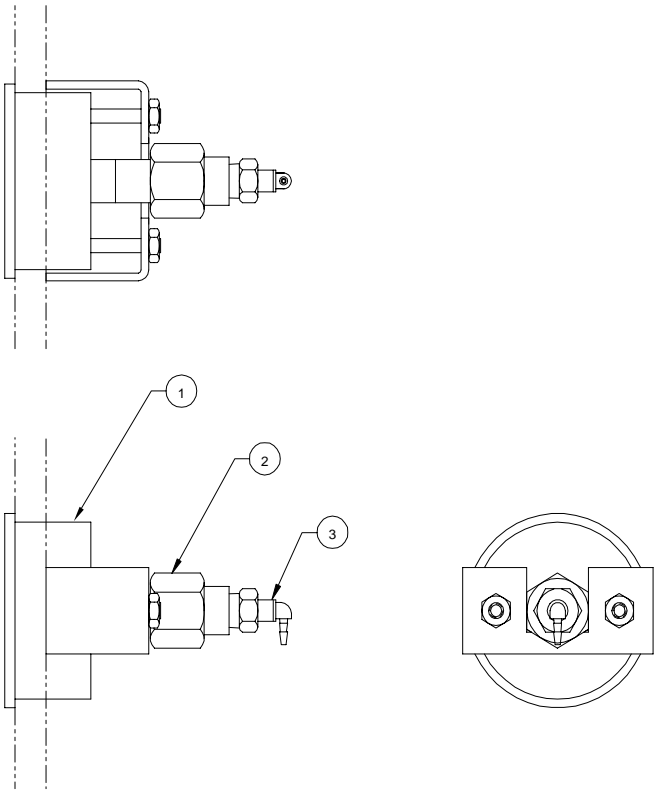


-097 ASSEMBLY

SCALE: 1/2

UNLESS OTHERWISE SPECIFIED TOLERANCE:				Pro-Tech Engineering 2117 N. Douglas Rd. Maricopa, Arizona 85139 Phone (602) 248-8844 Fax (602) 248-8889			
SEE AS SHOWN	TOL.	FINISH	TO BE	TITLE: MOTOR ORCA II			
XX	F 164		✓	DATE: 3-4-94	DRAWN BY: P.R.	DWG SCALE: CZ	Dwg 001-097
X	F 500						
XX	F 330						
XXX	F 210	ANGLES					
XXXX	F 205	F ID.					

REQ'D	DESCRIPTION	PART NO.	ITEM
1	GAUGE, PRESSURE, 0-60 PSI	340-112	1
1	FITTING, AIR, REDUCER, 1/4 X 1/8	330-610	2
1	FITTING, AIR, SWIVEL, 1/16	330-810	3

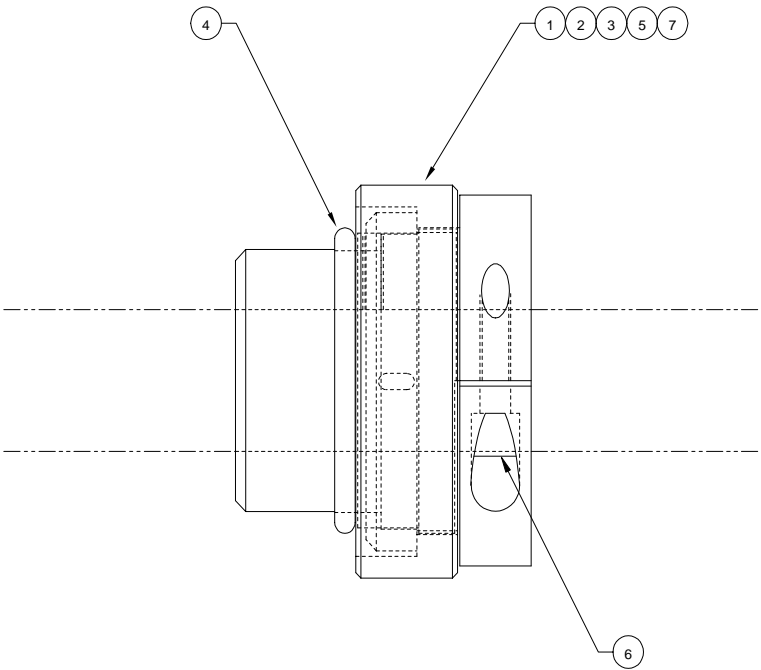


-099 ASSEMBLY

SCALE: 1/1

UNLESS OTHERWISE SPECIFIED TOLERANCE		FINISH		TITLE		DATE		DRAWN BY:		DWG SCALE:		PNO	
IN	TOL.	TO BE		Pro-Tech Engineering		3-4-94		P.R.		C1		001-099	
1/16				2117 N. Stoughton Rd. Madison, Wisconsin 53704									
1/32				Phone (608) 246-8844 Fax (608) 246-4935									
1/64				GAUGE, PRESS, TENSION IDLER									
1/32				ORCA II									
1/64													
1/32													
1/64													
1/32													
1/64													

REQ'D	DESCRIPTION	PART NO.	ITEM
1	COLLAR, BRAKE	515-050	1
1	COLLAR, ADJUST	515-051	2
1	COLLAR, LOCK, BRAKE	515-053	3
1	O-RING, 2-7/8	480-010	4
1	SET SCREW, 1/4-20 HALF DOG PT	-	5
1	CAP SCREW, SOCKET, 3/8-24 X 1-1/4	-	6
1	SPRING, WAVE	089-120	7

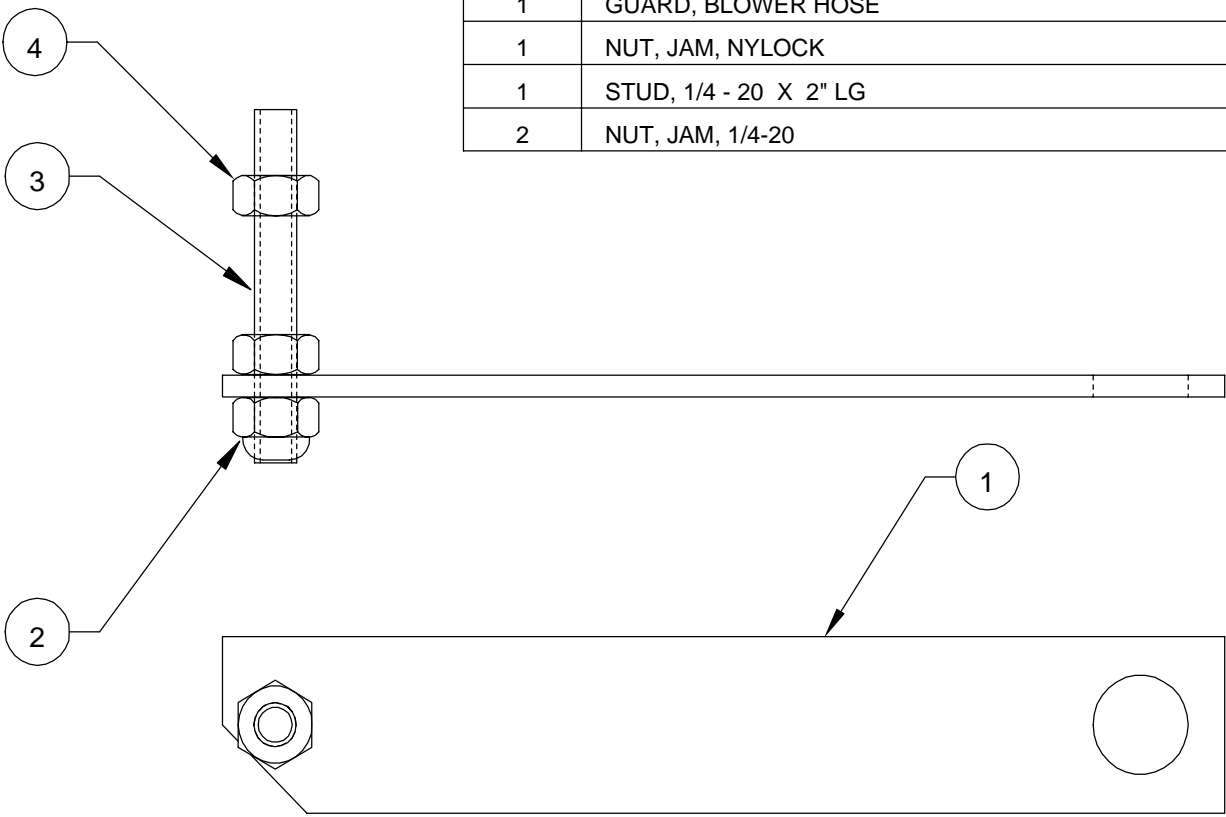


-100 ASSEMBLY

SCALE: 1/1

UNLESS OTHERWISE SPECIFIED TOLERANCE				Pro-Tech Engineering 2117 N. Stoughton Rd. Madison, Wisconsin 53704 Phone (608) 248-8844 Fax (608) 248-8846				
DIM. AS SHOWN	TOL.	FINISH	DATE	DRAWN BY:	DWG SCALE:	Dwg	001-100	
	XX	P.164						TITLE: BRAKE, UNWIND ORCA II, ORCA III
	X	P.050						
	XX	P.020						
XXX	P.010	ANGLES	DATE	DRAWN BY:	DWG SCALE:	Dwg	001-100	
XXX	P.005	P.10	3-7-94	P.R.	C1			

REQ'D	DESCRIPTION	PART NO.	ITEM
1	GUARD, BLOWER HOSE	X93-0326	1
1	NUT, JAM, NYLOCK	-	2
1	STUD, 1/4 - 20 X 2" LG	-	3
2	NUT, JAM, 1/4-20	-	4

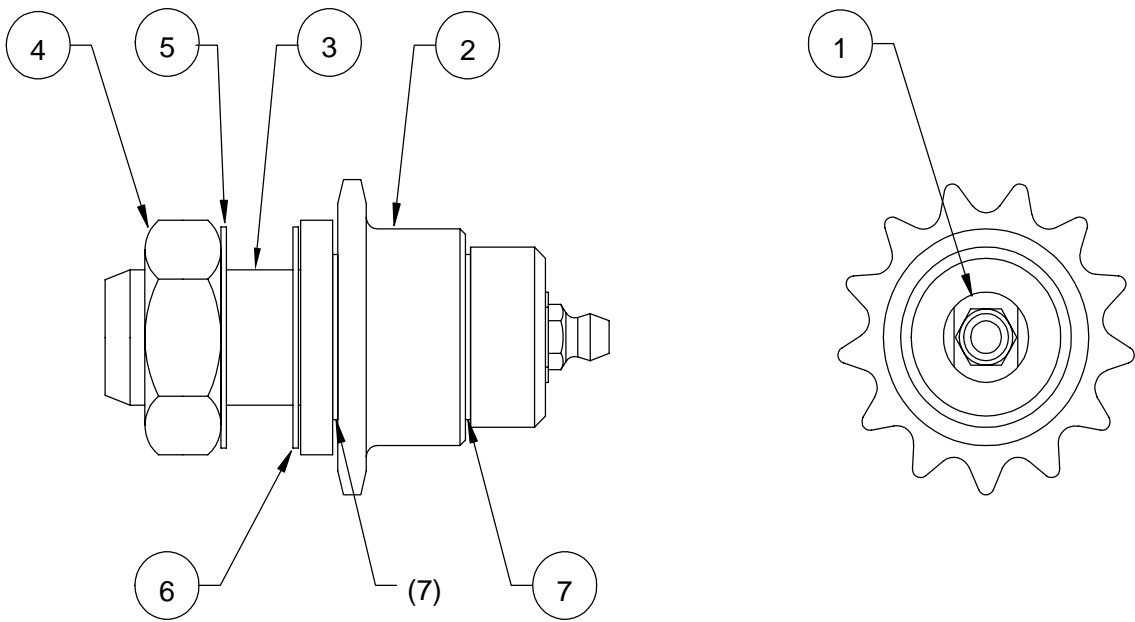


-101 ASSEMBLY

SCALE: 1/1

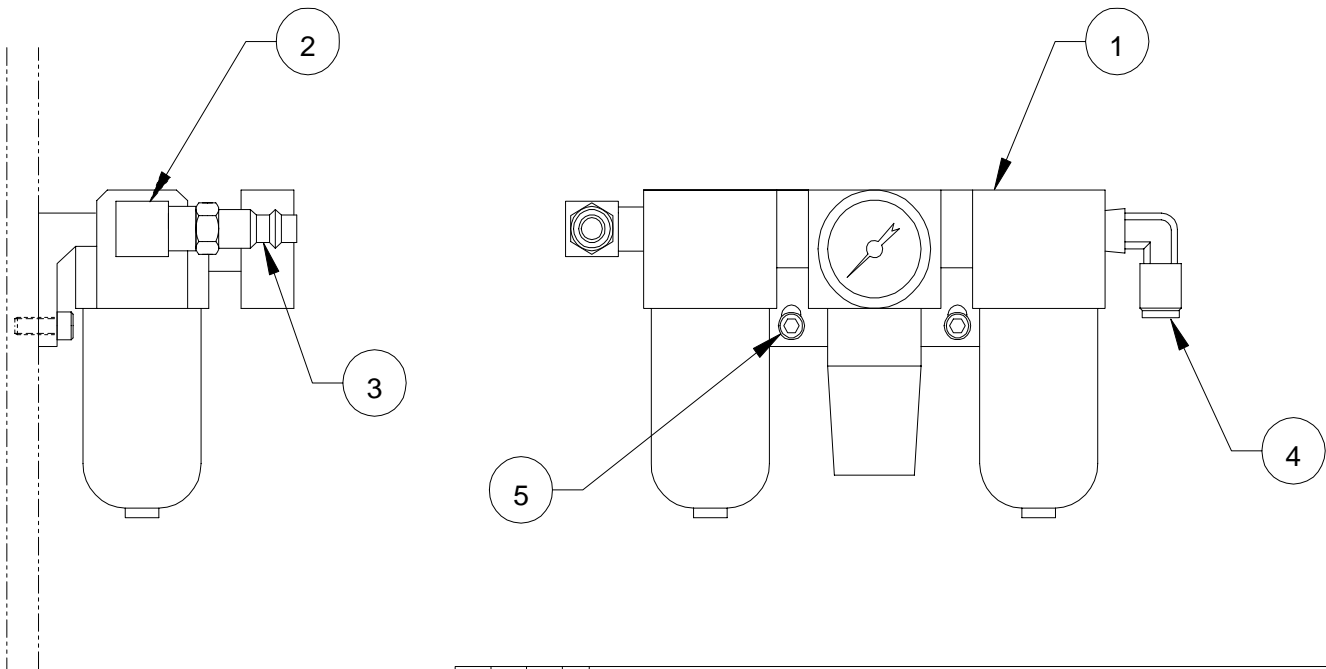
This print is the property of PRO-TECH ENGR. The information thereon is remitted in confidence.						
UNLESS OTHERWISE SPECIFIED TOLERANCE		Pro-Tech Engineering 2117 N. Stoughton Rd. Madison, Wisconsin 53704 Phone (608) 246-8844 Fax (608) 246-4685				
REVISION	DIM. AS SHOWN	TOL.	FINISH TO BE 12 5√			
	X/	P 1/64				
	X	P				
	X.	.050				
	X	.020				
X	P	ANGLES P 1D	DATE: 3-11-94	DRAWN BY: P.R.	DWG SCALE: A1	Dwg : 001-101
X.X	.010					
X	P					
X,XX	.005					
X						

REQ'D	DESCRIPTION	PART NO.	ITEM
1	SHAFT, IDLER	440-110	1
1	SPROCKET, 13T	440-125	2
1	BOLT, MOD., 3/4-16 X 1	505-002	3
1	NUT, JAM, 3/4-16	-	4
1	WASHER, THRUST	032-291	5
1	WASHER, STAR, INT. TOOTH, 3/4	068-002	6
2	WASHER, THRUST	032-130	7



This print is the property of PRO-TECH ENGR. The information thereon is remitted in confidence.						
UNLESS OTHERWISE SPECIFIED TOLERANCE		Pro-Tech Engineering 2117 N. Stoughton Rd. Madison, Wisconsin 53704 Phone (608) 246-8844 Fax (608) 246-4685				
DIM. AS SHOWN	TOL.			FINISH TO BE		
X/X	P 1/64	125√	TITLE: ASSEMBLY, SPROCKET, IDLER, ADJUSTABLE ORCA III			
X.	P .050					
X.X	P .020					
X.XX	P .010	ANGLES		DATE:	DRAWN BY:	DWG SCALE:
X.XXX	P .005	P 1D	5-6-93	RAS	A1	001-102

REQ'D	DESCRIPTION	PART NO.	ITEM
1	FILTER-LUBER-GAUGE, AIR	340-240	1
1	FITTING, AIR, STREET ELBOW, 1/4	330-760	2
1	COUPLER, AIR, Q/C, MALE	330-260	3
1	FITTING, AIR, MALE ELBOW, 4 X 4	330-730	4
2	CAP SCREW, SOCKET, 10-24 X 1/2	-	5

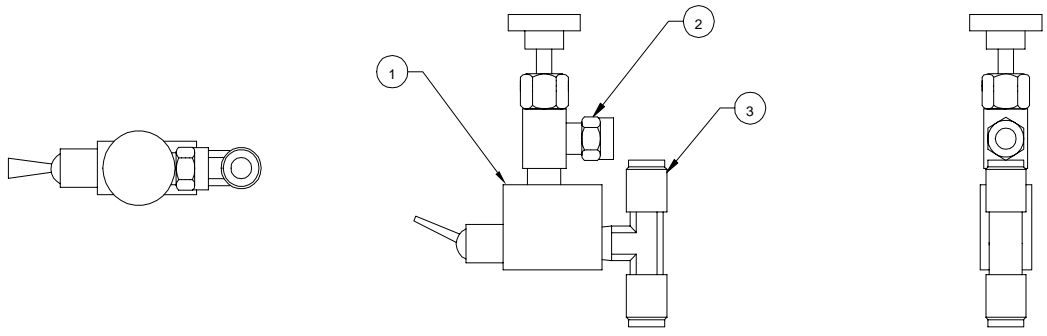


-103 ASSEMBLY

SCALE: 1/2

This print is the property of PRO-TECH ENGR. The information thereon is remitted in confidence.					
UNLESS OTHERWISE SPECIFIED TOLERANCE			Pro-Tech Engineering 2117 N. Stoughton Rd. Madison, Wisconsin 53704 Phone (608) 246-8844 Fax (608) 246-4685		
REVISION	DIM. AS SHOWN	TOL.	FINISH TO BE 125√	TITLE:	
	X/X	P 1/64		FILTER-LUBER, AIR	
	X.	P .050		ORCA II	
	X.X	P .020	ANGLES P 1D	DATE:	DRAWN BY:
	X.XX	P .010		3-11-94	P.R.
X.XXX	P .005	DWG SCALE:	Dwg:	001-103	
				A2	

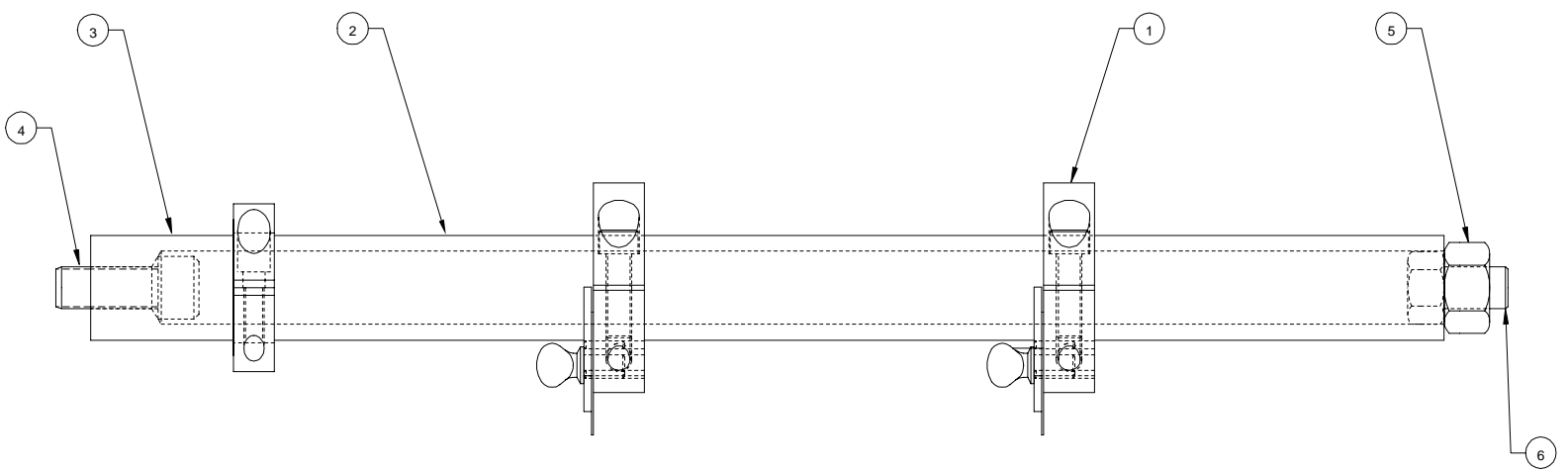
REQ'D	DESCRIPTION	PART NO.	ITEM
1	SWITCH, AIR	350-500	1
1	VALVE, AIR, 1/4 X 1/8 NPT	330-110	2
1	FITTING, AIR, BRANCH TEE 4 X 2	330-630	3



-108 ASSEMBLY
SCALE: 1/1

This part is the property of PRO-TECH ENGR. The information herein is verified as confidential.									
UNLESS OTHERWISE SPECIFIED TOLERANCE					Pro-Tech Engineering				
DIMS: AS SHOWN					2117 N. Douglas Rd., Madison, Wisconsin 53704				
X .125					Phone: (608) 245-8844 Fax: (608) 245-4550				
X .004					TITLE				
X .002					SWITCH, AIR, WEB				
X .002					ORCA II				
X .010					DATE: 3-16-94				
X .005					DRAWN BY: P.R.				
X .005					DWG. SCALE: C1				
X .005					Dwg. No: 001-108				

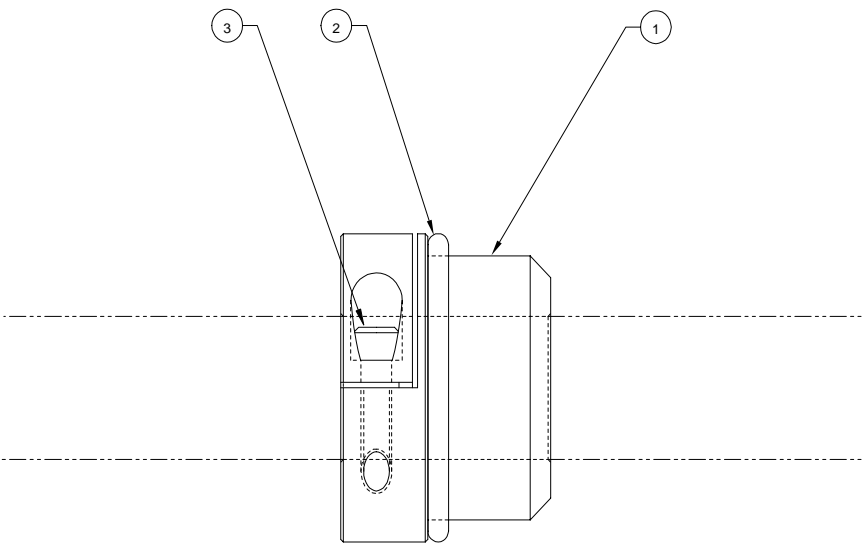
REQ'D	DESCRIPTION	PART NO.	ITEM
2	ASSY, BLADE, SLITTER	001-109	1
1	SHAFT, SLITTER	X93-0032	2
1	STANDOFF, HINGE COLLAR	755-550	3
1	CAP SCREW, SOCKET, 1/2-13 X 1-1/4	-	4
1	NUT, HEAVY, 1/2-13	-	5
1	BOLT, HEX, 1/2-13 X 3/4	-	6



-110 ASSEMBLY
SCALE: 1/1

UNLESS OTHERWISE SPECIFIED TOLERANCE				Pro-Tech Engineering 2117 N. Douglas Rd. Madison, Wisconsin 53704 Phone (608) 245-8844 Fax (608) 245-8645			
Ø	TOL.	FINISH	TITLE	DATE:	DRAWN BY:	DWG SCALE:	DWG
Ø	F 1/64	100 MP	SLITTER, OUTFEED ORCA II	3-22-94	P.R.	C1	001-110
X	F .005	✓					
X	F .010						
X	F .015						
X	F .020						
X	F .030						
X	F .050						

REQ'D	DESCRIPTION	PART NO.	ITEM
1	COLLAR, LOCK, CORE END	640-020	1
1	O-RING, 2-7/8	480-005	2
1	CAP SCREW, SOCKET, 3/8-24 X 1-1/4	-	3

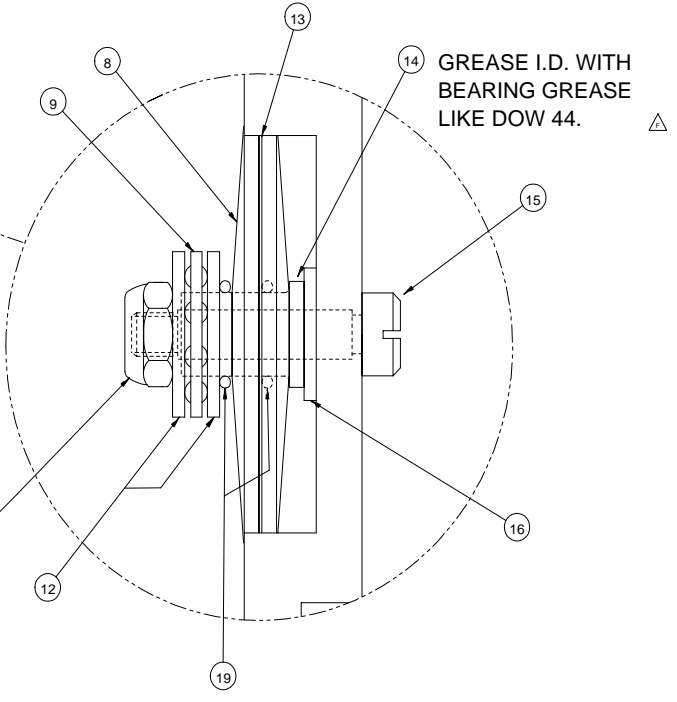
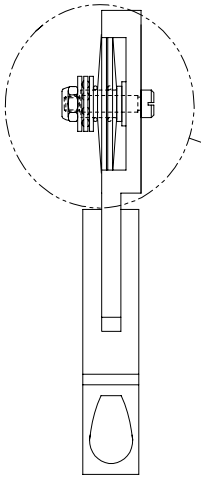
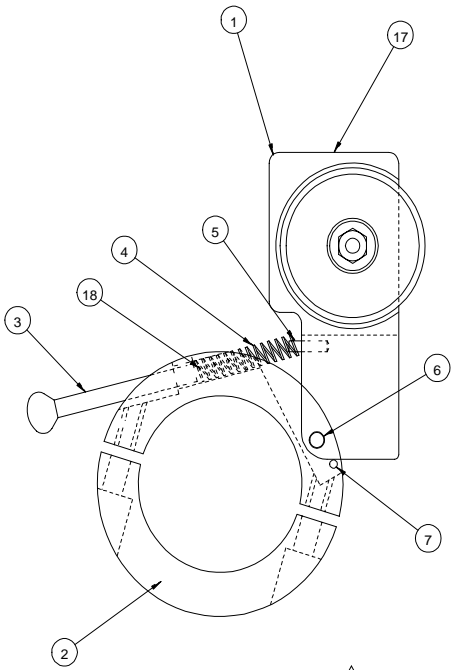


-114 ASSEMBLY

SCALE: 1/1

UNLESS OTHERWISE SPECIFIED TOLERANCE				THIS DRAWING IS THE PROPERTY OF PRO-TECH ENGINEERING. THE INFORMATION HEREON IS UNCLASSIFIED.			
FRONT TO BE	COLL	FINISH		Pro-Tech Engineering 2117 N. Daugherty Rd. Madison, Wisconsin 53704 Phone (608) 246-8844 Fax (608) 246-8845			
XXX P.154				TITLE: COLLAR, CORE END, UNWIND ORCA III			
XX P.250				DATE:	DRAWN BY:	DWG SCALE:	Dep
XX P.250				4-14-94	P.R.	C1	001-114
XXX P.210	ANGLES						
XXX P.205	P.10						

REQ'D	DESCRIPTION	PART NO.	ITEM
1	ARM, SLITTER	740-006	1
1	COLLAR, INFEED SLITTER	740-052	2
1	SCREW, THUMB	505-010	3
1	SPRING, TENSION	089-150	4
1	ROLL PIN, 1/8 X 1/2 LG	095-100	5
1	DOWEL PIN, 3/16 X 1/2 LG	095-140	6
1	ROLL PIN, 3/32 X 5/8 LG	095-120	7
2	WASHER, CONCAVE	740-007	8
1	BEARING, THRUST, 5/16 X 5/8	032-003	9
-	-	-	10
1	NUT, NYLOCK, 8-32	-	11
2	WASHER, THRUST, 5/16 X 5/8	032-004	12
1	BLADE, SLITTER, CIRCULAR	475-001	13
1	FLANGED BUSHING, STEEL	040-037	14
1	STRIP, 3/16 X 3/4	050-032	15
1	WASHER, THRUST, 3/16 X 1/2	032-005	16
1	LABEL, WARNING	450-012	17
1	RIVET, FLTHD, 1/8 X 1/4 X 1/4 LG	-	18
2	O-RING	480-030	19
2	SHCS, STAINLESS STEEL 5/16-24 X 3/4	-	20



GREASE I.D. WITH BEARING GREASE LIKE DOW 44. △

E NOTE: REPLACE SUPPLIED BOLTS WITH ITEM 20

TIGHTEN -11- ONTO -15- UNTIL ALL OF -9- IS PILOTED ON -14-. THE -13- AND -14- MUST ROTATE FREELY TOGETHER ON -15-.

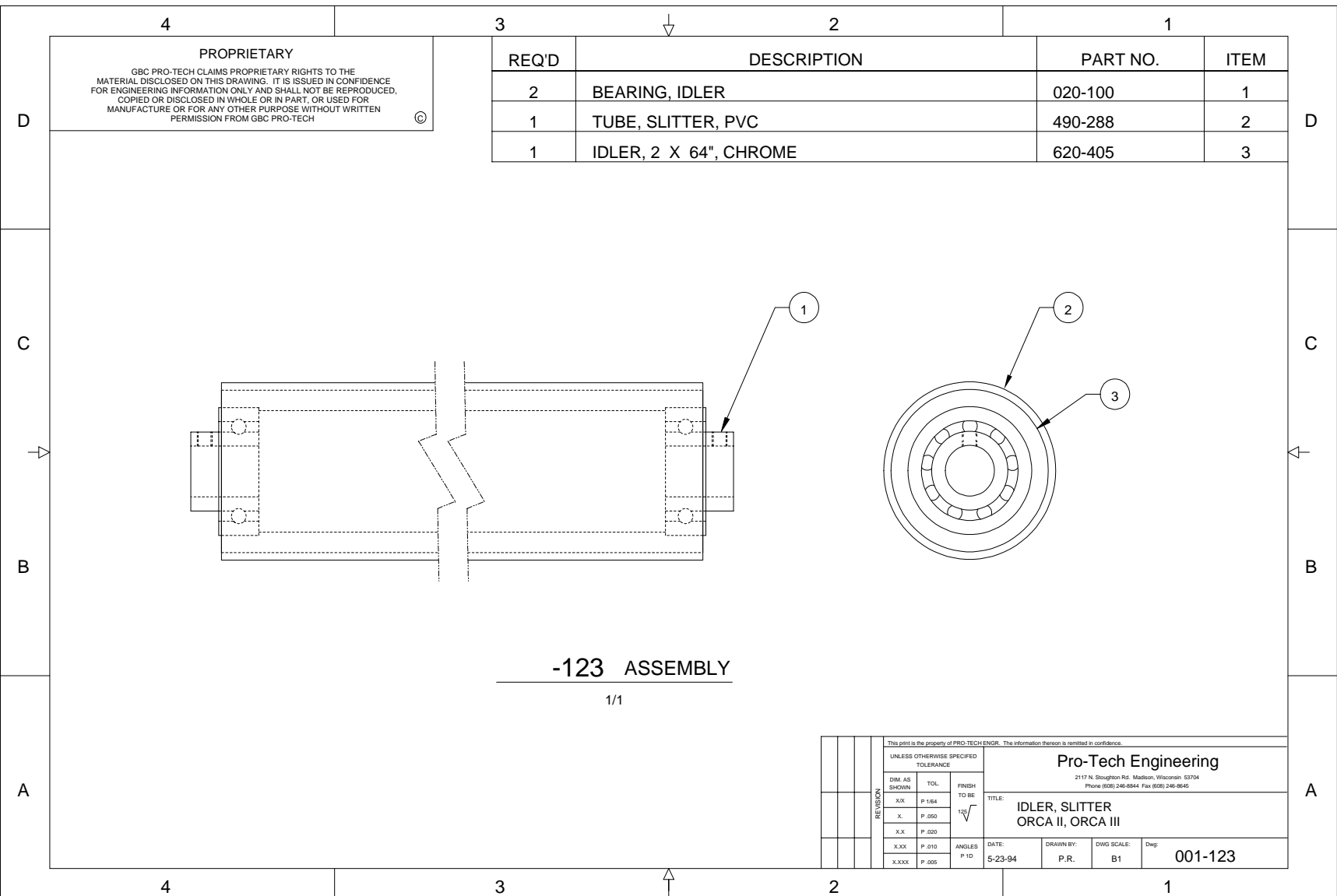
△ BLUE LOCTITE -11- TO -15-.

REV	DATE	BY	CHKD	APP'D	REVISION
G	05/16/94				
F	05/16/94				
E	05/16/94				
D	05/16/94				
C	05/16/94				
B	05/16/94				
A	05/16/94				

UNLESS OTHERWISE SPECIFIED:		PROJ. NO.	
DRG. SCALE	1:1	PROJ. NO.	
DATE	05-16-94	BY	
SCALE	C1	DATE	
DRG. NO.	001-122	SCALE	
DATE	05-16-94	BY	
SCALE	C1	DATE	

Pro-Tech Engineering
2117 N. Slaughter Rd., Madison, Wisconsin
Phone (608) 248-8844 Fax (608) 248-8853

TITLE: SLITTER, INPUT
O2, O3, O1SP



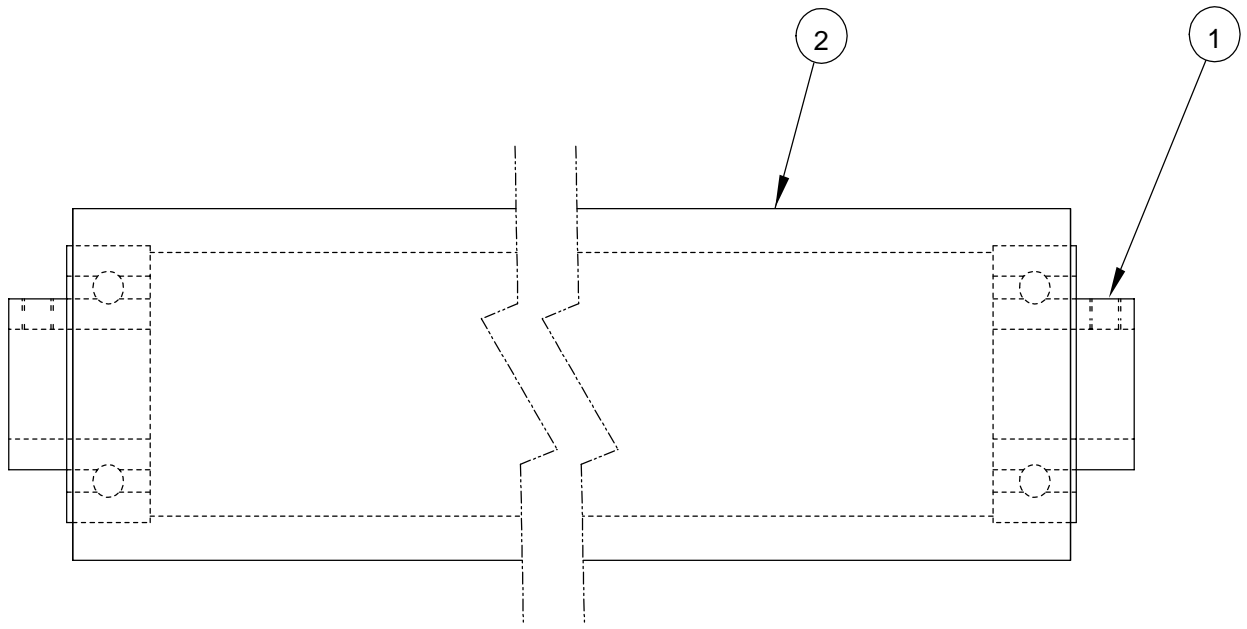
PROPRIETARY
 GBC PRO-TECH CLAIMS PROPRIETARY RIGHTS TO THE MATERIAL DISCLOSED ON THIS DRAWING. IT IS ISSUED IN CONFIDENCE FOR ENGINEERING INFORMATION ONLY AND SHALL NOT BE REPRODUCED, COPIED OR DISCLOSED IN WHOLE OR IN PART, OR USED FOR MANUFACTURE OR FOR ANY OTHER PURPOSE WITHOUT WRITTEN PERMISSION FROM GBC PRO-TECH ©

REQ'D	DESCRIPTION	PART NO.	ITEM
2	BEARING, IDLER	020-100	1
1	TUBE, SLITTER, PVC	490-288	2
1	IDLER, 2 X 64", CHROME	620-405	3

-123 ASSEMBLY
 1/1

UNLESS OTHERWISE SPECIFIED TOLERANCE				This print is the property of PRO-TECH ENGR. The information thereon is omitted in confidence. Pro-Tech Engineering 2117 N. Stoughton Rd., Madison, Wisconsin 53704 Phone (608) 246-8844 Fax (608) 246-8845			
REVISION	DIM. AS SHOWN	TOL.	FINISH TO BE	TITLE: IDLER, SLITTER ORCA II, ORCA III DATE: 5-23-94 DRAWN BY: P.R. DWG SCALE: B1 Dep: 001-123			
	.XX	P .1/64					
	X	P .050					
	.XX	P .020					
	.XXX	P .010	ANGLES P 10				
	.XXXX	P .005					

REQ'D	DESCRIPTION	PART NO.	ITEM
2	BEARING, IDLER	020-100	1
1	IDLER, 2 X 64", CHROME	620-405	2



This print is the property of PRO-TECH ENGR. The information thereon is remitted in confidence.						
UNLESS OTHERWISE SPECIFIED TOLERANCE			Pro-Tech Engineering			
			2117 N. Stoughton Rd. Madison, Wisconsin 53704 Phone (608) 246-8844 Fax (608) 246-8645			
TITLE:			ASSY, IDLER ORCA II, ORCA III			
DATE:		DRAWN BY:		DWG SCALE:		Dwg:
1-10-95		K.L.		A1		001-226
REVISION	DIM. AS SHOWN	TOL.	FINISH TO BE	ANGLES	P 1D	
	X/X	P 1/64	125 √			
	X.	P .050				
	X.X	P .020				
	X.XX	P .010				
	X.XXX	P .005				